

Table A7-1 Flow of Accumulative Processing

Item No.	Procedure Name	Procedure Code	Process Result (Note 1)	Flow and Units of Processing	Pattern
1	Addition of vanning information	VAA		In units of 1 container	1
2	Addition of vanning information (Accumulative Processing)	1VA		In units of 100 Cargo Control Numbers * In the case of containers where 101 or above Export Control Numbers are registered.	
3	Cancellation of vanning information * In the case of collective cancellation in units of Export Control Numbers, etc.	VAC		In units of 1 Cargo Control Number (up to 100 containers)	1
4	Correction of vanning information (Accumulative Processing)	1VV		In units of 1 container	
5	Cancellation of vanning information * In the case of correcting cargo information	VAC		In units of 1 container	1
6	Cancellation of vanning information (Accumulative Processing)	1VC		In units of 100 Cargo Control Numbers * In the case of containers where 101 or above Export Control Numbers are registered.	
7	Correction of vanning information * In the case of correcting cargo information	VAD		In units of 1 Cargo Control Number (up to 100 containers)	1
8	Correction of vanning information (Accumulative Processing)	1VV		In units of 1 container	
9	Correction of vanning information * In the case of correcting cargo information	VAD		In units of 1 container	1
10	Correction of vanning information (Accumulative Processing)	1VD		In units of 100 Cargo Control Numbers * In the case of containers where 101 or above Export Control Numbers are registered.	
11	Register Loading Information (submission of a list of loaded containers/loading)	CLR		In units of vessels/ports	1
12	Register Loading Information (division of messages)	1CB		Container cargo; In units of 300 containers per container manager In-bulk cargo; In units of 300 Cargo Control Numbers	
13	Register Loading Information (Accumulative Processing)	1CL		Container cargo; In units of 1 container In-bulk cargo; In units of 100 Cargo Control Numbers	
14	Register Loading Information (submission of a list of loaded containers)	CLR		In units of vessels/ports	1
15	Register Loading Information (division of messages)	1CB		In units of 300 containers per container manager	
16	Register Loading Information (Accumulative Processing)	1CL		In units of 20 container	
17	Register Loading Information (loading)	CLR		In units of vessels/ports	1
18	Register Loading Information (division of messages) * In the case of other than "Loading completion"	1CB		Container cargo; In units of 300 containers In-bulk cargo; In units of 300 Cargo Control Numbers	
19	Register Loading Information (Accumulative Processing)	1CL		Container cargo; In units of 1 container In-bulk cargo; In units of 100 Cargo Control Numbers	
20	Register Loading Information (loading) * In the case of "Loading completion"	CLR		In units of vessels/ports	1
21	Register Loading Information (Accumulative Processing)	1CL		In units of vessels/ports	
22	Changes to loading information (cancellation of loaded container/loading information)	CLD		In units of container managers	
23	Register Loading Information (division of messages)	1CB		In units of 300 container	1
24	Changes to loading information (Accumulative Processing)	1CD		In units of 1 container	
25	Changes to loading information (cancellation of loaded container information)	CLD		In units of container managers	
26	Register Loading Information (division of messages)	1CB		In units of 300 container	1
27	Changes to loading information (Accumulative Processing)	1CD		In units of 20 container	
28	Changes to loading information (cancellation of loading information)	CLD		In units of vessels/ports	
29	Register Loading Information (division of messages)	1CB		Container cargo; In units of 300 containers In-bulk cargo; In units of 300 Cargo Control Numbers	1
30	Changes to loading information (Accumulative Processing)	1CD		Container cargo; In units of 1 container In-bulk cargo; In units of 100 Cargo Control Numbers	
31	ACL Information Registration	ACL01		In units of loading information	1
32	ACL Information Registration (Accumulative Processing)	1AL		In units of 10 house Booking Numbers	
33	Loading Confirmation Registration	CCL		Container cargo; In units of vessels/ports In-bulk cargo; In units of vessels/ports	1
34	Registration of confirmation of loading (accumulative processing)	1CC		Container cargo; In units of 20 containers In-bulk cargo; In units of 20 Cargo Control Numbers	
35	Call-up for the registration of bulk carry-in confirmation	BIL		In units of carry-in documents or in units of LDRs (in the case of simple processing)	1
36	Carry-in confirmation (Accumulative Processing)	1BL		In units of 16 AWBs (HAWBs)	
37	Registration of carry-out confirmation (by ULD)	EXU		In units of LDRs (ULDs)	1
38	Registration of carry-out confirmation (by ULD) (Accumulative Processing)	1XU		In units of 20 AWBs (HAWBs)	
39	Call-up for the cancellation of carry-out confirmation	EXC		In units of LDRs (ULDs) (when canceling information indicating that registration is made by EXU)	1
40	Cancellation of carry-out confirmation (Accumulative Processing)	1XC		In units of 20 AWBs (HAWBs)	
41	Registration of information about the allocation of loading flights	FLI01		In units of loading flights	1
42	Allocation of loading flights A (division of messages)	1FS		In units of 6 AWBs (HAWBs) In units of 1 ULD	
43	Allocation of loading flights B (Accumulative Processing)	1FU		In units of 6 AWBs (HAWBs)	
44	Correction of information about the allocation of loading flights	FLF01		In units of loading flights	1
45	Allocation of loading flights A (division of messages)	1FS		In units of 6 AWBs (HAWBs) In units of 1 ULD	
46	Allocation of loading flights B (Accumulative Processing)	1FU		In units of 6 AWBs (HAWBs)	
47	Registration of Loading completion (by flight)	CLA01		In units of loading flights	1
48	Loading completion A (division of messages) * In the case of consolidated cargo	1CS		In units of 1 MAWB	
49	Loading completion B (Accumulative Processing)	1CU		In units of 20 HAWBs	
50	Loading completion C (Accumulative Processing)	1FL		In units of 1 MAWB (in the case of Loading completion)	
51	Loading completion D (Accumulative Processing)	1MW		In units of 1 HAWB	
52	Registration of Loading completion (by flight)	CLA01		In units of loading flights	
53	Loading completion A (division of messages) * In the case of other than consolidated cargo	1CS		In units of 20 AWBs In units of 1 ULD	1
54	Loading completion B (Accumulative Processing)	1CU		In units of 20 AWBs	
55	Loading completion C (Accumulative Processing)	1FL		In units of 1 AWB (in the case of Loading completion)	
56	Registration of Loading completion (by AWB)	CLB01		In units of loading flights	1
57	Loading completion A (division of messages) * In the case of consolidated cargo	1CS		In units of 1 MAWB	
58	Loading completion B (Accumulative Processing)	1CU		In units of 20 HAWBs	
59	Loading completion C (Accumulative Processing)	1FL		In units of 1 MAWB (in the case of Loading completion)	
60	Loading completion D (Accumulative Processing)	1MW		In units of 1 HAWB	

Item No.	Procedure Name	Procedure Code	Process Result (Note 1)	Flow and Units of Processing	Pattern
61	Registration of Loading completion (by AWB)	CLB01		In units of loading flights	1
62	Loading completion A (division of messages) * In the case of other than consolidated cargo	1CS		In units of 20 AWBs In units of 1 ULD	
63	Loading completion B (Accumulative Processing)	1CU		In units of 20 AWBs	
64	Loading completion C (Accumulative Processing)	1FL		In units of 1 AWB (in the case of Loading completion)	
65	Registration of forced termination of loading completion	CLF01		In units of loading flights	1
66	Loading completion A (division of messages) * In the case of consolidated cargo	1CS		In units of 1 MAWB	
67	Loading completion B (Accumulative Processing)	1CU		In units of 20 MAWBs	
68	Loading completion C (Accumulative Processing)	1FL		In units of 1 MAWB (in the case of Loading completion)	
69	Loading completion D (Accumulative Processing)	1MW		In units of 1 HAWB	1
70	Registration of forced termination of loading completion	CLF01		In units of loading flights	
71	Loading completion A (division of messages) * In the case of other than consolidated cargo	1CS		In units of 20 AWBs In units of 1 ULD	
72	Loading completion B (Accumulative Processing)	1CU		In units of 20 AWBs	
73	Loading completion C (Accumulative Processing)	1FL		In units of 1 AWB (in the case of Loading completion)	1
74	Inquiry about the inventory status of bonded warehouses (export)	IWH		In units of Bonded Warehouse	
75	Inquiry about the inventory status of bonded warehouses (export) (Accumulative Processing)	1WH		In units of 48 AWBs (HAWBs)	
76	Export declaration	EDC		In units of Export declarations	
77	Export declaration (Automatic startup Processing on carry-in)	1ED	○	In units of Export declarations (when processing Carry-In Confirmation Registration or CY Carry-In Confirmation Registration)	2
78	Export declaration	EDC		In units of Export declarations	2
79	Export declaration (Automatic Invocation Processing during office operating hours)	3ED	○	In units of Export declarations (during office operating hours)	
80	Export declarations of unaccompanied articles	UEC		In units of Export declarations of unaccompanied articles	2
81	Export declaration of unaccompanied articles (automatic startup upon carry-in)	1UE	○	In units of Export declarations of unaccompanied articles (when processing Carry-In Confirmation Registration or CY Carry-In Confirmation Registration)	
82	Export declarations of unaccompanied articles	UEC		In units of Export declarations of unaccompanied articles	2
83	Export declaration of unaccompanied articles (Automatic Invocation Processing during office operating hours)	3UE	○	In units of Export declarations of unaccompanied articles (during office operating hours)	
84	Export declaration	EDC		In units of Export declarations	2
85	Post-carry-in process for export declarations (automatic startup)	1CE	○	In units of Export declarations (when processing Carry-In Confirmation Registration or CY Carry-In Confirmation Registration)	
86	Export declarations of unaccompanied articles	UEC		In units of Export declarations of unaccompanied articles	2
87	Post-carry-in process for export declarations (automatic startup)	1CE	○	In units of Export declarations (when processing Carry-In Confirmation Registration or CY Carry-In Confirmation Registration)	
88	Export manifest clearance declarations	MEC		In units of export manifest clearance declarations	2
89	Post-carry-in process for export declarations (automatic startup)	1CE	○	In units of Export declarations (when processing Carry-In Confirmation Registration or CY Carry-In Confirmation Registration)	
90	Post-carry-in process for export declarations (automatic startup)	1CE		In units of Export declarations, in units of Export declarations of unaccompanied articles, in units of export manifest clearance declarations	2
91	Post-carry-in process for export declarations (automatic startup at the office opening time)	3EW	○	In units of Export declarations, in units of Export declarations of unaccompanied articles, in units of export manifest clearance declarations	
92	Export manifest clearance declarations	MEC		In units of export manifest clearance declarations	2
93	Export manifest clearance declarations (automatic startup upon carry-in)	1ME	○	In units of export manifest clearance declarations (when processing Carry-In Confirmation Registration)	
94	Export manifest clearance declarations	MEC		In units of export manifest clearance declarations	2
95	Export manifest clearance declarations (Automatic Invocation Processing during office operating hours)	3ME	○	In units of export manifest clearance declarations (during office operating hours)	
96	Applications for changes to the content of export permission (bulk change of the port of shipment)	EAM01		In units of 1 MAWB	2
97	Applications for changes to the content of export permission (Accumulative Processing)	1EA	○	In units of Export declarations	
98	Applications for changes to the content of export permission (bulk change of the port of shipment)	EAM01		In units of 1 MAWB	2
99	Applications for changes to the content of export permission for unaccompanied articles (accumulative procedure)	1UA	○	In units of Export declarations of unaccompanied articles	
100	Applications for changes to the content of export permission (bulk change of the port of shipment)	EAM01		In units of 1 MAWB	2
101	Applications for changes to the content of permission of export manifest clearance declarations (accumulative procedure)	1MA	○	In units of export manifest clearance declarations	
102	Manifest Information Registration	MFR		In units of 1 B/L	2
103	Customs Transit Declaration (automatic startup upon carry-in)	1OT	○	In units of 1 B/L (when processing Loading Confirmation Registration)	
104	Manifest Submission	DMF		In units of carriers/ports	1
105	Manifest Submission Information Registration (Accumulative Processing)	1MD		In units of 1 B/L	
106	Manifest Submission (Accumulative Processing)	1MF		In units of 20 B/Ls, in units of 20 containers	
107	Manifest Submission	DMF		In units of carriers/ports	
108	Manifest Submission Information Registration (Accumulative Processing)	1MD		In units of 1 B/L	1
109	Manifest Submission (Accumulative Processing)	1MF		In units of 20 B/Ls, in units of 20 containers	
110	Import declaration before the arrival of cargo (House) (automatic startup of the final declaration)	1MJ		In units of 20 house B/Ls	
111	Arrival Date Registration	PID		In units of vessels/ports	
112	Arrival Date Registration (accumulative processing)	1PD		In units of 20 B/Ls	1
113	Arrival Date Registration (immediately upon arrival) (accumulative processing)	1DM		In units of discharged container information	
114	Discharge Container Information Registration (accumulative processing)	1DC	○	In units of 20 containers	2
115	Arrival Date Registration	PID		In units of vessels/ports	1
116	Arrival Date Registration (accumulative processing)	1PD		In units of 20 B/Ls	
117	Arrival Date Registration (immediately upon arrival) (accumulative processing)	1DM		In units of discharged container information	1
118	Discharge Container Information Registration (automatic startup at the office opening time)	3DC		In units of Carriers (during office operating hours)	
119	Discharge Container Information Registration (accumulative processing)	1DC	○	In units of 20 containers	
120	Discharge confirmation registration(Separate)	PKK		Container cargo, In units of 100 containers In-bulk cargo, In units of 100 B/Ls	

Item No.	Procedure Name	Procedure Code	Process Result (Note 1)	Flow and Units of Processing	Pattern
122	Discharge confirmation registration (blanket registration)	PKI		Container cargo; In units of Carriers/ports In-bulk cargo; In units of carriers/ports	1
123	Discharge confirmation registration (accumulative processing)	1PK02	○	Container cargo; In units of 20 containers, in units of 20 B/Ls In-bulk cargo; In units of 20 B/Ls	
124	Discharge confirmation registration (blanket registration)	PKI		Container cargo; In units of Carriers/ports In-bulk cargo; In units of carriers/ports	1
125	Discharge confirmation registration (accumulative processing)	1PK02	○	Container cargo; In units of 20 containers, in units of 20 B/Ls In-bulk cargo; In units of 20 B/Ls	
126	Discharge Container Information Registration (automatic startup at the office opening time)	3DC		In units of Carriers (during office operating hours)	1 2
127	Discharge Container Information Registration (accumulative processing)	1DC	○	In units of 20 containers	
128	Discharge Container Information Registration (submission)	DCL02		In units of Carriers per container; in units of 1500 containers	1
129	Discharge Container Information Registration (accumulative processing)	1DC	○	In units of 20 containers	
130	Customs Transit Declaration	OLC/ OLC20		In units of customs transit declarations, in units of 5 B/Ls	2
131	Customs Transit Declaration (automatic startup upon carry-in)	1OT	○	In units of customs transit declarations (when processing Discharge Confirmation Registration or Carry-In Confirmation Registration)	
132	Customs Transit Declaration	OLC/ OLC20		In units of 5 B/Ls	2
133	Customs Transit Declaration (automatic startup at the office opening time)	3OT	○	In units of 5 B/Ls (during office operating hours)	
134	Carry-in confirmation registration (General Customs Transit cargo)	BIA		Collective registration; In units of customs transits, individual transits, Container Numbers, master B/Ls, import declaration numbers Individual registration; In units of 20 B/L Numbers	1 2
135	Carry-in confirmation registration (General Customs Transit cargo) (accumulative processing)	1BA	○	In units of 1 ocean B/L (Note 2)	
136	House B/L Cargo break-bulk Confirmation Registration (accumulative processing)	1BB	○	In units of 10 house B/Ls (in the case of consolidated cargo)	
137	Registration of confirmation of consolidated cargo	CTS		Collective registration; In units of master B/Ls Individual registration; In units of 20 Cargo Control Numbers	1 2
138	Carry-in confirmation registration (General Customs Transit cargo) (accumulative processing)	1BA	○	In units of 1 ocean B/L (Note 2)	
139	House B/L Cargo break-bulk Confirmation Registration (accumulative processing)	1BB	○	In units of 10 house B/Ls (in the case of consolidated cargo)	
140	Confirmation of CY carry-in outside the system (bulk carry-in)	CYE		In units of Carriers/ports	1
141	Confirmation of CY carry-in outside the system (bulk carry-in) (accumulative processing)	1CY		In units of 20 containers, in units of 20 B/Ls	
142	House B/L Cargo Information Registration	NVC01/NVC02		In units of master B/Ls	1
143	Import declaration before the arrival of cargo (House) (automatic startup of the final declaration)	1MJ		In units of 20 house B/Ls	
144	House B/L Cargo Information Registration	NVC01		In units of master B/Ls	2
145	Customs Transit Declaration (automatic startup upon carry-in)	1OT	○	In units of house B/Ls (when processing Carry-In Confirmation Registration)	
146	House B/L Cargo Information Registration	NVC01		In units of master B/Ls	
147	Carry-in confirmation registration (General Customs Transit cargo) (accumulative processing)	1BA	○	In units of 1 ocean B/L (Note 2)	1
148	House B/L Cargo break-bulk Confirmation Registration (accumulative processing)	1BB	○	In units of 10 house B/Ls (in the case of consolidated cargo)	
149	Customs Transit Arrival Confirmation Not Covered by the System	SAT		In units of customs transit declarations, in units of B/L Numbers	1
150	Carry-in confirmation registration (General Customs Transit cargo) (accumulative processing)	1BA	○	In units of 1 ocean B/L (Note 2)	
151	House B/L Cargo break-bulk Confirmation Registration (accumulative processing)	1BB	○	In units of 10 house B/Ls (in the case of consolidated cargo)	
152	Registration of free time information	FTR		In units of 200 containers or in units of 200 B/Ls	1
153	Registration of free time information (accumulative processing)	1FT		In units of 20 containers or in units of 20 B/Ls	
154	Departure Time Registration	ATD		In units of vessel information	1
155	Departure time registration (accumulative processing)	1AR		In units of 20 B/Ls	
156	Application for Cargo Discharge Permission	DNC		In units of vessel information	1
157	Application for Cargo Discharge Permission (accumulative processing)	1DN		In units of 20 B/Ls	
158	Manifest Information Registration (Blanket)	MFI		In units of vessel information	1
159	Manifest Information Registration (Blanket)(Accumulative Processing)	1MR		In units of 1 B/L	
160	Examination completion of Application for Cargo Discharge Permission	CDE01		In units of Application for Cargo Discharge Permission	1
161	Application for Cargo Discharge Permission (accumulative processing)	1DN		In units of 20 B/Ls	
162	Update Registered Vessel Information for Advance Filing	CMV		In units of vessel information	1
163	Update Registered Vessel Information for Advance Filing (Accumulative processing)	1CM		In units of 20 B/Ls	
164	Update Manifest Information (Collective Change of CY)	CMC		In units of vessel information	1
165	Update Manifest Information (Collective Change of CY) (accumulative processing)	1MC		In units of 20 B/Ls or in units of 20 containers	
166	Registration of AWB preliminary information	AAW		In units of arrived flights	2
167	Automatic startup of final declarations of HAWB cargo 1	1HA01		In units of 1 MAWB	
168	Automatic startup of final declarations of HAWB cargo 2	1HA02		In units of 40 HAWBs	
169	Registration of AWB information (import)	ACH		In units of arrived flights	2
170	Automatic startup of final declarations of HAWB cargo 1	1HA01		In units of 1 MAWB	
171	Automatic startup of final declarations of HAWB cargo 2	1HA02		In units of 40 HAWBs	
172	Registration of information about cargo confirmation	PKG		In units of arrived flights	2
173	Customs Transit Declaration (accumulative processing)	1OL		In units of 1 AWBs	
174	Correction of AWB information	CAW		In units of arrived flights	2
175	Automatic startup of final declarations of HAWB cargo 1	1HA01		In units of 1 MAWB	
176	Automatic startup of final declarations of HAWB cargo 2	1HA02		In units of 40 HAWBs	
177	Registration of confirmation of carry-in (bonded transportations not subject to the system)	OIN		In units of arrived flights	2
178	Automatic startup of final declarations of HAWB cargo 1	1HA01		In units of 1 MAWB	
179	Automatic startup of final declarations of HAWB cargo 2	1HA02		In units of 40 HAWBs	

Item No.	Procedure Name	Procedure Code	Process Result (Note 1)	Flow and Units of Processing	Pattern
180	Customs Transit Arrival Confirmation Not Covered by the System	CAT		In units of customs transit declarations, in units of AWB Numbers	1
181	Customs Transit Arrival Confirmation Not Covered by the System (Accumulative Processing)	1CA		In units of 18 AWBs (HAWBs) in 1 customs transit declaration	
182	Registration of cargo shift information	KAM01		In units of arrived flights	2
183	Automatic startup of final declarations of HAWB cargo 1	1HA01		In units of 1 MAWB	
184	Automatic startup of final declarations of HAWB cargo 2	1HA02		In units of 40 HAWBs	2
185	Registration of confirmation of CY carry-out (general)	OUT		In units of arrived flights	
186	Automatic startup of final declarations of HAWB cargo 1	1HA01		In units of 1 MAWB	2
187	Automatic startup of final declarations of HAWB cargo 2	1HA02		In units of 40 HAWBs	
188	Inquiry about the inventory status of bonded warehouses (import)	IWI		In units of Bonded Warehouse	1
189	Inquiry about the inventory status of bonded warehouses (import) (accumulative processing)	1IW		In units of 24 AWBs (HAWBs)	
190	Registration of items on single-window import declarations	SWA		In units of registrations of single window import declarations, etc.	2
191	Registration of items on the report concerning the import of foods (Automatic Invocation Processing)	1FA	○	In units of notification acceptance numbers	
192	Import declaration	IDC		In units of import declarations, etc.	2
193	Import declaration (automatic startup upon carry-in)	1DA	○	In units of import declarations, etc. (when processing Discharge Confirmation Registration or Carry-In Confirmation Registration)	
194	Import declaration	IDC		In units of import declarations, etc.	2
195	Import declaration (automatic startup of the final declaration)	1ID	○	In units of import declarations, etc. (when processing Discharge Confirmation Registration, Carry-In Confirmation Registration, or Arrival Date Registration, or matching)	
196	Import declaration	IDC		In units of import declarations, etc.	2
197	Import declaration (automatic startup at the office opening time)	3ID	○	In units of import declarations, etc. (during office operating hours)	
198	Import declaration	IDC		In units of import declarations, etc.	2
199	Removal of the pending status (automatic startup)	1CW01		In units of import declarations, etc. (linked with procedures of other prefectures)	
200	Removal of the pending status (automatic startup at the office opening time)	3CW		In units of import declarations, etc. (during office operating hours)	2
201	Single-window import declarations	SWC		In units of single window import declarations, etc.	
202	Report concerning the import of foods (Automatic Invocation Processing)	1FC	○	In units of notification acceptance numbers	2
203	Import declarations of shipment (carrying out of a comprehensive bonded area) of petroleum products	MWC		In units of import declarations of petroleum products, etc. from integrated area consumption	
204	Import declarations of shipment (carrying out of a comprehensive bonded area) of petroleum products (automatic startup at the office opening time)	3MW	○	In units of import declarations of petroleum products, etc. (from Integrated Area Consumption) (during office operating hours)	2
205	Import declaration examination completion	CEA		In units of import declarations, etc. (on BP approval)	
206	Completion of screening of import declarations (automatic startup at the office opening time)	3CE	○	In units of import declarations, etc. (during office operating hours)	2
207	Import manifest clearance declarations	MIC		In units of import manifest clearance declarations	
208	Import manifest clearance declarations (automatic startup of the final declaration)	1MI	○	In units of import manifest clearance declarations (when processing Carry-In Confirmation Registration or Arrival Date Registration, or matching)	2
209	Import manifest clearance declarations	MIC		In units of import manifest clearance declarations	
210	Import manifest clearance declarations (automatic startup at the office opening time)	3MI	○	In units of import manifest clearance declarations (during office operating hours)	2
211	Simplified import declaration of sea cargo	SDC		In units of sea simplified import declarations	
212	Simplified import declaration of sea cargo (automatic invocation of formal declaration)	1SD	○	In units of sea simplified import declarations (when processing Carry-In Confirmation Registration)	2
213	Simplified import declaration of sea cargo	SDC		In units of sea simplified import declarations	
214	Simplified import declaration of sea cargo (automatic invocation during office operating hours)	3SD	○	In units of sea simplified import declarations (during office operating hours)	2
215	Completion of screening of written collateral offers	CTT		In units of security registration numbers	
216	Removal of the pending status due to collaterals (automatic startup)	1SR	○	In units of import declarations, etc.	2
217	Completion of screening of written collateral offers	CTT		In units of security registration numbers	
218	Removal of the pending status due to collaterals (automatic startup)	1SR	○	In units of import declarations, etc.	2
219	Removal of the pending status due to collaterals (automatic startup at the office opening time)	3SR	○	In units of import declarations, etc.	
220	Security Registration	SER		In units of security registration numbers	2
221	Removal of the pending status due to collaterals (automatic startup)	1SR	○	In units of import declarations, etc.	
222	Security Registration	SER		In units of security registration numbers	2
223	Removal of the pending status due to collaterals (automatic startup)	1SR	○	In units of import declarations, etc.	
224	Removal of the pending status due to collaterals (automatic startup at the office opening time)	3SR	○	In units of import declarations, etc.	2
225	MPN negation	MP2		In units of Payment Numbers	
226	MPN negation (automatic startup at the office opening time)	3MP		In units of Payment Numbers (during office operating hours)	2
227	Application for Examination of Imported Animal Products	ILC		In units of applications	
228	Application for Examination of Imported Animal Products (automatic invocation of application after Arrival)	1IL		In units of applications (when processing Discharge Confirmation Registration or Carry-In Confirmation Registration)	2
229	Applications for payment of general application fees	RPC		In units of applications	
230	Tax amount registration (automatic invocation)	1SK		In units of applications	1
231	Registration of Payment	RCL01		User, schedule for payment	
232	Payment registration (automatic invocation of payment registration)	1RC		In units of Customs Station office, Lump-Sum Payment Slip Number	1
233	Registration of confirmation of CY carry-out	CYO		for Each Container	
234	Registration of confirmation of CY carry-out (accumulative processing)	1CO		In units of 100 Cargo Control Numbers * In the case of containers where 101 or above Export Control Numbers are registered.	1
235	Registration of confirmation of CY carry-in	CYA		for Each Container	
236	Registration of confirmation of CY carry-in (Accumulative Processing)	1TA		In units of 100 Cargo Control Numbers * In the case of containers where 101 or above Export Control Numbers are registered.	1
237	Correction of CY carry-in information	CYC		for Each Container	
238	Correction of CY carry-in information (Accumulative Processing)	1TC		In units of 100 Cargo Control Numbers * In the case of containers where 101 or above Export Control Numbers are registered.	1
239	Registration of the cargo status	CCX		for Each Container	
240	Registration of the cargo status (accumulative processing)	1CX		In units of 100 Cargo Control Numbers * In the case of containers where 101 or above Export Control Numbers are registered.	1

Item No.	Procedure Name	Procedure Code	Process Result (Note 1)	Flow and Units of Processing	Pattern
241	Coastal Vessel Feeder Transport Loading Registration	CYL		Coastal vessel unit (Vessel Code + Vessel Name + Voyage Number + loading port CY + unloading port CY)	1
242	Coastal Vessel Feeder Transport Loading Registration (Accumulative Processing)	1LC		↓ for Each Container	
243	Coastal Vessel Feeder Transport Loading Registration (Accumulative Processing)	1LC		↓ In units of 100 Cargo Control Numbers * In the case of containers where 101 or above Export Control Numbers are registered.	
244	Coastal Vessel Feeder Transport Landing Cargo call-up	CYU11		Coastal vessel unit (Vessel Code + Vessel Name + Voyage Number + unloading CY)	1
245	Coastal Vessel Feeder Transport Landing Cargo Registration (Accumulative Processing)	1UC		↓ for Each Container	
246	Coastal Vessel Feeder Transport Landing Cargo Registration (Accumulative Processing)	1UC		↓ In units of 100 Cargo Control Numbers * In the case of containers where 101 or above Export Control Numbers are registered.	
247	Coastal Vessel Feeder Transport Landing Cargo Registration	CYU		Coastal vessel unit (Vessel Code + Vessel Name + Voyage Number + unloading CY)	1
248	Coastal Vessel Feeder Transport Landing Cargo Registration (Accumulative Processing)	1UC		↓ for Each Container	
249	Coastal Vessel Feeder Transport Landing Cargo Registration (Accumulative Processing)	1UC		↓ In units of 100 Cargo Control Numbers * In the case of containers where 101 or above Export Control Numbers are registered.	

(Note 1) For those with O in the Process Result column, the Process Results are output for each child procedure.
(The Procedure Code of the child procedure is set to the procedure code in Output Common Fields)

(Note 2) Process Result Output (in units of processing) is output in units of 1 ocean B/L.
(Example: When this procedure is processed in units of customs transit declarations (3 B/Ls for 1 declaration),
3 Process Result Output (in units of processing) are output.)

Table A7-1 Flow of Accumulative Processing (for Delayed Batch Procedure)

For delayed batch procedure, target as-needed processing (batch processing) is invoked by registering request information using online procedures in the first row of the following table, and Accumulative Processing in the second row is invoked after the completion of the as-needed processing (batch processing). See "Table A7-2 List of Accumulative Processing Procedures (Delayed Procedures) (Automatic Invocation Processing [Pattern 2])" for as-needed processing (batch processing) invoked.

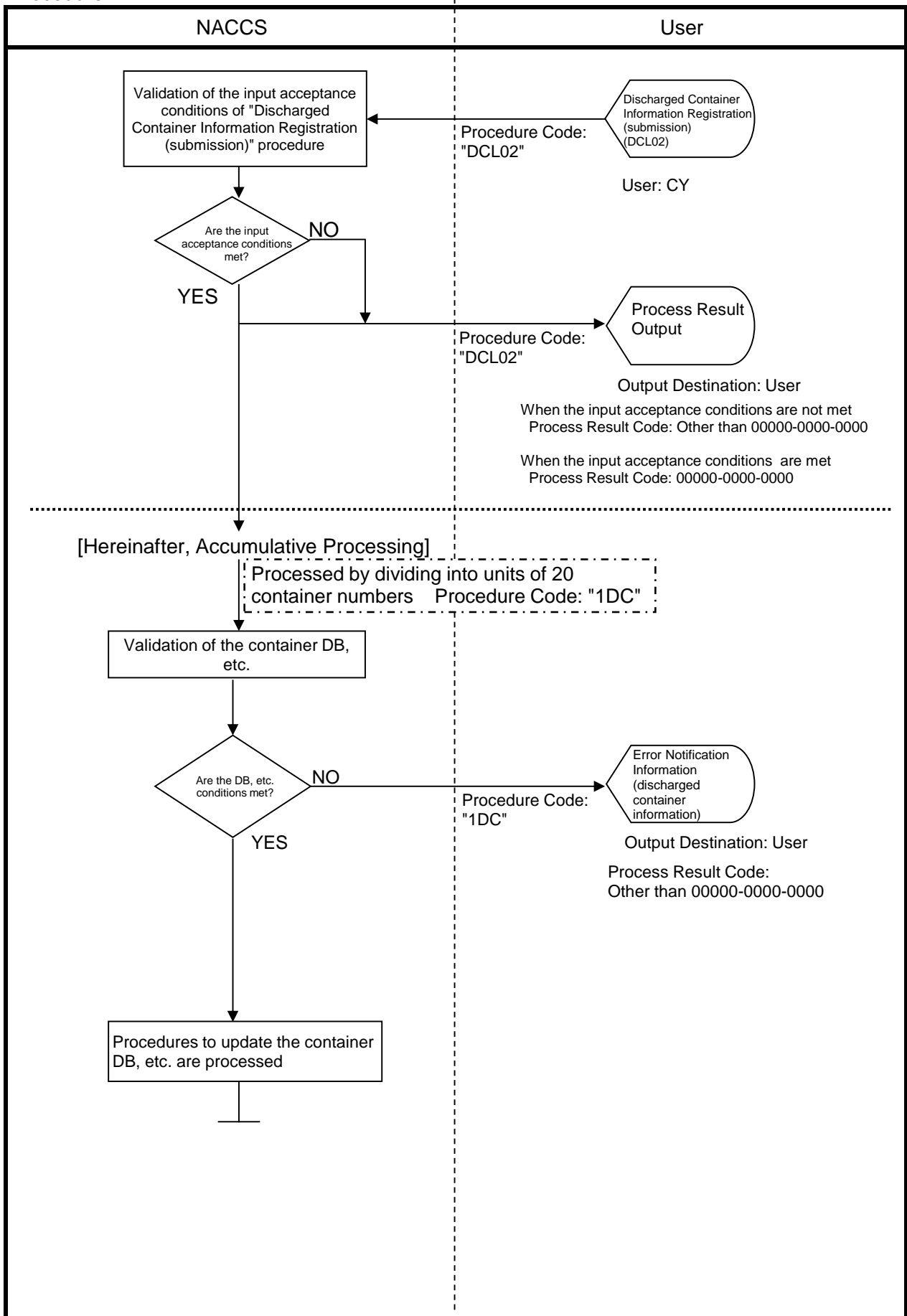
Item No.	Procedure Name	Procedure Code	Process Result (Note 1)	Flow and Units of Processing	Pattern
1	Call-up for information about the initial import declaration (import declarations of warehousing cargo release)	DLI01		In units of serial no. of receipt	2
2	Call-up for information about the initial import declaration (import declarations of warehousing cargo release) (processing result notification on an as-needed basis) (accumulative processing)	1DI01	○	In units of serial no. of receipt (on completion of as-needed processing)	
3	Call-up for information about the initial import declaration (corrected declaration)	DLI02		In units of serial no. of receipt	2
4	Call-up for information about the initial import declaration (corrected declarations) (processing result notification on an as-needed basis) (accumulative processing)	1DI02	○	In units of serial no. of receipt (on completion of as-needed processing)	
5	Call-up for information about the initial import declaration (requests for correction of Customs duties, etc.)	DLI03		In units of serial no. of receipt	2
6	Call-up for information about the initial import declaration (requests for correction of Customs duties, etc.) (processing result notification on an as-needed basis) (accumulative processing)	1DI03	○	In units of serial no. of receipt (on completion of as-needed processing)	
7	Registration of request information related to description data for lump-sum payment (for civilian use) and changes to such information	DLS03		In units of serial no. of receipt	2
8	Registration of request information related to description data for lump-sum payment (for civilian use) and changes to such information (processing result notification on an as-needed basis) (accumulative processing)	1DS03	○	In units of serial no. of receipt (on completion of as-needed processing)	
9	Registration of re-output request information for bond statistic reports and changes to such information	DLH01		In units of serial no. of receipt	2
10	Registration of re-output request information for information about bond statistic reports and changes to such information (processing result notification on an as-needed basis) (accumulative processing)	1DH01	○	In units of serial no. of receipt (on completion of as-needed processing)	
11	Call-up for application for issuance of automobile customs clearance certificate	MTB		In units of serial no. of receipt	2
12	Call-up for application for issuance of automobile customs clearance certificate (processing result notification on an as-needed basis) (accumulative processing)	1MB01	○	In units of serial no. of receipt (on completion of as-needed processing)	

(Note 1) For those with O in the Process Result column, the Process Results are output for each child procedure.
(The Procedure Code of the child procedure is set to the procedure code in Output Common Fields.)

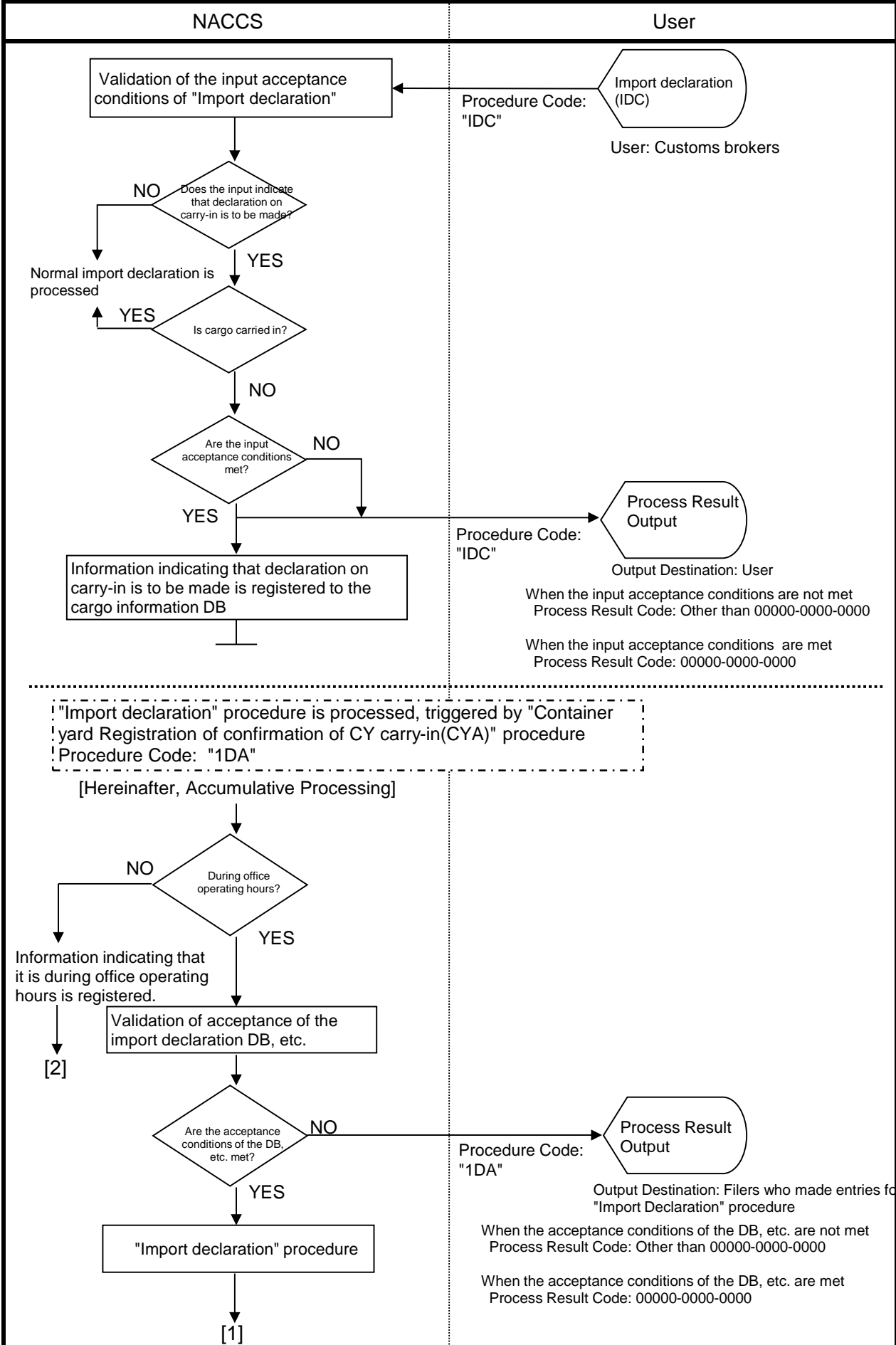
Table A7-1 Flow of Accumulative Processing - For References 1, 2, 3, and 4

(For Reference 1/Sea)

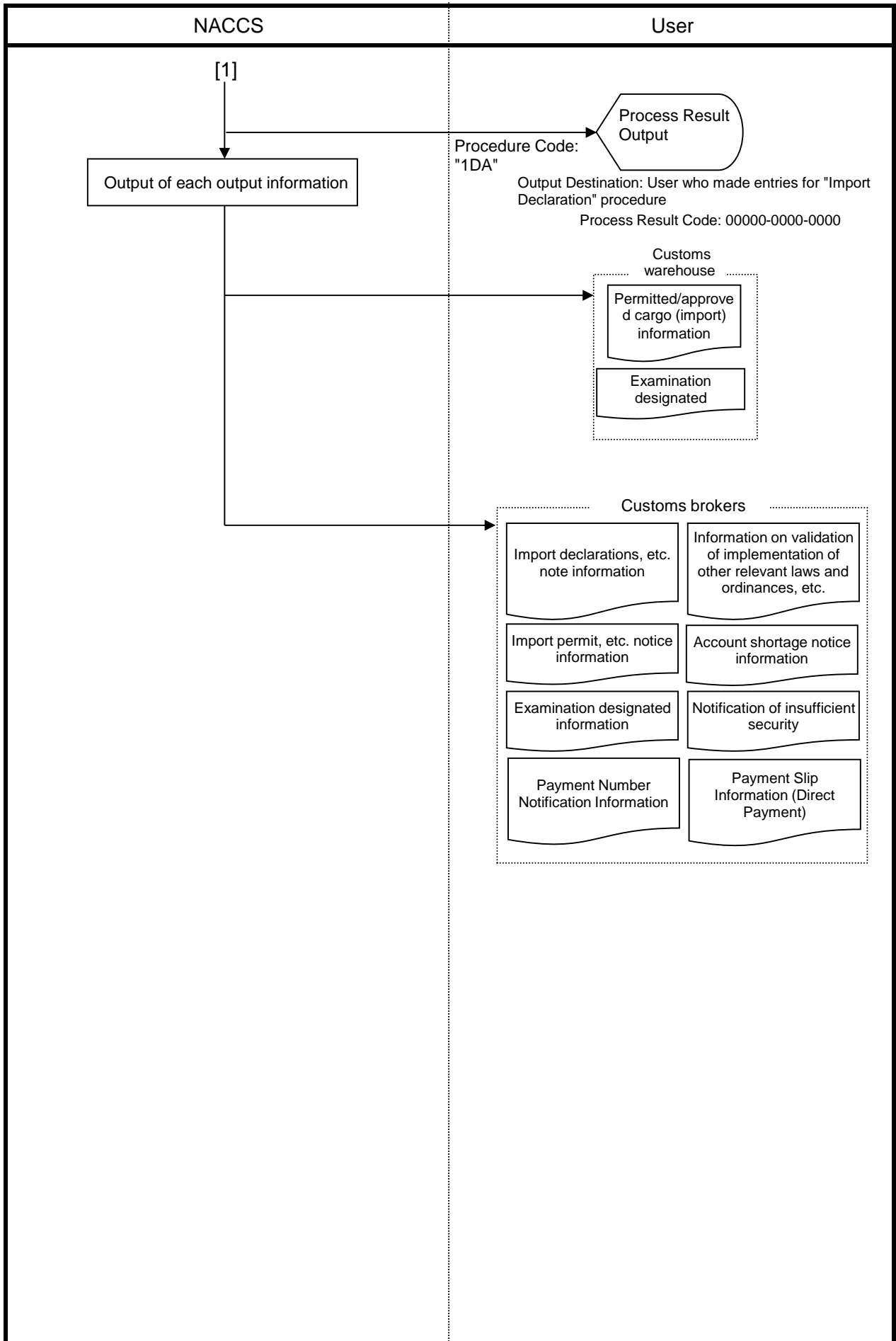
Flow Diagram of Processing "Discharged Container Information Registration (Submission)" Procedure



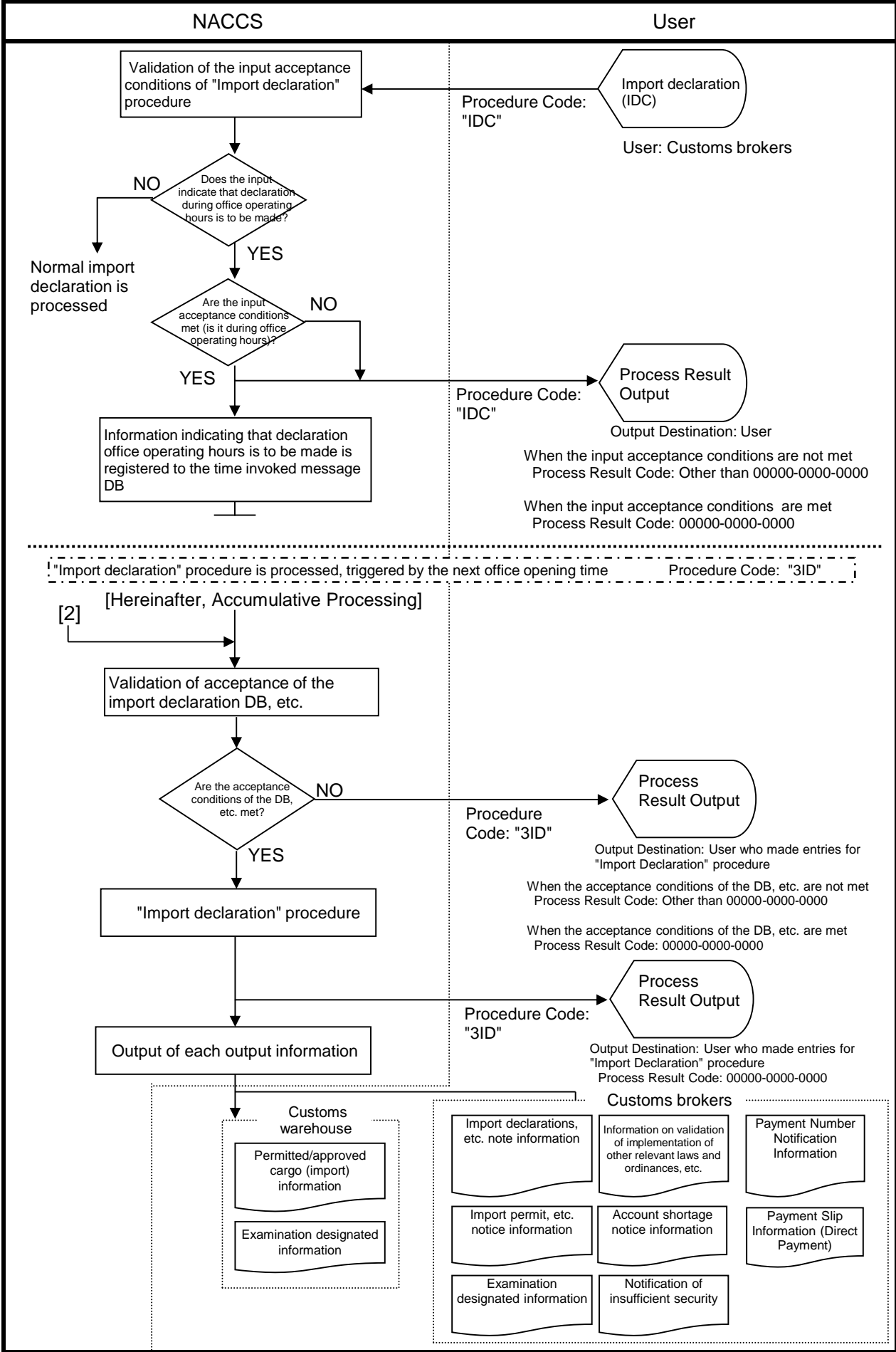
Flow Diagram of Processing "Import declaration" Procedure (Declaration on Carry-In)







Flow Diagram of Processing "Import declaration" Procedure (Declaration During Office Operating Hours)



Flow Diagram of Processing "Collective Payment Description Data Related Request Information (for Private Use) Registration/Change" Procedure

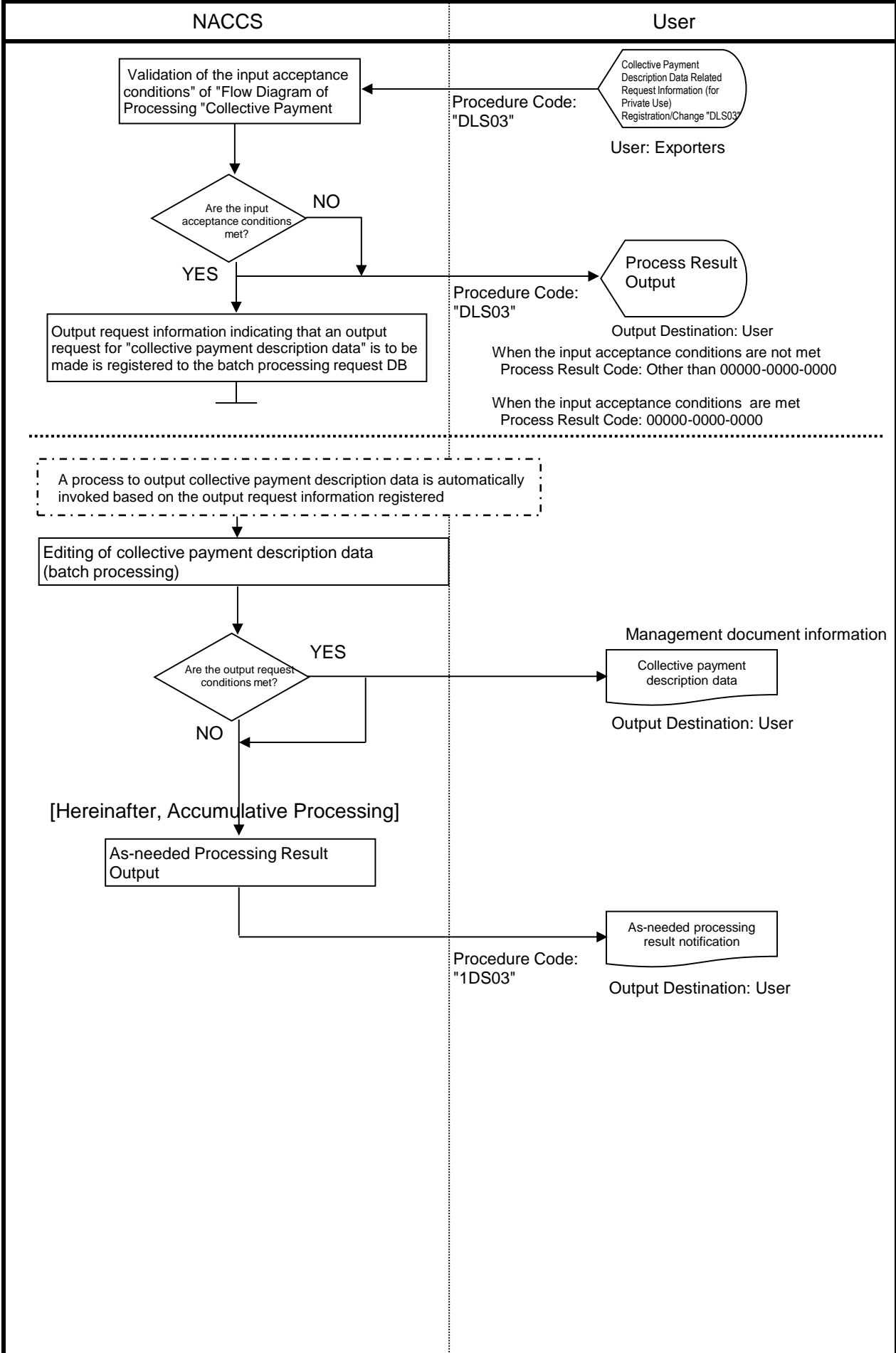
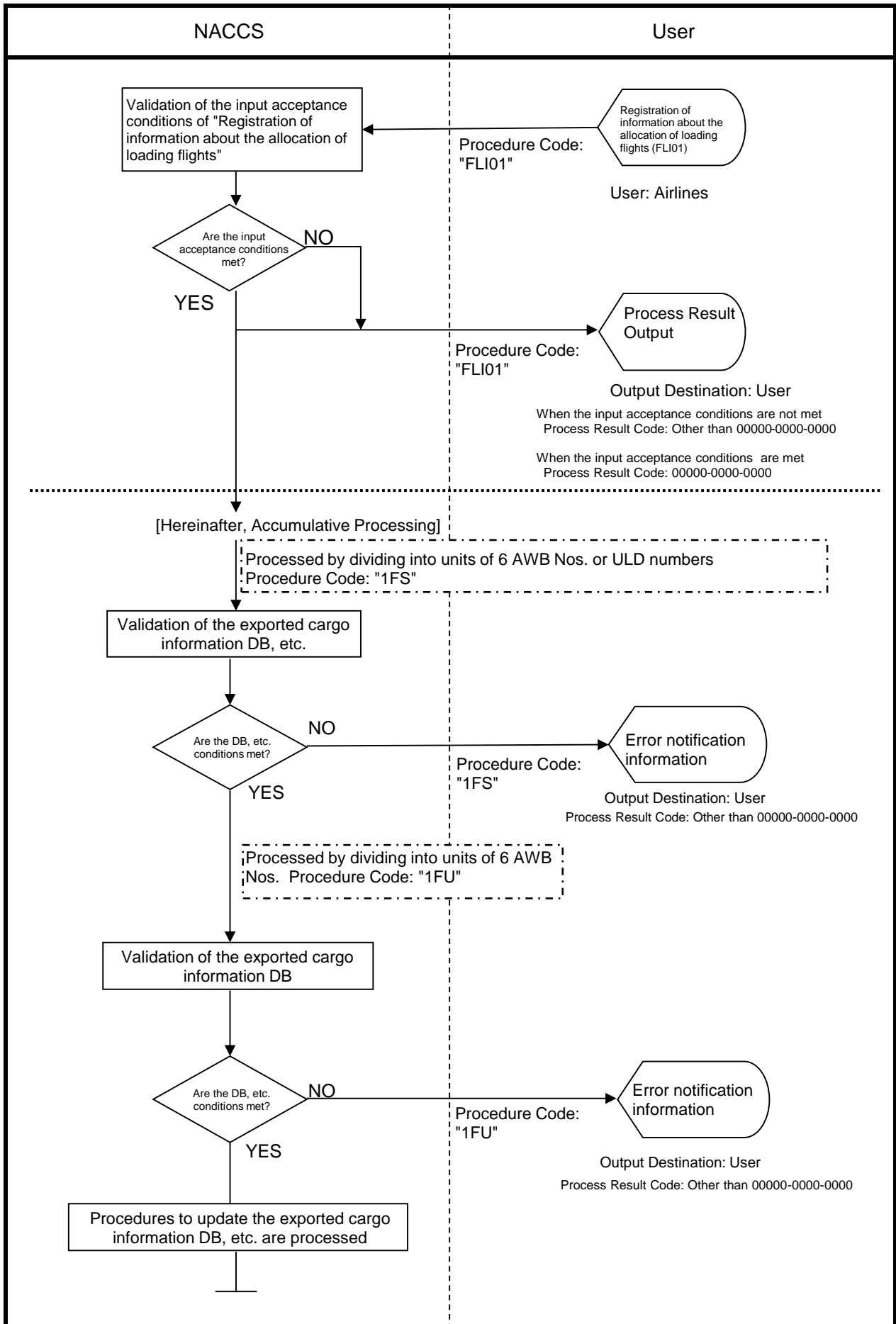


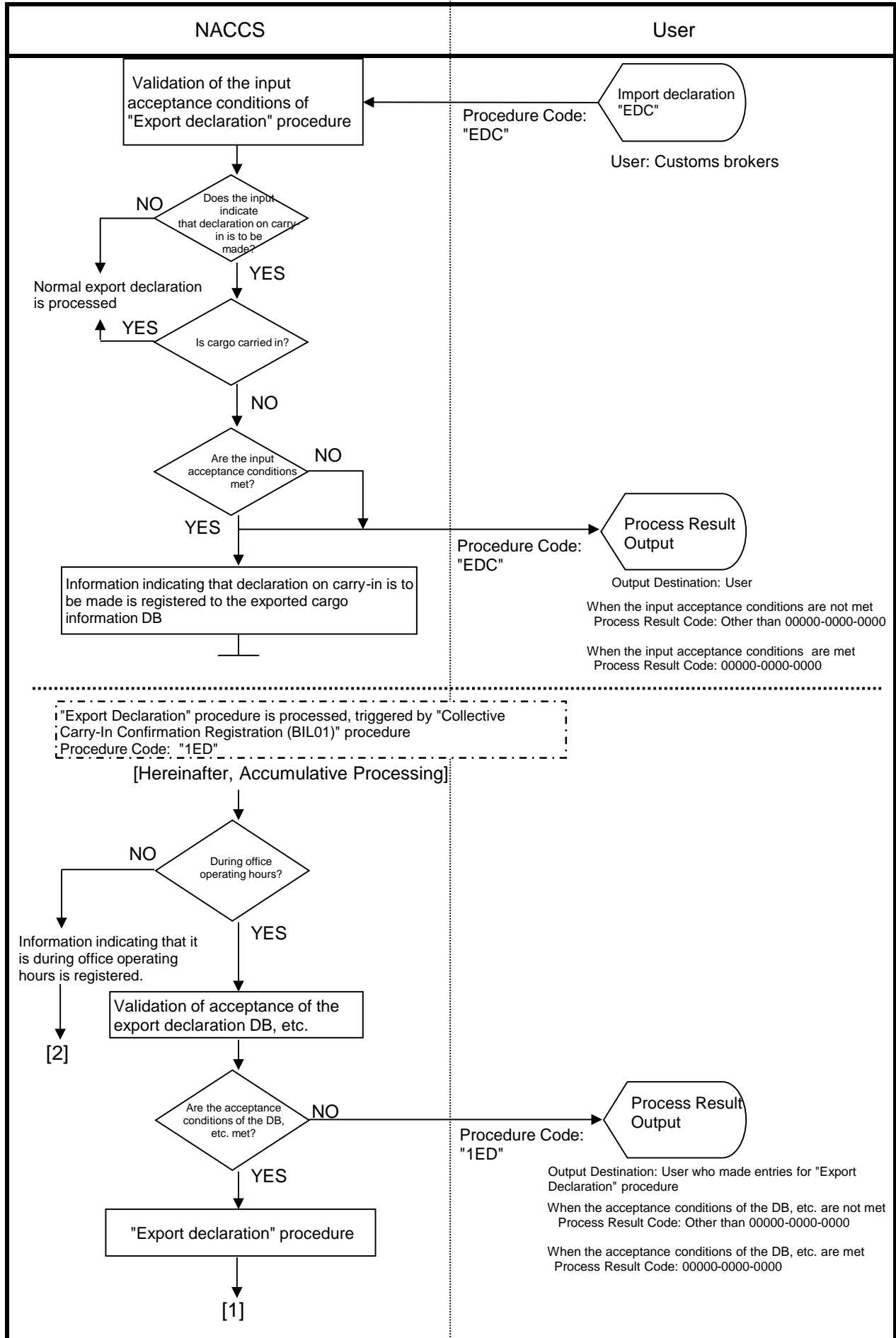
Table A7-1 Flow of Accumulative Processing - For References 1, 2, 3, and 4

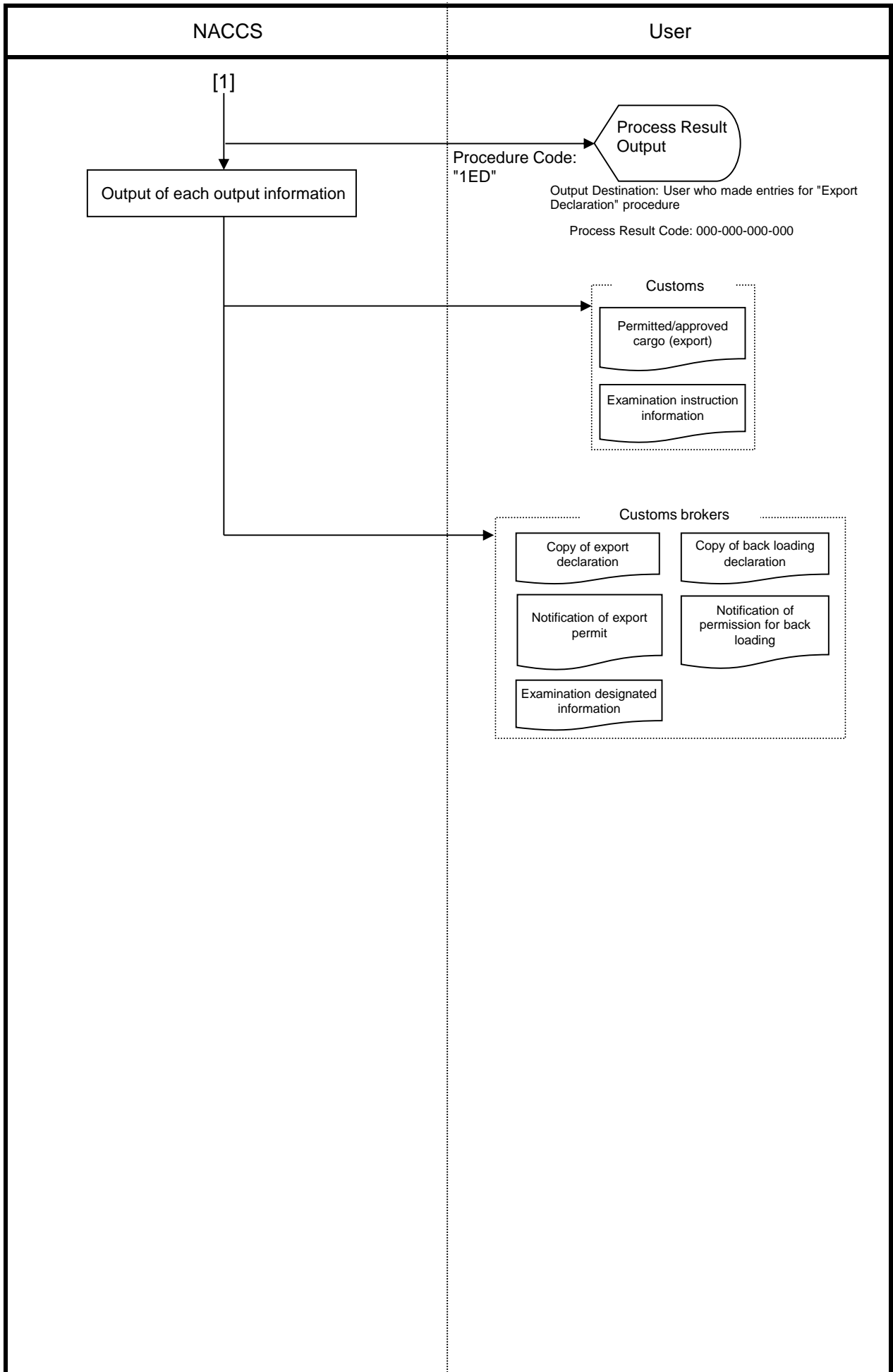
(For Reference 1/Air)

Flow Diagram of Processing "Registration of information about the allocation of loading flights" Proc

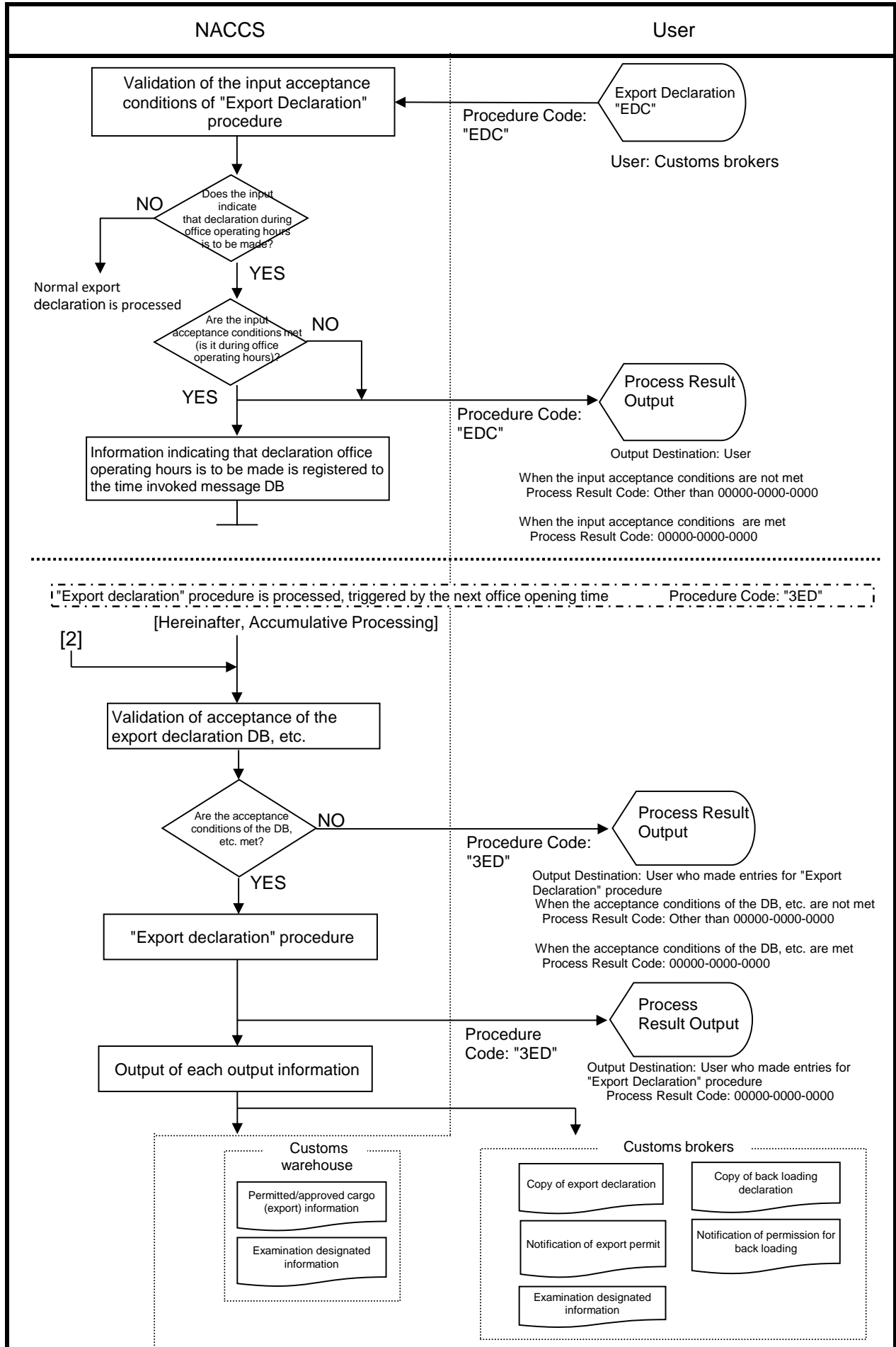


Flow Diagram of Processing "Export Declaration" Procedure (Declaration on Carry-In)





Flow Diagram of Processing "Export declaration" Procedure (Declaration During Office Operating Hours)



Flow Diagram of Processing "Registration of request information related to description data for lump-sum payment (for civilian use) and changes to such information" Procedure

