

## 6.2 Procedures for Retrieving Management Document Information (Using the user's system)

### 6.2.1 Communication Specification

As the communication protocol for retrieving Management Document Information in NACCS, TCP/IP is used for the network transport layer and HTTP for the upper layer. When retrieving Management Document Information from the user's systems connected to NACCS by Interactive Processing Mode (netAPI), see "4.5 Interactive Processing Mode (netAPI)".

#### (1) Specification for Sending/Receiving HTTP

(A) HTTP Request/Response

Table 6.2.1 shows HTTP request methods that can be used when sending to NACCS Center server in Management Document Information retrieval.

Table 6.2.1 Methods Used for Retrieving Management Document Information

Item No.	Method	Outline	Response of the Management Document Information retrieval server in NACCS Center (normal response)
1	POST	Make a Process Request to the Management Document Information retrieval server in NACCS Center and obtain the results. In this specification, a Process Request Message of 6.2.1 (1) (B) also exists, but in either case a Process Request is made using the POST method.	As a normal response, 200 and the Process Results are returned.

(Note) The HTTP request method used in this specification is the only Post method.

(B) Types of Process Request Messages

In Management Document Information retrieval, Process Request Messages shown in Table 6.2.2 exist in user system and Management Document Information retrieval server in NACCS Center. For each Process Request Message, a corresponding Process Result Message exists and is sent to user system as a response to the HTTP request.

Table 6.2.2 Types of Process Request Messages

Item No.	Message type	Description
1	Management Document Information List Request	Obtain a list of Management Document Information stored in the Management Document Information retrieval server in NACCS Center.
2	Management Document Information Retrieval Request	Retrieve Management Document Information stored in the Management Document Information retrieval server in NACCS Center.
3	Management Document Information Re-retrieval Request	Re-retrieve Management Document Information stored in the Management Document Information retrieval server in NACCS Center.

## (2) Sequence of Management Document Information Retrieval

### (A) Procedure Sequence

Figure 6.2.1 shows the sequence of retrieving Management Document Information from user system, and Figure 6.2.2 shows the sequence of re-retrieving Management Document Information.

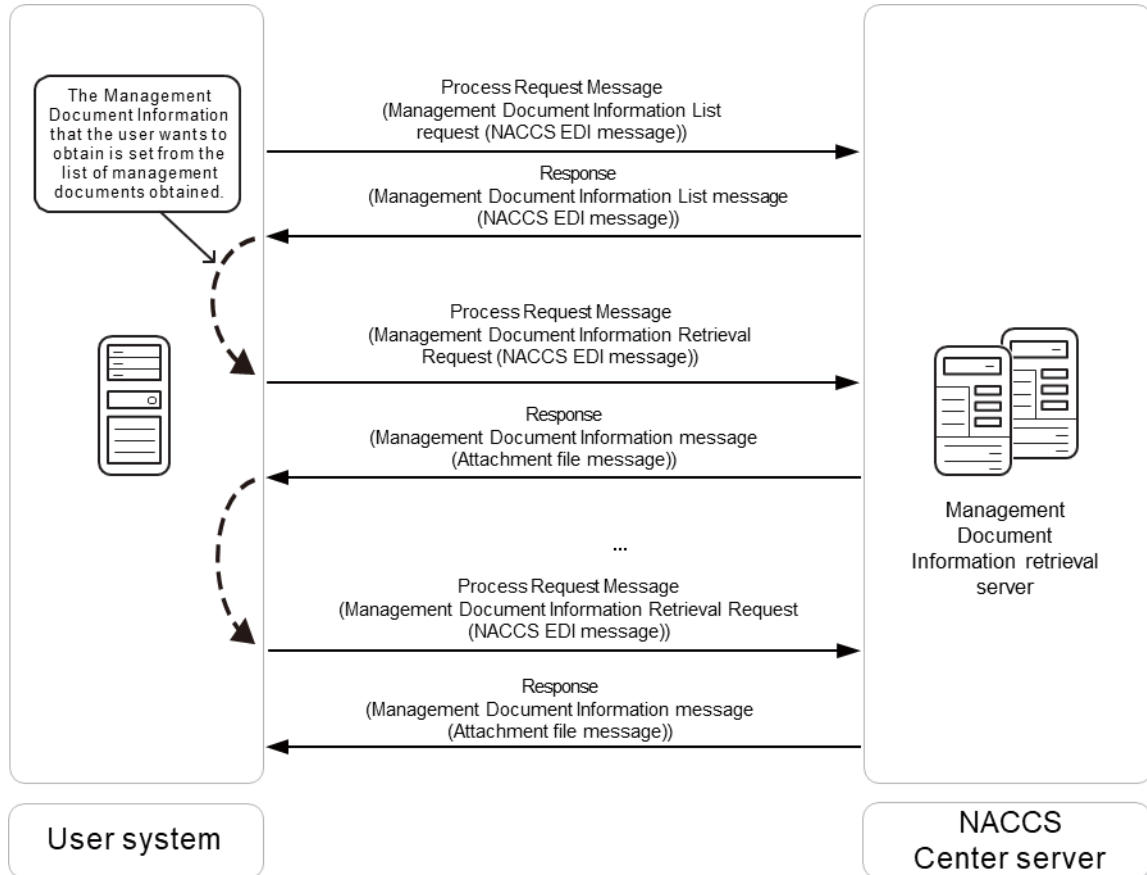


Figure 6.2.1 Sequence of Management Document Information Retrieval

- 1) The user system sends a request message for retrieving a list of Management Document Information to the Management Document Information retrieval server.
- 2) The Management Document Information retrieval server receives a request from user system and obtains the names and sizes of Management Document Information files.
- 3) The Management Document Information retrieval server returns the search results to user system.
- 4) From the Management Document Information List obtained, user system sets the Management Document Information to retrieve.
- 5) Based on the request from user system [4], a Management Document Information Retrieval Request message is sent to the Management Document Information retrieval server.
- 6) The Management Document Information retrieval server obtains the Management Document Information based on the request message.
- 7) The Management Document Information retrieval server sends the Management Document Information obtained to user system.

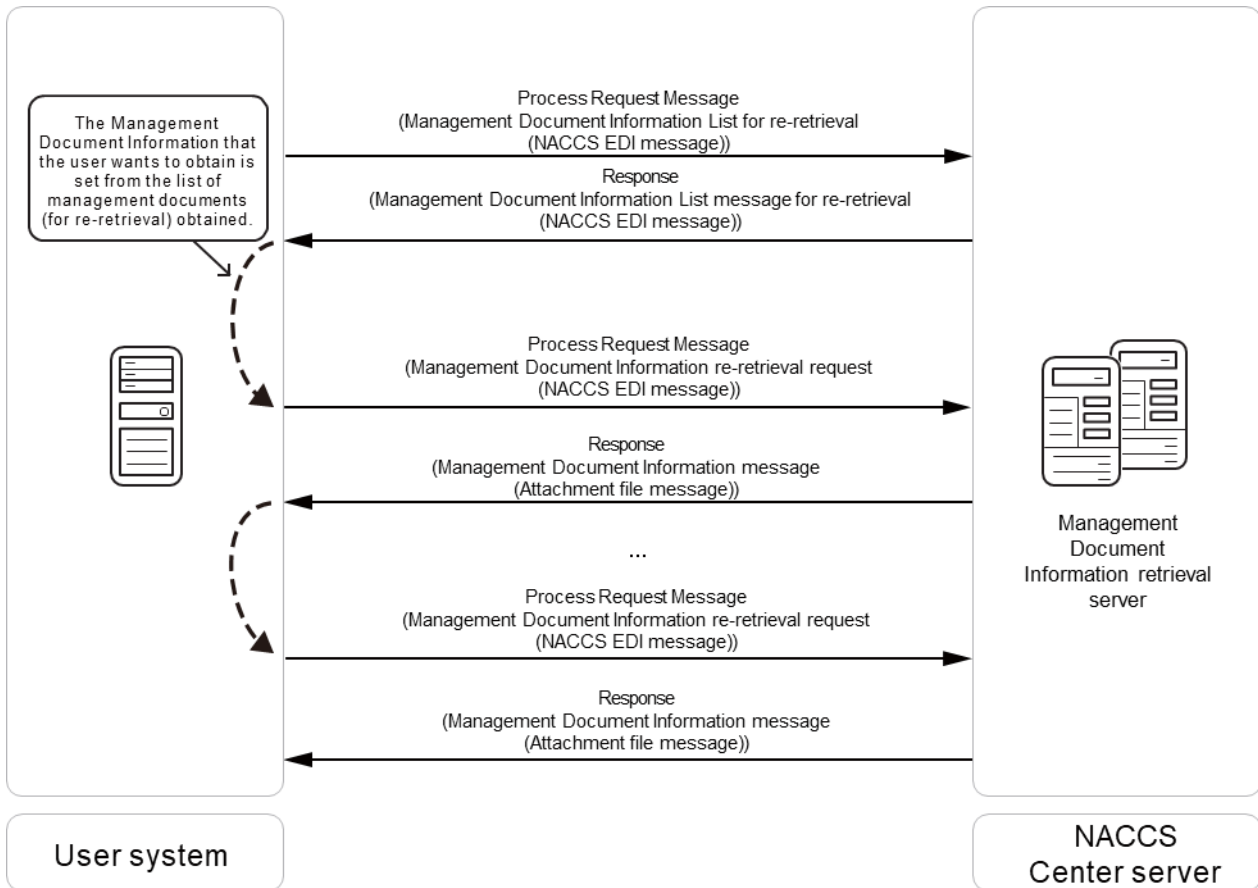


Figure 6.2.2 Sequence of Management Document Information Re-retrieval

- 1) In order to re-retrieve Management Document Information, user system sends a request message for retrieving a list of Management Document Information for re-retrieval to the Management Document Information retrieval server.
- 2) The Management Document Information retrieval server receives a request for a list from user system and searches for files.
- 3) The Management Document Information retrieval server returns the search results to user system.
- 4) From the Management Document Information List obtained, user system sets the Management Document Information to re-retrieve.
- 5) Based on the request from user system, a Management Document Information re-retrieval request message is sent to the Management Document Information retrieval server.
- 6) The Management Document Information retrieval server obtains the Management Document Information already retrieved based on the request message.
- 7) The Management Document Information retrieval server sends the Management Document Information obtained to user system.

## (B) Important Notes

- 1) Message format in Management Document Information retrieval procedures
  - The message format used in Management Document Information retrieval procedures shall be the attachment file message format.  
See "6.2.2.1 Message Structure (2) Case of Attachment File Messages" for the details of attachment file messages.
  - The Management Document Information retrieval procedures and the Management Document Information re-retrieval procedures shall be of different Procedure Codes.
  
- 2) File compression format

Management Document Information is stored in the GZIP compression format in NACCS Center server and is transmitted as it is. Therefore, user system must decompress GZIP compressed files.
  
- 3) Authentication at the time of Management Document Information retrieval

The Management Document Information retrieval server performs user authentication using the User Code (5 digits) + Identifying Numbers (3 digits) and password set in the message (NACCS EDI message) received from user system. Management Document Information can only be retrieved using the said User Code.  
In case of authentication error, a message indicating the authentication error is returned to user system.
  
- 4) Management Document Information retrieval function

Management Document Information can be retrieved by implementing the interface for retrieving management document information designed by NACCS Center in the user's system and by using HTTP connection.

## 6.2.2 Message Specification

In Management Document Information retrieval, NACCS EDI message format and the message format for attachment file message are used.

### (1) Message Structure

Outline of structure of each message format is as follows.

#### (A) Case of NACCS EDI messages

In Management Document Information retrieval, NACCS EDI message format is used for Process Request Messages and Process Result Messages. Figure 6.2.3 shows the outline of NACCS EDI messages.

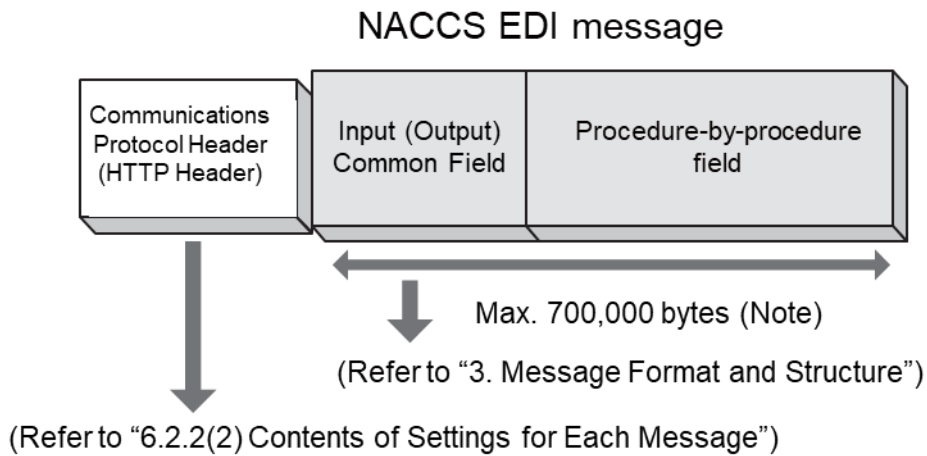


Figure 6.2.3 Outline of NACCS EDI messages

## 1) Process Request Messages

Figure 6.2.4 shows the format used when user system sends Process Request Messages (Management Document Information List Request, Management Document Information Retrieval Request, and Management Document Information Re-retrieval Request) to the management document information retrieval server in NACCS Center.

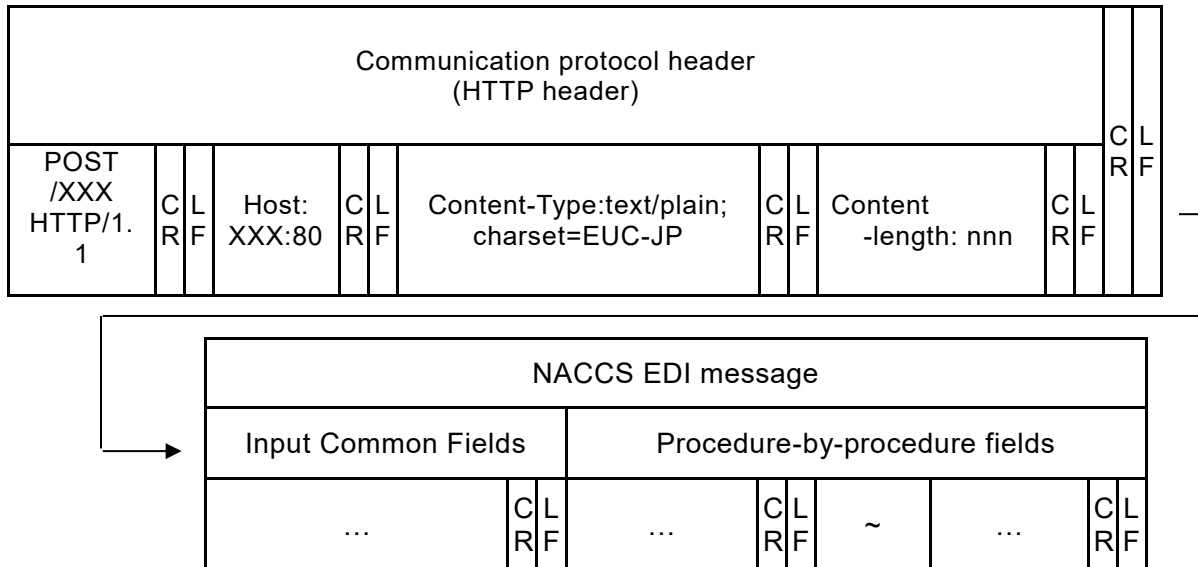


Figure 6.2.4 Message Content

## 2) Process Result Messages

Figure 6.2.5 shows the format used when the Management Document Information retrieval server in NACCS Center returns Process Result Messages (Management Document Information List message / Management Document Information message (error)) to user system in response to Process Request Messages.

See Figure 6.2.6 below for Process Result Messages that include Management Document Information since Management Document Information is returned to user system as compressed attachment files in GZIP format.

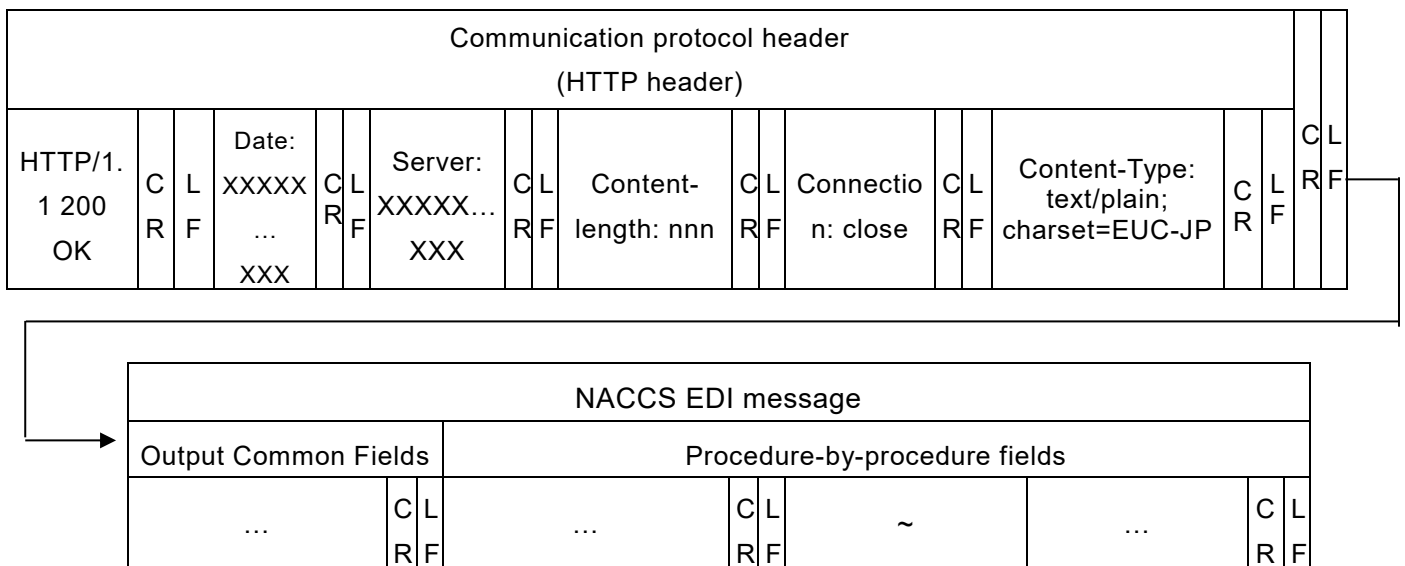
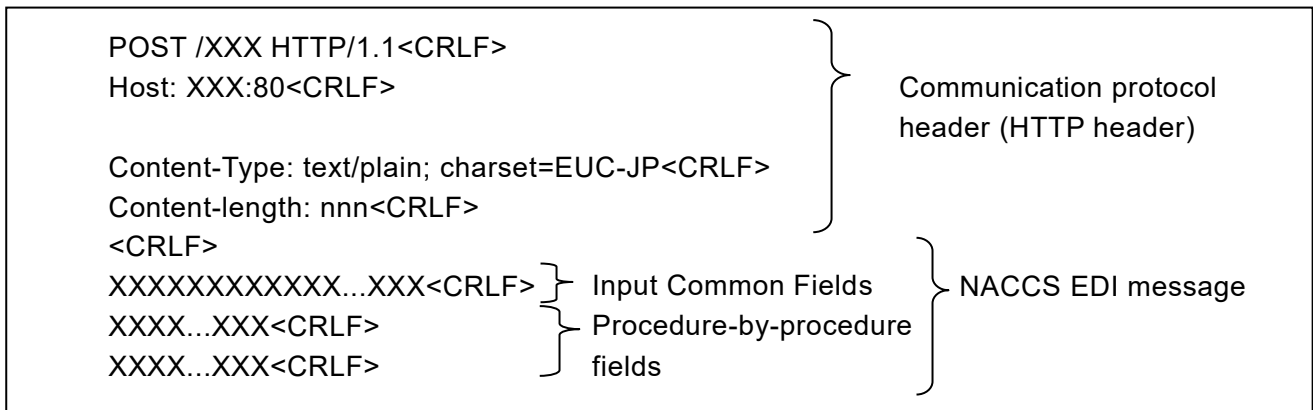


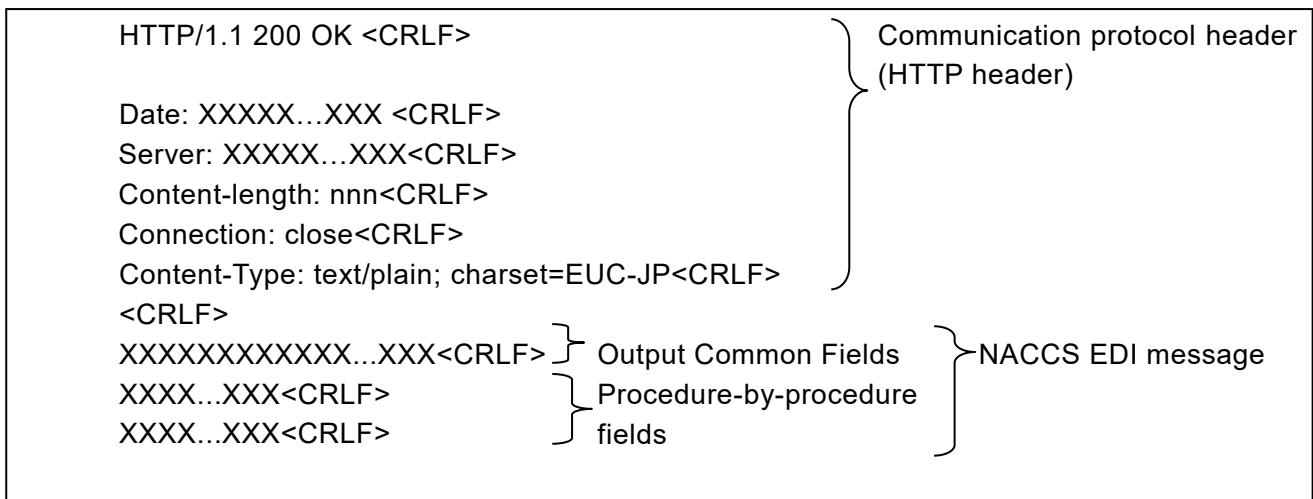
Figure 6.2.5 Message Content

(For reference) When the above message structure is viewed in a text format using text editor, etc., it looks like the following.

(a) Process Request Messages



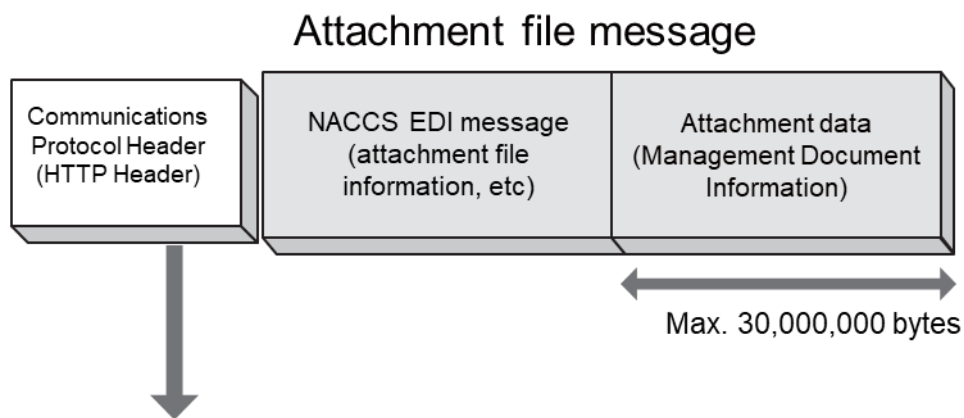
(b) Process Result Message



(Note) "<CRLF>" may be seen differently depending on text editors, etc. used.

## (B) Case of Attachment File Messages

Management Document Information is returned to user system as an attachment file message. Figure 6.2.6 shows the outline of attachment file messages.



(Refer to “6.2.2(2) Contents of Settings for Each Message”)

Figure 6.2.6 Outline of attachment file messages

When the Management Document Information retrieval server in NACCS Center sends Management Document Information to user system, the following format is used. Figure 6.2.7 shows the details.

### 1) Creating method

In NACCS, MIME (Multipurpose Internet Mail Extensions) is used when sending Management Document Information. Management Document Information is created in attachment file format.

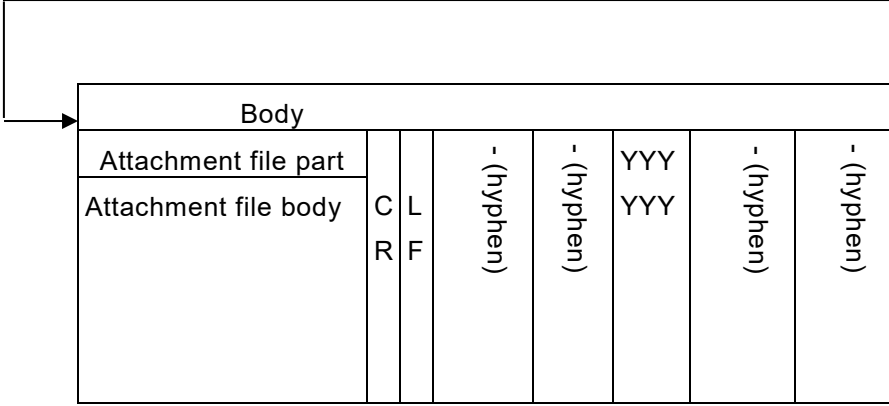
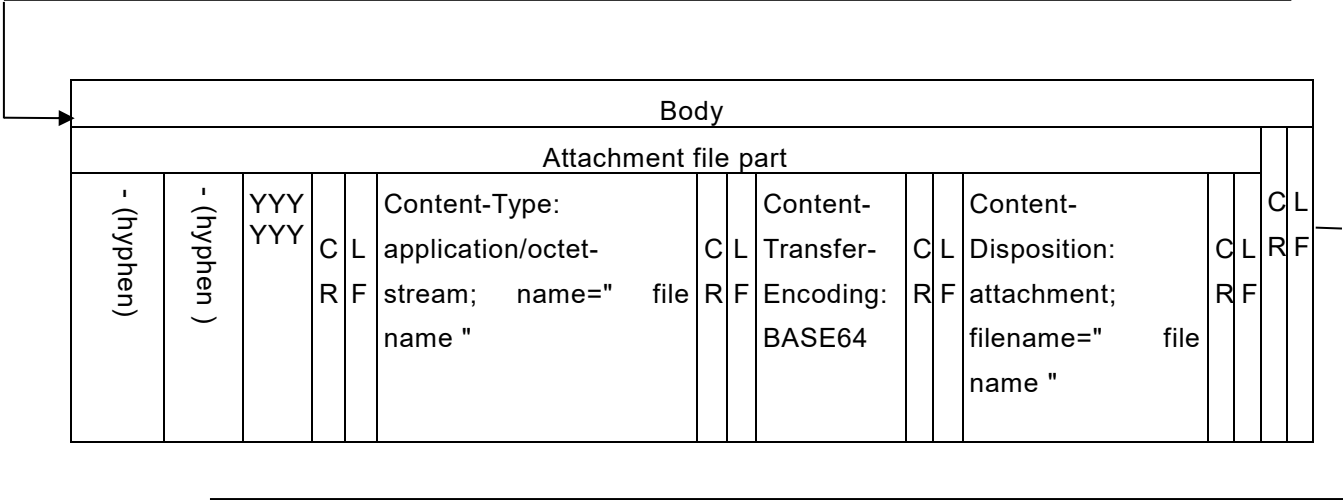
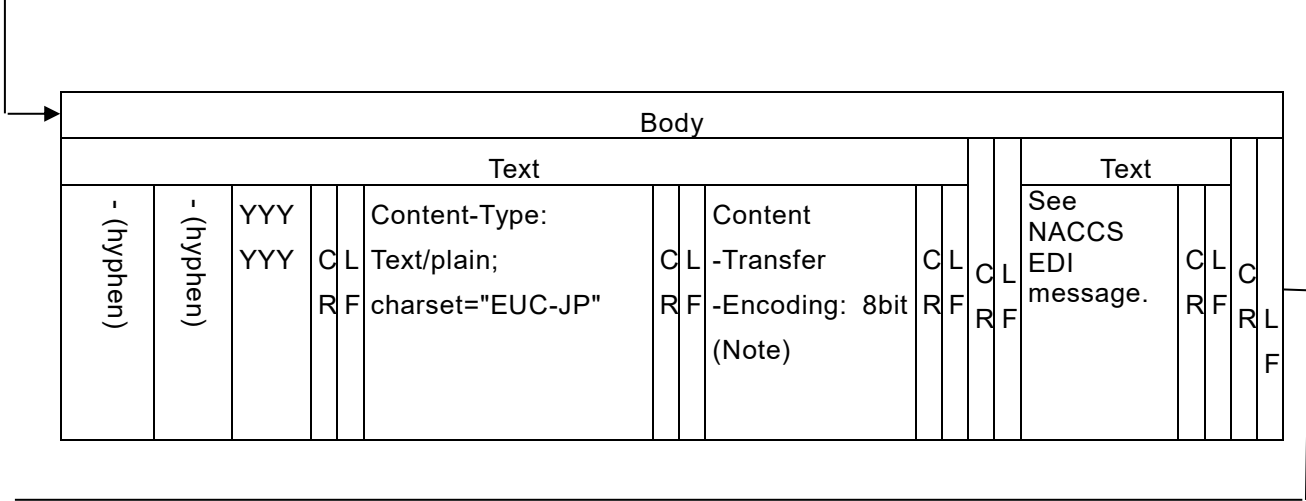
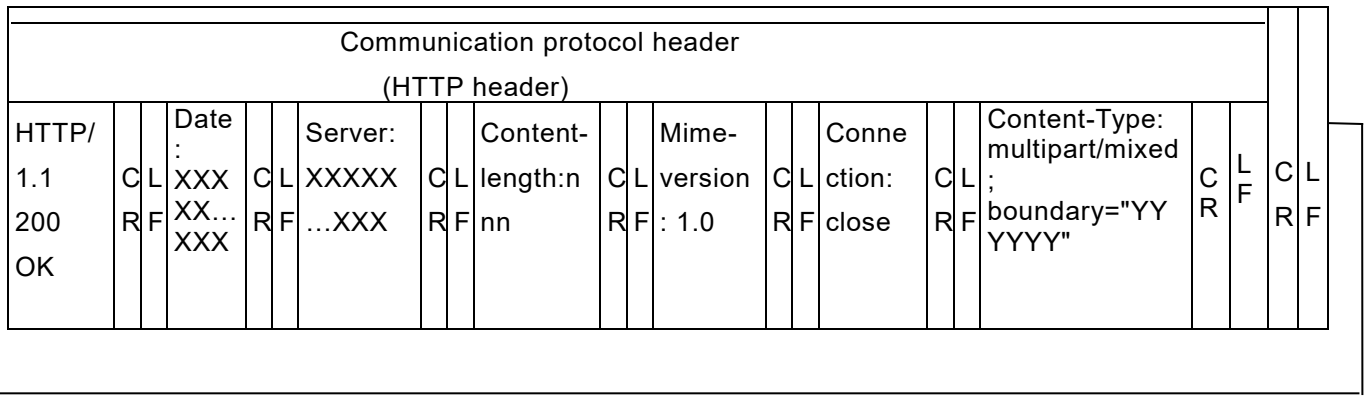
The detailed specification for sending attachment file messages are as follows.

- 1.0 is set for the MIME version.
- Content-Type shall be multipart/mixed, and Text/plain is set for NACCS message part and application/octet-stream for the attachment file part.
- BASE64 is set to Content-Transfer-Encoding of the attachment file part.
- "attachment" is set to Content-Disposition and a file name to "filename".
- A file is composed of one Management Document Information.
- A file is used as attachment data for each attachment file message.

### 2) Message image

- An attachment file message is composed of communication protocol header and body.
- NACCS EDI message and the body of attachment file encoded using BASE64 are set after <CRLF> following the HTTP header.





(Note) The setting value of this item depends on the E-mail software used. "8bit" is just an example.  
Figure 6.2.7 Example of Structure of attachment file messages



## (2) Content of Settings for Each Message

The content of settings for each message is as follows.

### (A) Settings for Management Document Information List Request Messages

#### 1) HTTP header

Table 6.2.3 shows the content of settings for HTTP header in Management Document Information List Request messages.

Table 6.2.3 HTTP Header (Management document Information List Request Message)

Item No.	Item	Setting
1	Request line	POST XXX HTTP/1.1<CRLF> POST shall be set to the request method. XXX is set according to the NACCS Center server of the destination. HTTP/1.1 shall be set to the HTTP version. If not, an error will result.
2	HOST	HOST: FQDN:80<CRLF> FQDN is set according to the NACCS Center server of the destination. 80 shall be set to the port number. If not, an error will result.
3	Content-Type	Content-Type: text/plain; charset=EUC-JP<CRLF> Fixed.
4	Content-length	Content-length: nnn<CRLF> The message size of Transmission Message shall be set in place of "nnn". If not, an error will result.

2) Input Common Fields

Table 6.2.4 shows the content of settings for Input Common Fields in Management Document Information List Request messages.

Table 6.2.4 Input Common Fields (Management Document Information List Request Message)

Item No.	Field name	Length	Settings
1	(Reserved area)	3	(Space is set as a fixed value)
2	Procedure Code	5	?LST△ (△ indicates a single-byte space)
3	(Reserved area)	21	(Space is set as fixed value)
4	User Code	5	User Code, Identifying Numbers, and User Password are set and used for user identifier
5	Identifying Numbers	3	
6	User Password	8	
7	(Reserved area)	319	(Space is set as a fixed value)
8	System identifier	1	(2 is set as a fixed value)
9	(Reserved area)	27	(Space is set as fixed value)
10	Message length	6	Indicates the length of NACCS EDI message (including Input Common Fields) 000409 (Fixed)

3) Procedure-by-procedure fields

Table 6.2.5 shows the content of settings for procedure-by-procedure fields in Management Document Information List Request messages.

Table 6.2.5 Procedure-by-procedure fields  
(Management Document Information List Request Message)

Item No.	Field name	length	Settings
1	Output Information Code	7	A space shall be set in case of normal retrieval. The Output Information Code subject to re-retrieval shall be set in case of re-retrieval (Note).
2	Delimiter	2	<CRLF> shall be set.

(Note) Since the volume of the information subject to re-retrieval is assumed to be large, the information subject is extracted by Output Information Code. Therefore, the Output Information Code shall be set in case of re-retrieval.

(B) Settings for Management Document Information List Messages

1) HTTP header

Table 6.2.6 shows the content of settings for HTTP header in Management Document Information List messages.

Table 6.2.6 HTTP Header (Management Document Information List Message)

Item No.	Item	Settings
1	Status line	HTTP/1.1 200 OK<CRLF> HTTP/1.1 shall be set to the HTTP version.
2	Date	The date and time when the message is generated shall be set. ((day of the week), dd MMM YYYY HH:mm:ss GMT format (Example: Mon, 01 Dec 2025 23:59:45 GMT))
3	Server	The information of the transmitting server shall be set.
4	Content-Type	Content-Type: text/plain; charset=EUC-JP<CRLF> Fixed.
5	Connection	Connection: close<CRLF> Fixed.
6	Content-length	Content-length: nnn<CRLF> The message size of Transmission Message shall be set in place of "nnn".

2) Output Common Fields

Table 6.2.7 shows the content of settings for Output Common Fields in Management Document Information List messages.

Table 6.2.7 Output Common Fields (Management Document Information List Message)

Item No.	Field name		Length	Settings
1	(Reserved area)		3	(Note 1)
2	Procedure Code		5	The same Procedure Code as that for Process Request Messages shall be set (?LST△ (△ indicates a single-byte space))
3	Output Information Code		7	Normal case: CAQ0160 Procedure error case: *C?LST△ Common error case: *CCMSG△ (△ indicates a single-byte space)
4	Date of Message Receipt		14	The Date of Message Receipt shall be set (yyyymmddhhmm△△)
5	User Code		5	The User Code of the user who receives the message shall be set
6	(Reserved area)		211	(Note 1)
7	Message control information	Division sequence number	3	Normal case: 001 Error case: 000
8		Termination	1	E (Fixed)
9		Message type	1	Normal case: M Error case: R
10		(Reserved area)	3	(Note 1)
11	(Reserved area)		110	(Note 1)
12	Message destination control format		1	Q (Fixed)
13	(Reserved area)		28	(Note 1)
14	Message length		6	Indicates NACCS EDI message length 000400–700000 (The maximum message length is 700,000)

(Note 1) The reserved area is used for the system control.

3) Procedure-by-procedure fields

Table 6.2.8 shows the content of settings for procedure-by-procedure fields in Management Document Information List messages (normal case).

Table 6.2.8 Procedure-by-procedure fields (Management Document Information List Message)

Item No.	Field name	Length	Settings	
1	Process Result Code	75	00000-0000-0000△-△ (The Process Result Code shall be set to the leading 15 digits and spaces to the following 60 digits)	
2	Delimiter	2	<CRLF>	
3	Management document file name (Note 1)	Output Information Code (Note 2)	7	The Output Information Code indicating the Management Document Information shall be set.
4		Target date	6	The date of data subject to editing shall be set (yymmdd format)
5		Delimiter	1	_ (Underscore)
6		Destination User Code	5	The destination user shall be set
7		Delimiter (Note 4)	1	_ (Underscore)
8		Subject (Note 3)	Max. 64	The Importer/Exporter code, etc. shall be set
9		Delimiter (Note 4)	1	_ (Underscore)
10		Copy source User Code (Note 5) (Note 6)	5	The User Code for the copy source shall be set
11		Delimiter	1	_ (Underscore)
12		Creation date and time	14	The system date and time when the transmission file is edited in NACCS Center server shall be set (yyyymmddhhmmss format)
13		Extension	4	.csv or .edi shall be set
14		Extension	3	.gz shall be set
15	(Reserved area)	16		
16	Delimiter (Note 1)	2	<CRLF>	
17	Size (Note 1)	8	File size (Unit: byte)  (For the maximum size, refer to "3.4 Message Types (3) Message for filing (Management Document) ")	
18	Delimiter (Note 1)	2	<CRLF>	

(Note 1) When there are multiple Management Document files, item no. 3 to 18 are repeated. The number of repeats is max 3,568. Item no.3 to 14 are variable length.

(Note 2) When NACCS Packaged Software is used to retrieve Management Document Information, NACCS Packaged Software converts the Output Information Code into Procedure Specification Number + Management Document Information name (Japanese), and therefore the following naming scheme is used.

*Procedure Specification Number + Management Document Information name (Japanese) + Target date + \_ + Destination User Code + \_ + Division sequence number + \_ + Importer/Exporter code, etc. + \_ + Copy source User Code, etc. + \_ + Creation date and time.csv*

(Example of file name of Management Document Information converted by NACCS Packaged Software)

199 Management Document Information retrieval data251100\_3ANAC\_001\_ABCDE0000000\_1ANAC\_20251208091024.csv

(Note 3) This field is used when the same Management Document Information is output to a single destination by splitting it into multiple files and for reports created on as-needed basis.

(Note 4) "\_"s (underscores) in front of and following the field 8 "Subject" are output with the "Subject" and are not output when "Subject" is not output.

(Note 5) This field is used only when the Management Document Information transmitted to a user is to be transmitted to another user. When "\_Subject\_" is included in the Management Document Information of copy source User Code, its content is output in front of this field.

(Note 6) When the field 8 "Subject" is output and the copy source User Code is not output, 2 underscores may be output side-by-side.

Table 6.2.9 shows the content of settings for procedure-by-procedure fields in Management Document Information List messages (error case).

Table 6.2.9 Procedure-by-procedure fields (Management Document Information List Message)

Item No.	Field name	Length	Settings
1	Process Result Code	75	Process Result Code indicating the error (15-digit Process Result Code is repeated at most 5 times.)
2	Delimiter	2	<CRLF>



(C) Settings for Management Document Information Retrieval Request  
 Message/Management document Information Re-Retrieval Request Messages

1) HTTP header

Settings are the same as that for Management Document Information List Request messages. (Table 6.2.3)

2) Input Common Fields

Table 6.2.10 shows the content of settings for Input Common Fields in Management Document Information Retrieval Request messages/Management Document Information Re-retrieval Request messages.

Table 6.2.10 Input Common Fields (Management Document Information Retrieval Request Message/Management Document Information Re-Retrieval Request Message)

Item No.	Field name	Length	Settings
1	(Reserved area)	3	(Space is set as fixed value)
2	Procedure Code	5	Management Document Information Retrieval Request message : ?GTN△ (△ indicates a single-byte space) Management Document Information Re-retrieval Request message : ?GTP△ (△ indicates a single-byte space)
3	(Reserved area)	21	(Space is set as fixed value)
4	User Code	5	User Code, Identifying Numbers, and User Password are set and used for user identifier
5	Identifying Numbers	3	
6	User Password	8	
7	(Reserved area)	319	(Space is set as a fixed value)
8	System identifier	1	(2 is set as a fixed value)
9	(Reserved area)	27	(Space is set as fixed value)
10	Message length	6	Indicates the length of NACCS EDI message (including Input Common Fields) 000530 (Fixed)

3) Procedure-by-procedure fields

Table 6.2.11 shows the content of settings for procedure-by-procedure fields in Management Document Information Retrieval Request messages/Management Document Information Re-retrieval Request messages.

Table 6.2.11 Procedure-by-procedure fields  
 (Management Document Information Retrieval Request Message/Management Document Information Re-Retrieval Request Message)

Item No.	Field name	Length	Settings
1	File name	128	The file name of the Management Document file to be retrieved shall be set. At most 128 bytes in accordance with the field "Management Document file name" in Management Document Information Message List.
2	Delimiter	2	<CRLF>

(D) Settings for Management Document Information Messages

1) HTTP header

Table 6.2.12 shows the content of settings for HTTP header in Management Document Information messages.

Table 6.2.12 HTTP Header (Management Document Information Message)

Item No.	Item	Settings
1	Status line	HTTP/1.1 200 OK<CRLF> HTTP/1.1 shall be set to the HTTP version. In case of normal response, 200 shall be set to the status code.
2	Date	The date and time of the message generation shall be set. ((day of the week), dd MMM YYYY HH:mm:ss GMT format (Example: Mon, 01 Dec 2025 23:59:45 GMT))
3	Server	The information of the transmitting server shall be set.
4	Content-length	Content-length: nnn<CRLF> The message size of Transmission Message shall be set in place of "nnn".
5	MIME-version	In NACCS, "1.0" shall be set.
6	Connection	Connection: close<CRLF> Fixed.
7	Content-Type	In normal case, multipart/mixed; boundary = "Arbitrary value" shall be set. In error case, Content-Type: text/plain; charset=EUC-JP<CRLF> is set.

2) Output Common Fields

Table 6.2.13 shows the content of settings for Output Common Fields in Management Document Information messages.

Table 6.2.13 Output Common Fields (Management Document Information Message)

Item No.	Field name		Length	Settings
1	(Reserved area)		3	(Note 1)
2	Procedure Code		5	The same Procedure Code as that for Process Request Messages shall be set.
3	Output Information Code		7	<ul style="list-style-type: none"> <li>• Normal response or procedure error response of Management Document Information Retrieval Request messages: *C?GTN△</li> <li>• Common error response of Management Document Information Retrieval Request messages: *CCMSG△</li> <li>• Normal response or procedure error response of Management Document Information Re-retrieval Request messages: *C?GTP△</li> <li>• Common error response of Management Document Information Re-retrieval Request messages: *CCMSG△</li> </ul> (△ indicates a single-byte space)
4	Date of Message Receipt		14	Date of Message Receipt shall be set (yyymmddhhmm△△)
5	User Code		5	The User Code of the user that receives the message shall be set
6	(Reserved area)		211	(Note 1)
7	Message control information	Division sequence number	3	000–999 The serial number shall be set according to the number of divisions of the Management Document. If the document is not divided, 000 shall be set.
8		Termination	1	"E" shall be set for the last message. A single-byte space shall be set otherwise.
9		Message type	1	R (Fixed)
10		(Reserved area)	3	(Note 1)
11	(Reserved area)		110	The information set for the Process Request Message shall be output as it is.
12	Message destination control format		1	Q (Fixed)
13	(Reserved area)		28	(Note 1)
14	Message length		6	Indicates NACCS EDI message length 000477 (Fixed)

(Note 1) The reserved area is used for the system control.

3) Procedure-by-procedure fields

Table 6.2.14 shows the content of settings for procedure-by-procedure field in Management Document Information messages.

Table 6.2.14 Procedure-by-procedure fields (Management Document Information Message)

Item No.	Field name	Length	Settings
1	Process Result Code	75	Normal case: 00000-0000-0000  (The Process Result Code shall be set to the leading 15 digits and spaces to the following 60 digits)  Error case: Process Result Code indicating the error  (15-digit Process Result Code is repeated at most 5 times)
2	Delimiter	2	<CRLF>

4) Attachment File

Normal case: Management Document Information encoded using BASE64 shall be attached.

Error case: No attachment file exists.

### (3) Naming Scheme of Management Document Information Files

The file name of CSV format Private Management Document Information is described as follows.

(A) File Name of CSV Format Management Document Information

*Output Information Code ([1]) + Target date ([2]) + \_ +  
Destination User Code ([3]) + \_ + Division sequence number ([4]) + \_ +  
Importer/Exporter code, etc. ([5])  
+ \_ + Copy source User Code, etc. ([6]) + \_ + Creation date and time ([7]).csv*

(B) File Name of Management Document Information Retrieved by NACCS Packaged Software

(After the retrieval, NACCS Packaged Software converts the file name and then stores it)

*Procedure Specification Number + Management Document Information name  
(Japanese) ([1]) + Target date ([2]) + \_ +  
Destination User Code ([3]) + \_ + Division sequence number ([4]) + \_ +  
Importer/Exporter code, etc. ([5])  
+ \_ + Copy source User Code, etc. ([6]) + \_ + Creation date and time ([7]).csv*

- 1) : Indicates the Output Information Code of the Management Document Information.
- 1) ': Indicates the document number of Procedure Specification, which describes the specification of Management Document Information and Japanese name of the Management Document Information.
- 2) : Indicates the date of the data subject to editing.  
YYMMDD model (YY indicates the lower 2 digits of the year).  
\* YYMM00 is used for monthly reports, and YY0000 for annual reports.
- 3) : Indicates the destination user.
- 4) : Indicates the serial number when output is divided. "Serial number + E" shall be output for the last file.
- 5) : Indicates the Importer/Exporter code, etc. (Optional output)  
\* This field is used when the same Management Document Information is output to a single destination by splitting it into multiple files. In addition, for Management Document Information for which reports are created on as-needed basis, "ZUIJI\_Serial No. of Receipt", "ZUIJI\_Serial No. of Receipt\_Serial number", or "ZUIJI\_Importer/Exporter code, etc.\_Serial No. of Receipt\_Serial number" is added. The content of output shall be set according to each output. See the "Procedure Specification" for Management Document that are output as multiple files and the unit of output. See "Table A6-9-2 Private Management Document Information List" for Management Document Information for which reports are created on as-needed basis.
- 6) : Indicates the copy source User Code. (Optional output)  
\* This field is used when the Management Document Information transmitted to a user is to be transmitted to another user. When "\_Importer/Exporter code, etc.\_" is included in the file name of copy source Management Document Information "\_Importer/Exporter code, etc.\_" is output in front of this field. Management Document Information transmitted to other users are those specified in the Procedure Specification or those set by NACCS Center according to the requests from the users.  
\* When the Importer/Exporter code, etc. ([5]) is output and this field ([6]) is not output, 2 underscores may be output side-by-side. (See below (Example 3))
- 7) : Indicates the system date and time when the transmission file is edited in NACCS Center server.  
(Note 1) "\_" (underscore) in front of the item [4] is output with the item [4] and is not output when the item [4] is not output.  
(Note 2) "\_" (underscores) in front of and following the item [5] are output with the item [6] and are not output when the item [5] is not output.

Examples of the file name of CSV format Private Management Document Information retrieved by the user's system are described as follows.

(Example 1) Case of normal daily transmission Management Document Information

(Management Document Information edited on December 9, 2025 at 04:50:12 to be transmitted to 1ANAC

(Daily report) (Data is of December 8))

AAA9990251208\_1ANAC\_20251209045012.csv

└Output Information Code

(Example 2) Case of transmitting the same Management Document Information of the user of

(Example 1) also to 3ANAC

AAA9990251208\_3ANAC1ANAC\_20251209045012.csv

(Example 3) Case of monthly transmission Management Document Information for which Importer/Exporter code, etc. is set for the file name

(Management Document Information edited, December 08, 2025 at 09:10:24 to be transmitted to 1ANAC

(Monthly report) (Data is of November))

AAA9990251100\_1ANAC\_ABCDEFGHIJKL\_20251208091024.csv

: Management Document Information of the importer ABCDEFGHIJKL

AAA9990251100\_1ANAC\_MNOPQRSTUVWXYZ\_20251208091024.csv

: Management Document Information of the importer MNOPQRSTUVWXYZ

(Example 4) Case of transmitting the Management Document Information of the user of (Example 3) also to 3ANAC

AAA9990251100\_3ANAC\_ABCDEFGHIJKL\_1ANAC\_20251208091024.csv

: Management Document Information of the importer ABCDEFGHIJKL

AAA9990251100\_3ANAC\_MNOPQRSTUVWXYZ\_1ANAC\_20251208091024.csv

: Management Document Information of the importer MNOPQRSTUVWXYZ

(Example 5) Case of transmitting the Management Document Information of the user of (Example 1) by dividing it into 3 files

AAA9990251208\_1ANAC\_001\_20251209045012.csv

AAA9990251208\_1ANAC\_002\_20251209045012.csv

AAA9990251208\_1ANAC\_003E\_20251209045012.csv

## 6.2.3 Handling Errors

### (1) Errors due to the Settings for HTTP Header

Table 6.2.15 shows handling errors occurred at the time of HTTP request.

Table 6.2.15 Handling Errors at the Time of HTTP Request

Item No.	Method	Assumed errors and handling them
1	POST	<p>HTTP request is made, but no response is returned from the Management Document Information retrieval server in NACCS Center.</p> <p>&lt;Causes and handling&gt;</p> <ul style="list-style-type: none"> <li>• The destination URL or destination port number is incorrect               <ul style="list-style-type: none"> <li>→ Confirm that the destination URL is correct and the connection to the port number 80 is requested.</li> </ul> </li> <li>• NACCS Center server is under maintenance.               <ul style="list-style-type: none"> <li>→ Information about maintenance of NACCS Center server is announced to the public on NACCS Information. If it is under maintenance, try re-connecting after the completion of the maintenance.</li> </ul> </li> <li>• NACCS Center server and/or network is in failure.               <ul style="list-style-type: none"> <li>→ Try re-connecting after some time. If it is not recovered for a long time, request for investigation to the help desk in NACCS Center. The failure information is also updated on NACCS Information.</li> </ul> </li> </ul> <p>Since the information on the maintenance and failure of the server for testing connection will not be notified on NACCS Information, however, consult NACCS Center for the status of NACCS Center server when a connection to the server fails for a long time during the hours when connection tests can be performed.</p> <hr/> <p>An error response (other than the normal response (200)) is returned.</p> <p>&lt;Causes and handling&gt;</p> <p>[1] The destination URL is incorrect. (403 or 404)</p> <ul style="list-style-type: none"> <li>→ Confirm that the URL notified by NACCS Center is specified.</li> </ul> <p>[2] The HTTP header is incorrect. (400)</p> <ul style="list-style-type: none"> <li>→ Create the correct HTTP header and retry.</li> </ul>

## 6.2.4 Others

### (1) Limits

When performing Management Document Information retrieval in user system, the following must be met.

- (A) Management Document Information retrieval in user system is available only when dedicated line connection or Fiber Optic Broadband connection is used for the access line.
- (B) Due to the restrictions on the capacity of the Management Document Information retrieval server, the information must promptly be retrieved on (or after) the transmission date and time in user system.
- (C) In order to avoid delay in response associated with the concentration of retrieval requests from some users, users of the user's system must meet the following conditions.
  - Retrieval requests from the same user's system shall not be made by multiple users at the same time.
  - Retrieval requests for multiple Management Document shall not be made by the same user at the same time.

### (2) Other Precautions

Users of Management Document Information retrieval (in the user's system) need to pay attention to the following.

- (A) Under heavy load of the system, operational restrictions such as not accepting messages from all users may be enforced. In this case, NACCS Center will inform the users.
- (B) Management Document Information retrieved by the user (except for reports created on as-needed basis) is moved to the directory for retransmission of Management Document Information retrieval server. However, since the retrieval status is not synchronized between the Main center and the Backup center, the retrieved Management Document Information may be retrieved again when switching to the Backup center due to the occurrence of a large-scale failure or a large-scale disaster, or when switching back to the Main center.



## 6.2.5 Values of Various Timers

Table 6.2.16 shows the timer values specified for Management Document Information retrieval (in the user's system). In addition, Figure 6.2.8 and Figure 6.2.9 shows the location of setting each timer.

Table 6.2.16 Timer Values

ID	Monitoring content	Timer value
T01	Observation time for the HTTPS connection between the user terminal and the Management Document Information retrieval server in NACCS Center when user sends the message.	Specified by the user
T02	Interval to carry out Management Document Information list request for re-retrieval.	It is recommended to take about 30 minutes interval before executing the next procedure

(Note) T01 and T02 in the ID column of Table 6.2.16 indicates the ID of the timer shown in Figure 6.2.8 and Figure 6.2.9.

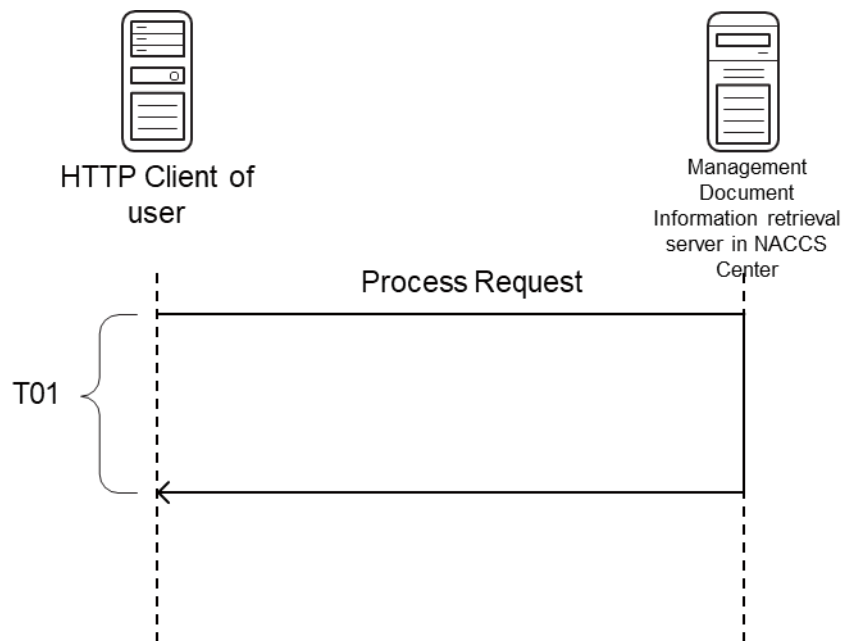


Figure 6.2.8 Timer Setting during Normal Connection

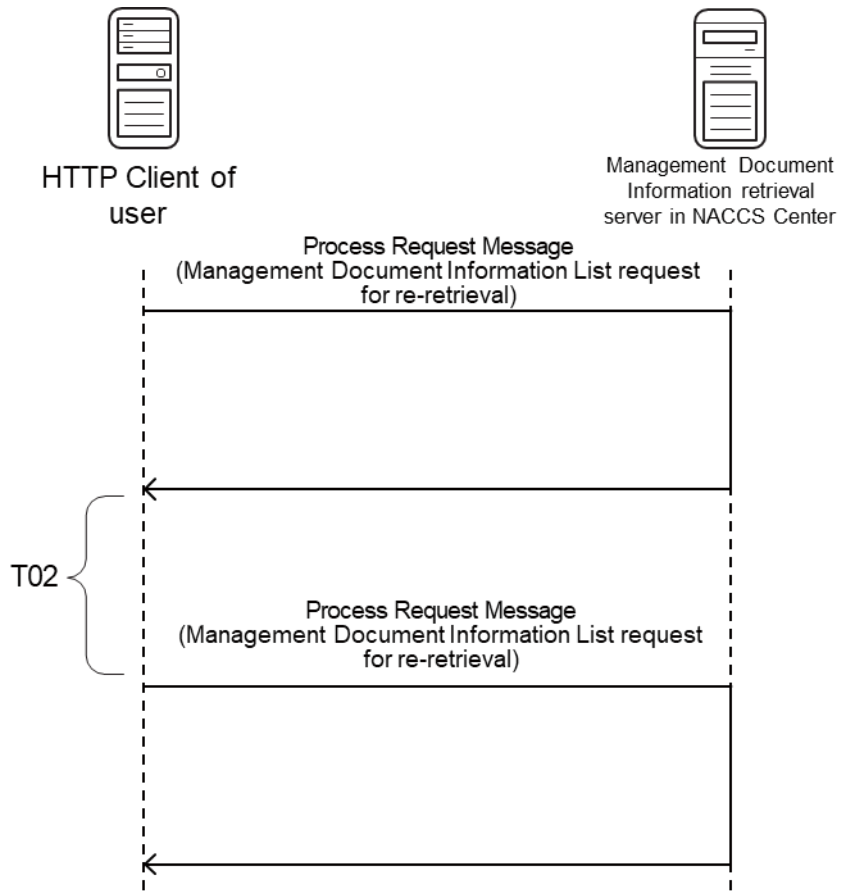


Figure 6.2.9 Timer setting in Management Document Information list request for re-retrieval