

## 5. Destination Control

## 5. Destination Control

### 5.1 Outline of Destination Control

Destination control is a function which uses a destination control table which corresponds to a combination of the output pattern of the Process Result Messages and the Processing Mode (interactive, E-mail, and WebNACCS), and stores the Process Result Messages in the Output Message Cache according to the destination designated by each input terminal, User code, and Output Information Code.

In NACCS, output pattern of the Process Result Message has 3 types, INQ type, EXZ type, and EXC type. These patterns are called the message destination control format.

Figure 5.1.1 shows an example of 3 output patterns when a Customs Broker carries out "Import Declaration (IDC)". In addition, Figure 5.1.2 shows the schematic diagram of destination control process.

(Note) For WebNACCS Processing Mode, only EXC type report can be output for Interactive Processing Mode and E-mail Style Processing Mode.

For the output/printing method of Output Information Message (for reports), which is used by users who only use WebNACCS Processing Mode, refer to the "Operation Manual for WebNACCS."

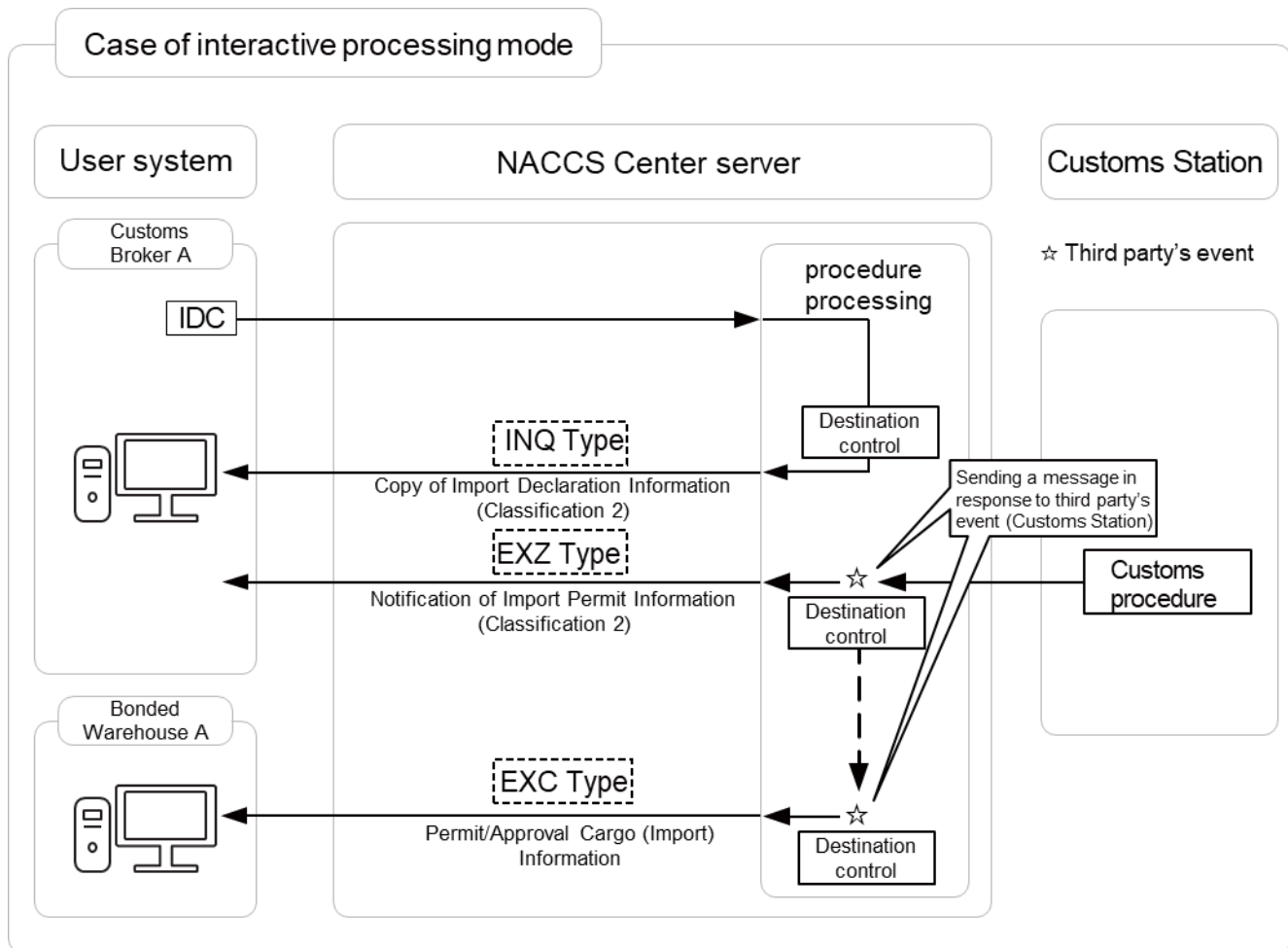


Figure 5.1.1 Example of Output Patterns of Process Result Messages

INQ type: A Process Result Message (Copy of import declaration information) is immediately output to the user who sends a Process Request Message (the user computer of Customs Broker A).

EXZ type: A Process Result Message (Notification of Import Permit Notification) is output to the user who send a Process Request Message (the user computer of Customs Broker A) in response to a third party event (examination completion of Customs Station).

EXC type: A Process Result Message (Permit/Approval Cargo (Import) Information) is output to the user (the user computer of Bonded Warehouse A) who is different from the user who send a Process Request Message (Customs Broker A) in response to a third party event (examination completion of Customs Station).

(Note 1) User computer refers to the following.

- When a router connection is used as the connection method, it refers to a "computer (each logical terminal name)."
- In the case of a gateway connection (SMTP Two-Way), it refers to the "user's SMTP server (each E-mail address)."
- In the case of a gateway connection (net API), it refers to the "user's net API server (each logical terminal name)."

(Note 2) For E-mail Style Processing Mode, all "user computers" should be read as "Inbox for incoming messages".

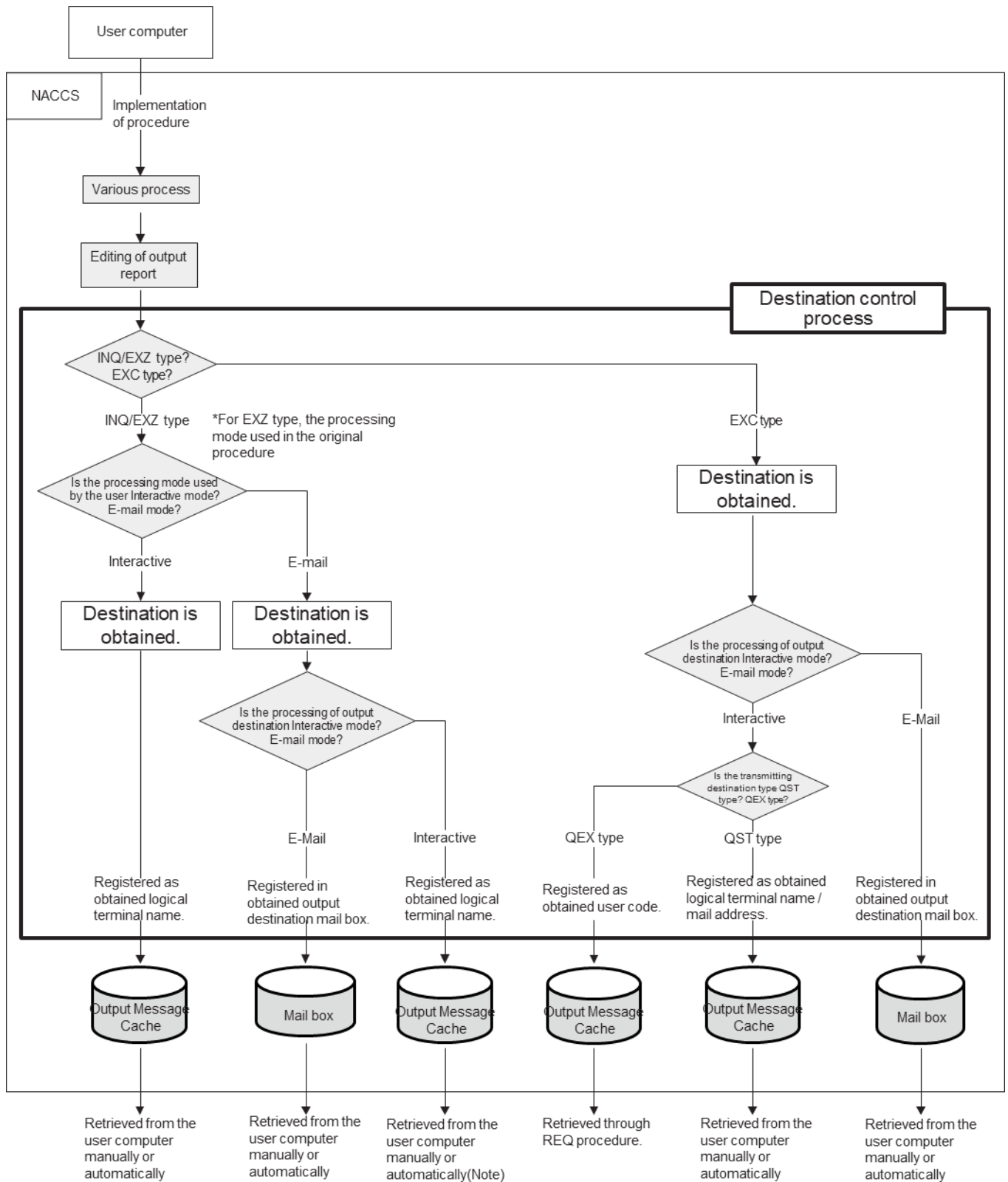


Figure 5.1.2 Overview diagram of Destination Control Process

(Note) Report output can be added to the "Additional Output Destination mailbox ID". Refer to "5.2 Destination Control: Settings of Destination for Process Result Message" and "Table A11-1 List of Items Subject to Changing Settings Online by users."