

Appendix 7. Accumulative Processing Procedures

Appendix 7. Accumulative Processing Procedures

Accumulative processing procedures include 2 patterns, namely division processing (pattern 1) and automatic invocation processing (pattern 2). In either case, child procedures are processed by the system with the procedure codes that are different from the procedure code (of the original procedure) used when a procedure is processed by the user. Therefore, this needs to be dealt with to enable users to process them normally. In addition, accumulative processing procedures use a system for processing a certain number of cases at a certain interval so that they will not affect processing performance of other general online procedures. Therefore, when accumulative processing procedures are concentrated, it may take time after procedures triggered by invocation until accumulative processing procedures complete.

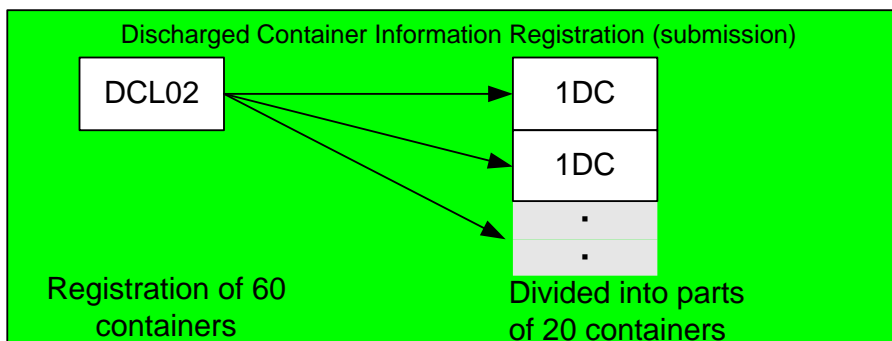
Notices of the completion of batch procedures processed on as-needed basis that are invoked in delayed mode are implemented by automatic invocation processing (pattern 2) of accumulative processing procedures.

The details of accumulative processing procedures for division processing (pattern 1) and automatic invocation processing (pattern 2) are individually described below.

(1) Division Processing <Pattern 1>

When the volume of processes generated from a single procedure is very large, the procedure is divided into child procedures of certain small processing unit and then processed.

(Example) Case of processing "4012. Discharged Container Information Registration (submission) (DCL02)" procedure



<Example of generation of child procedures>
When registering 60 containers, a child procedure 1DC, which divides 60 containers into smaller parts of 20 containers, is generated. 1DC is generated even when registering only 1 container.

[Notes to users]

[1] Processing result notification of child procedures is output apart from the original procedure (DCL02), and the output timing of processing result notification of the original procedure differs from that of child procedures.

[2] The procedure codes of child procedures are set to the "procedure code" of output common fields of processing result notifications of the procedures.

→Therefore, care must be taken when sorting processing result messages received, etc. using the procedure codes set to output common fields.

(This needs not to be considered when packaged software provided by NACCS Center is used.)

Since the input message ID set by the original procedure is set as is to the input message ID in

output common fields of processing result notification messages and of output information messages generated by child procedures, the corresponding processing request messages can be identified.

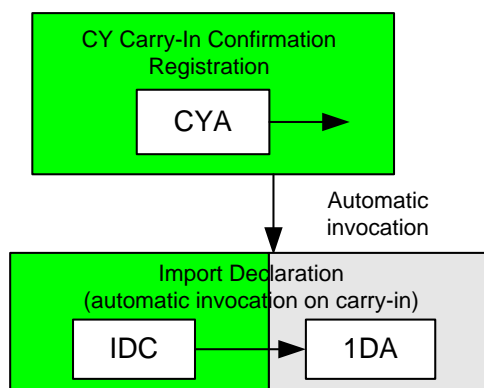
(2) Automatic Invocation Processing <Pattern 2>

When automatic invocation on carry-in and automatic invocation during office operating hours are registered, processing of procedures is triggered by carry-in procedures and office operating day and time. In this case, procedures automatically invoked are processed by the system as procedures different from the original procedure.

In addition, procedures are processed when certain information is entered. For example, when entries are made to extend the due date of payment of customs duties in Import Declaration procedure (IDC), a procedure for changing security information (SM2) is automatically invoked to debit the necessary amount of securities.

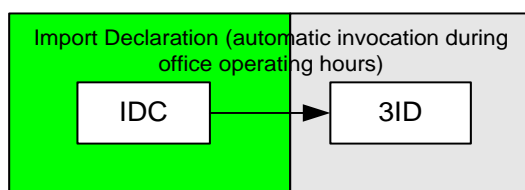
(Example) Case of processing "5006. Import Declaration (IDC)" procedure

a. Declaration on carry-in



<Example of generation of child procedures>
"Import Declaration" procedure is automatically invoked as 1DA when "CY Carry-In Confirmation Registration" procedure is processed

b. Declaration during office operating hours (Office operating hours)



<Example of generation of child procedures>
"Import Declaration" procedure is automatically invoked as a child procedure 3ID during office operating hours

[Notes to users]

- [1] In case of declaration during office operating hours and declaration on carry-in, Import Declaration procedures are automatically invoked with the procedure codes different from that of the original procedure (IDC), respectively. In addition, the output timing of processing result notice of the original procedure and that of automatically invoked procedures are different.
- [2] The procedures code different from that of the original procedure is set to the "procedure code" of output common fields of processing result notifications of procedures automatically invoked.

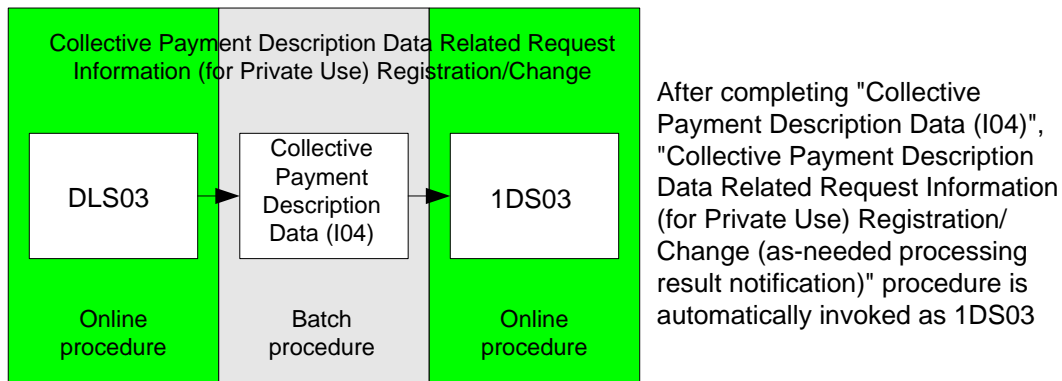
→Therefore, care must be taken when sorting processing result messages received, etc. using the procedure codes set to output common fields.

(This needs not to be considered when packaged software provided by NACCS Center is used.)

Since the input message ID set by the original procedure is set as is to the input message ID in output common fields of processing result notification messages and of output information messages generated by procedures automatically invoked, the corresponding processing request messages can be identified.

For a batch procedure processed on as-needed basis, request information to process the batch procedure is registered to the system by each As-Needed Report Request Information Registration/Change procedure. In this case, the batch procedure processed on as-needed basis is automatically invoked based on the registered information, and As-Needed Processing Result Notification procedure for notifying the completion is processed by the system as another procedure after completing the batch procedure.

(Example) Case of requesting the creation of "collective payment description data"



[Notes to users]

- [1] As-Needed Processing Result Notification procedure is automatically invoked with the procedure code different from that of each As-Needed Report Request Information Registration/Change procedure.
- [2] The procedure code different from that of each procedure is set to the "procedure code" of output common fields of the processing result notification of the procedure automatically invoked.

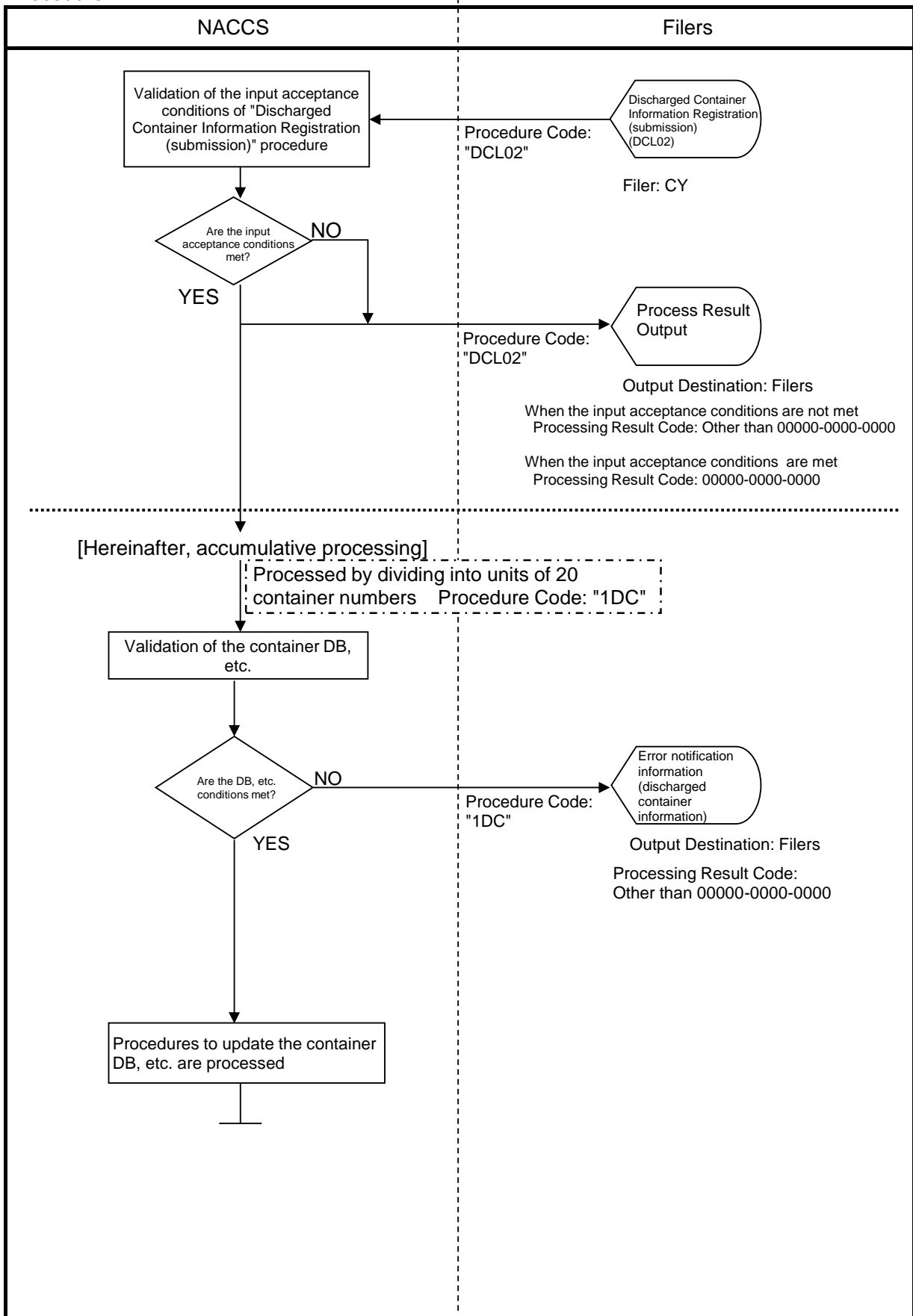
→Therefore, care must be taken when sorting processing result messages received, etc. using the procedure codes set to output common fields.

(This needs not to be considered when packaged software provided by NACCS Center is used.)

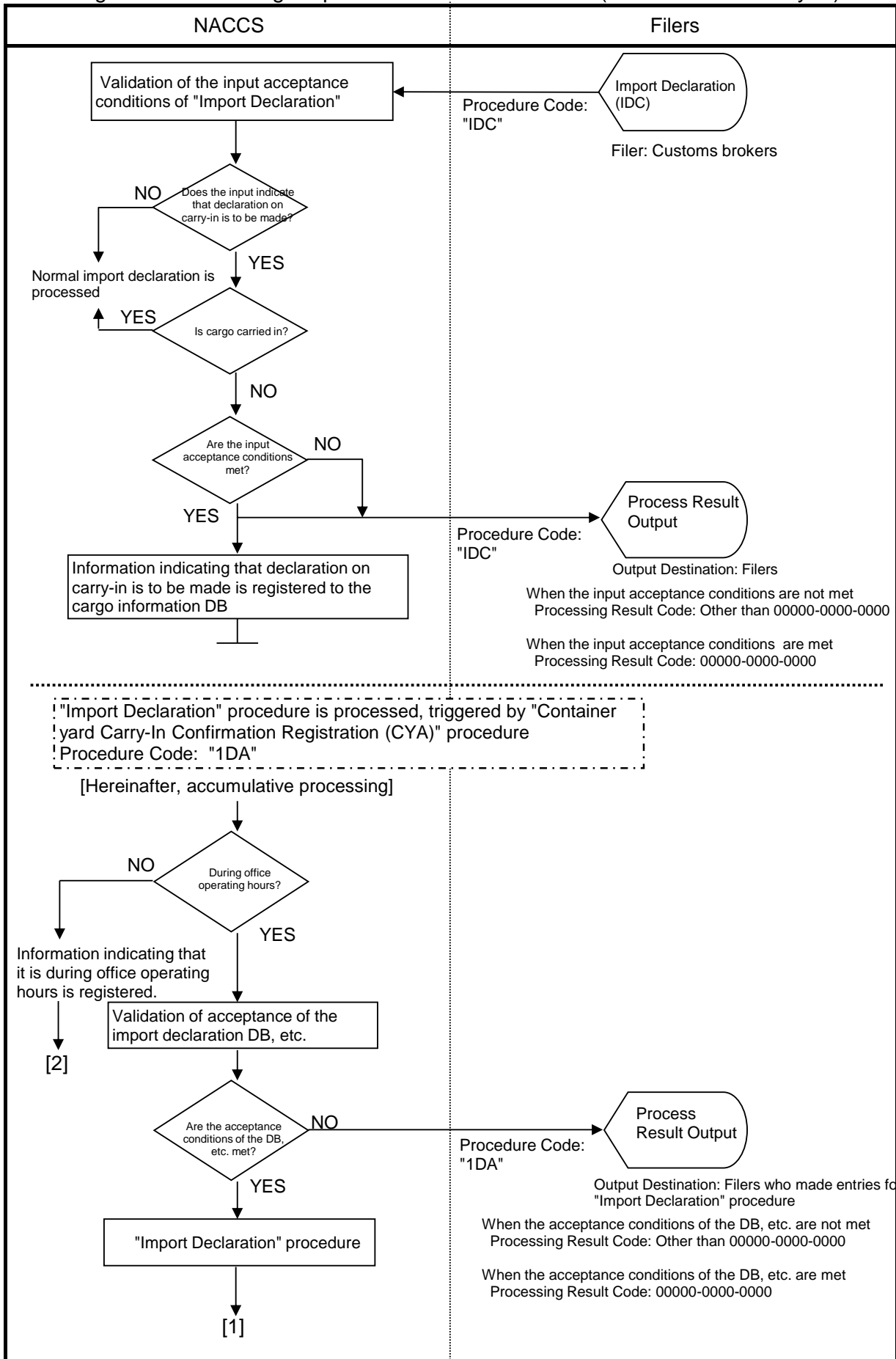
Since the input message ID set by the original procedure is set as is to the input message ID in output common fields of processing result notification messages and of output information messages generated by procedures automatically invoked, the corresponding processing request messages can be identified.

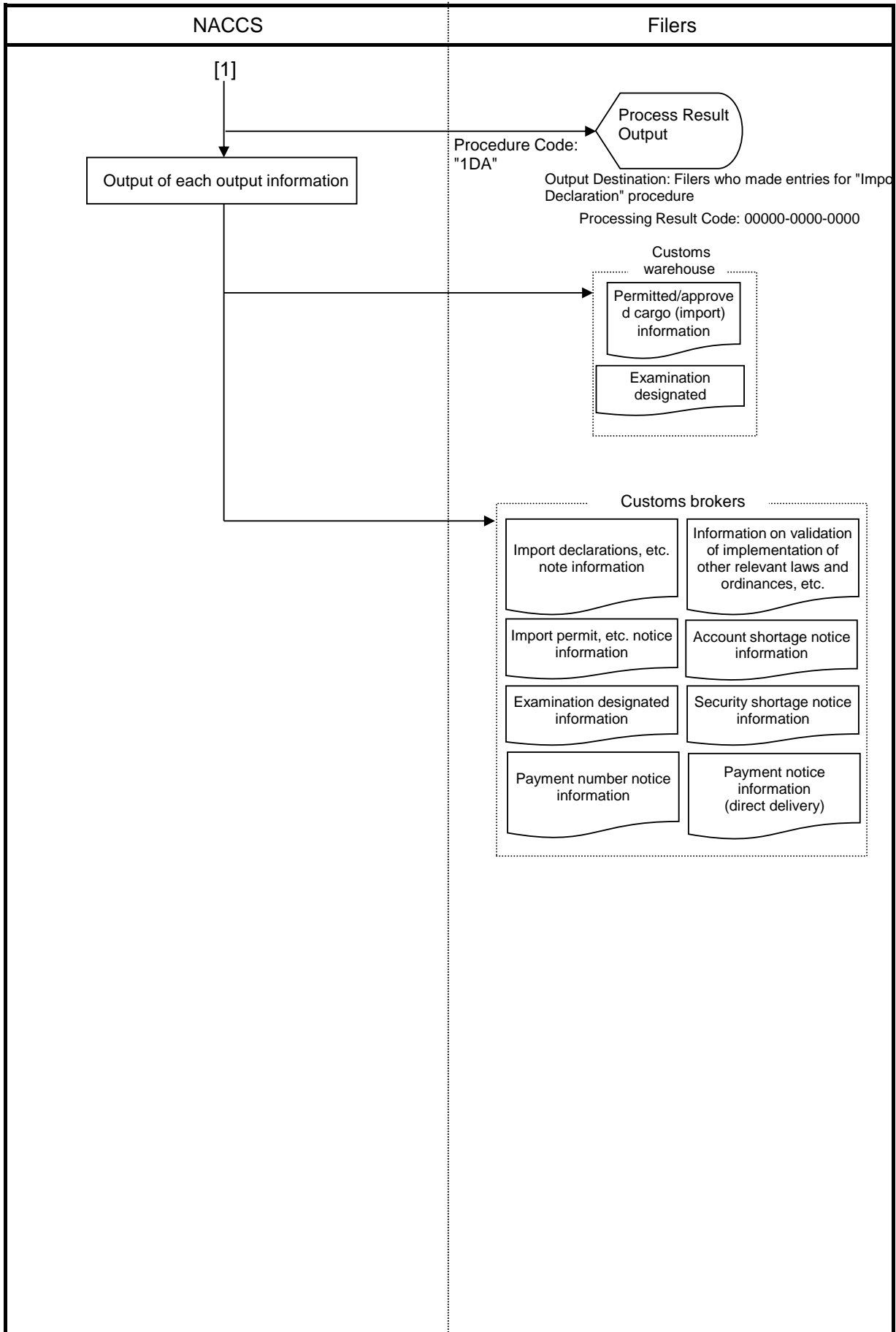
Appendix Table 7-1 Flow of Accumulative Processing - References 1, 2, 3, and 4
(Reference 1/Sea)

Flow Diagram of Processing "Discharged Container Information Registration (Submission)" Procedure

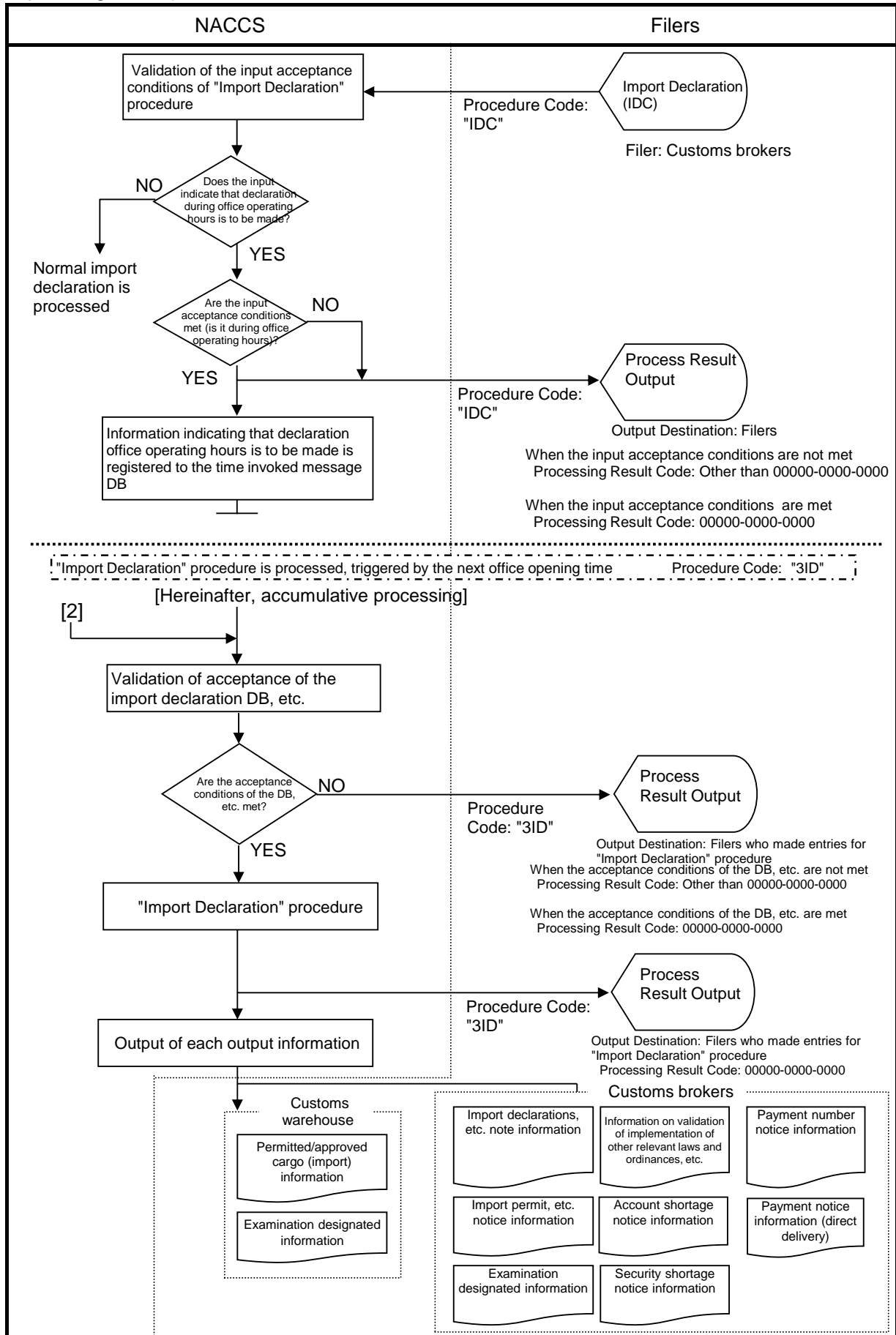


Flow Diagram of Processing "Import Declaration" Procedure (Declaration on Carry-In)

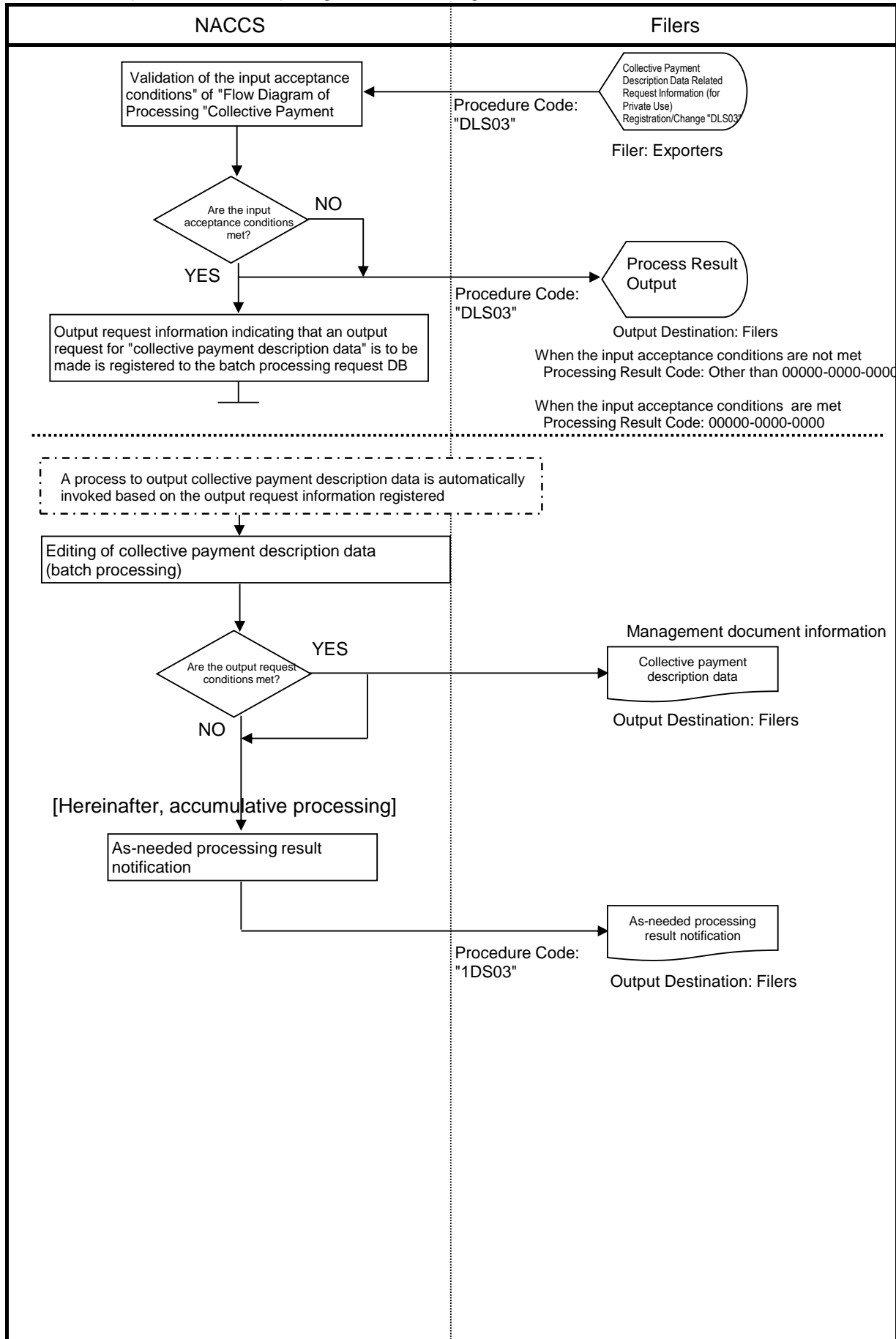




Flow Diagram of Processing "Import Declaration" Procedure (Declaration During Office Operating Hours)

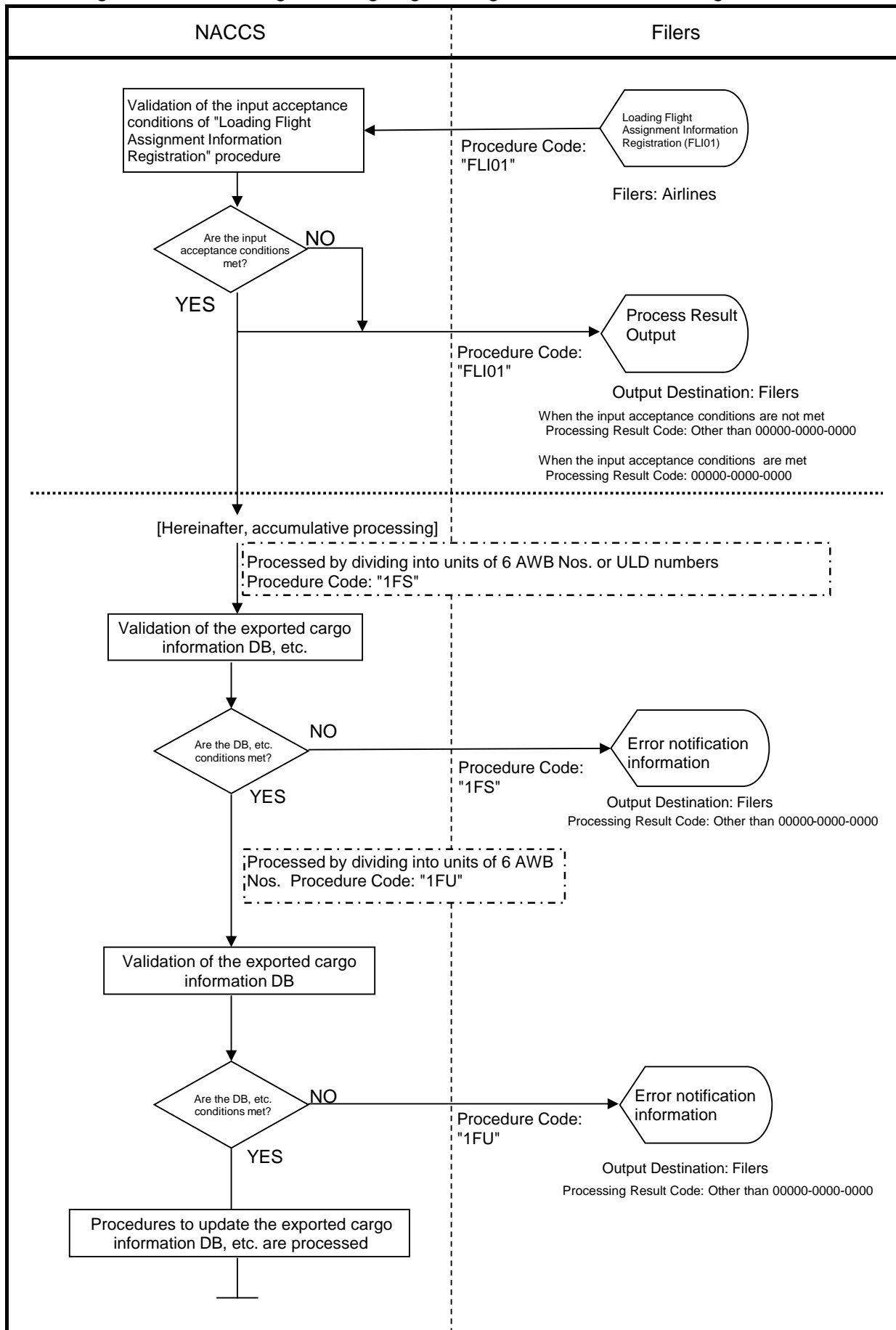


Flow Diagram of Processing "Collective Payment Description Data Related Request Information (for Private Use) Registration/Change" Procedure

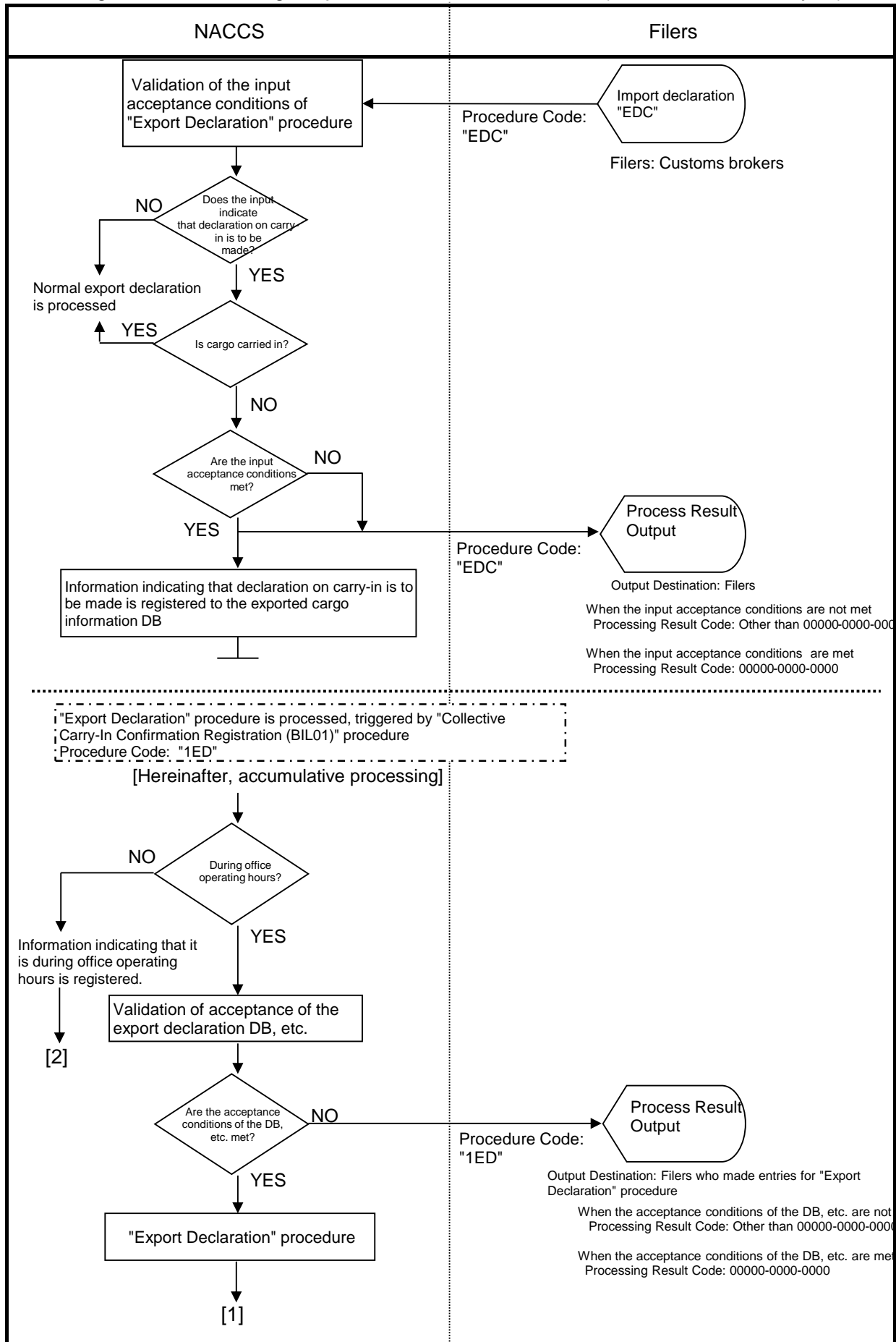


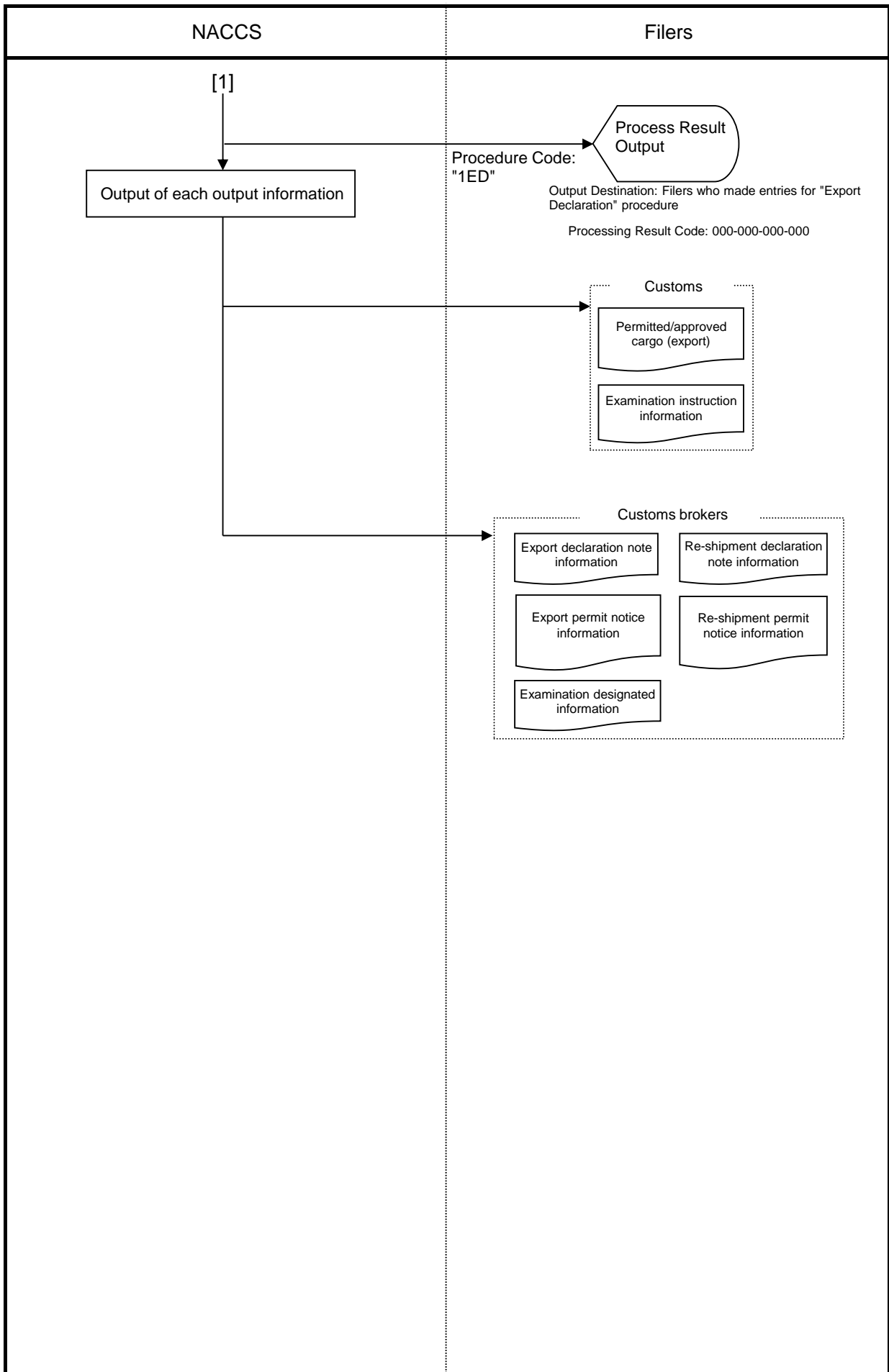
Appendix Table 7-1 Flow of Accumulative Processing - References 1, 2, 3, and 4
(Reference 1/Air)

Flow Diagram of Processing "Loading Flight Assignment Information Registration" Procedure

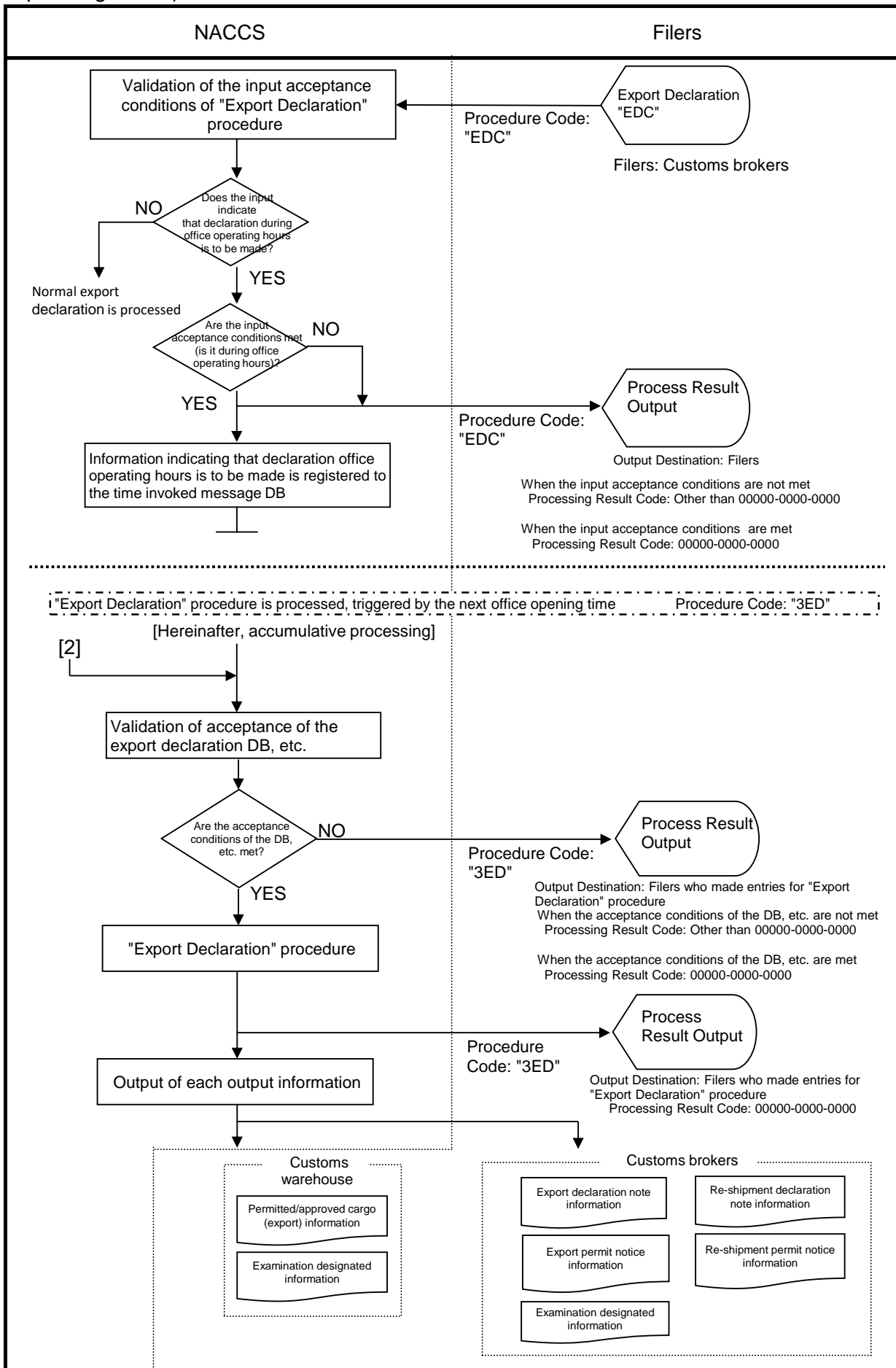


Flow Diagram of Processing "Export Declaration" Procedure (Declaration on Carry-In)





Flow Diagram of Processing "Export Declaration" Procedure (Declaration During Office Operating Hours)



Flow Diagram of Processing "Collective Payment Description Data Related Request Information (for Private Use) Registration/Change" Procedure

