

7.3 Eligibility check

7.3.1 Logon check

NACCS uses User Code, Identifying Number, and User Password issued, managed, and operated by NACCS Center to check the authentication of users and to check whether the user is qualified to perform procedure processing.

The User Password is specified as follows:

- Minimum length of the password must be between 6 and 8 characters.
- The password must contain at least one one-byte alphanumeric character (capital letter).
- The user must not use up to three generations of the passwords by password history management.

The initialization of the password is conducted by either of the following methods.

- If the user have two or more Identifying Numbers for a User Code, the user may conduct it. For details, refer to "User Information Registration (URY)" Procedure Specification.
- In the cases other than above, ask NACCS Center to conduct it.

7.3.2 Mailbox access eligibility check

The e-mail style processing mode checks whether the user has authentication to access e-mail box using mailbox ID and mailbox password issued, managed, and operated by NACCS Center, in addition to above mentioned "7.3.1 Logon Check",

7.3.3 Processing Result Message (for printer) acquiring eligibility check

The interactive processing mode (for packaged software) checks whether the user has authentication to acquire processing result message using logical terminal name issued, managed, and operated by NACCS Center, and terminal access key granted by the system at its discretion, in addition to above mentioned "7.3.1 Logon Check".

7.3.4 Procedure eligibility check

Checks whether the user is qualified to perform procedure. Refer to "Procedure Specification" for details.

7.3.5 Single sign-on for users involved in multiple business types

This system allows procedure in multiple business types with a single logon by checking procedure eligibility.

(Note) Users involved in multiple business types in this system may perform single sign-on in a defined group unit. Refer to Figure 7.3.2 for details.

Figure 7.3.1 shows the image of the procedure when single sign-on is used in this system.

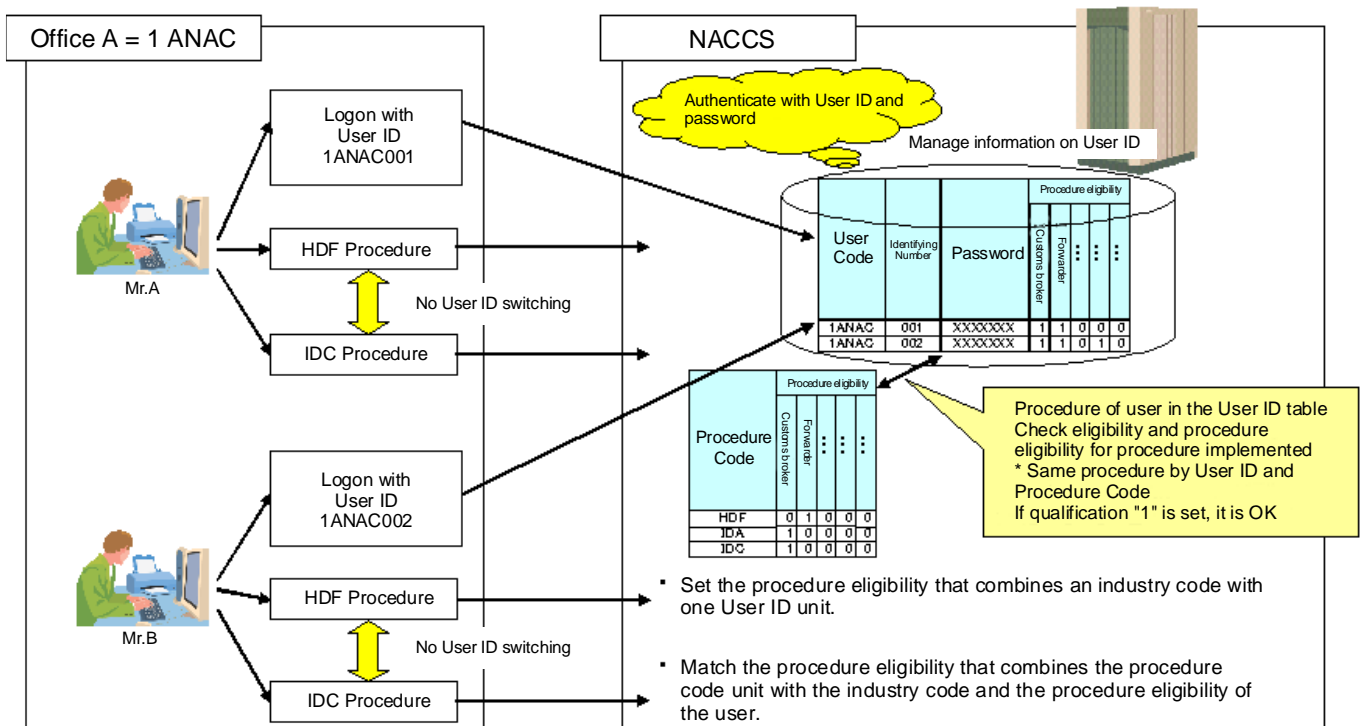


Figure 7.3.1 Image of the procedure of the user involved in multiple business types (When single sign-on is used)

In this system, single sign-on for users involved in multiple business types in the following groups is achieved.

(Example: A user who works in customs broker and forwarder can perform two types of business with a single log-on. However, users who work in customs broker and shipping agent are required to log-on twice because the groups are different.)

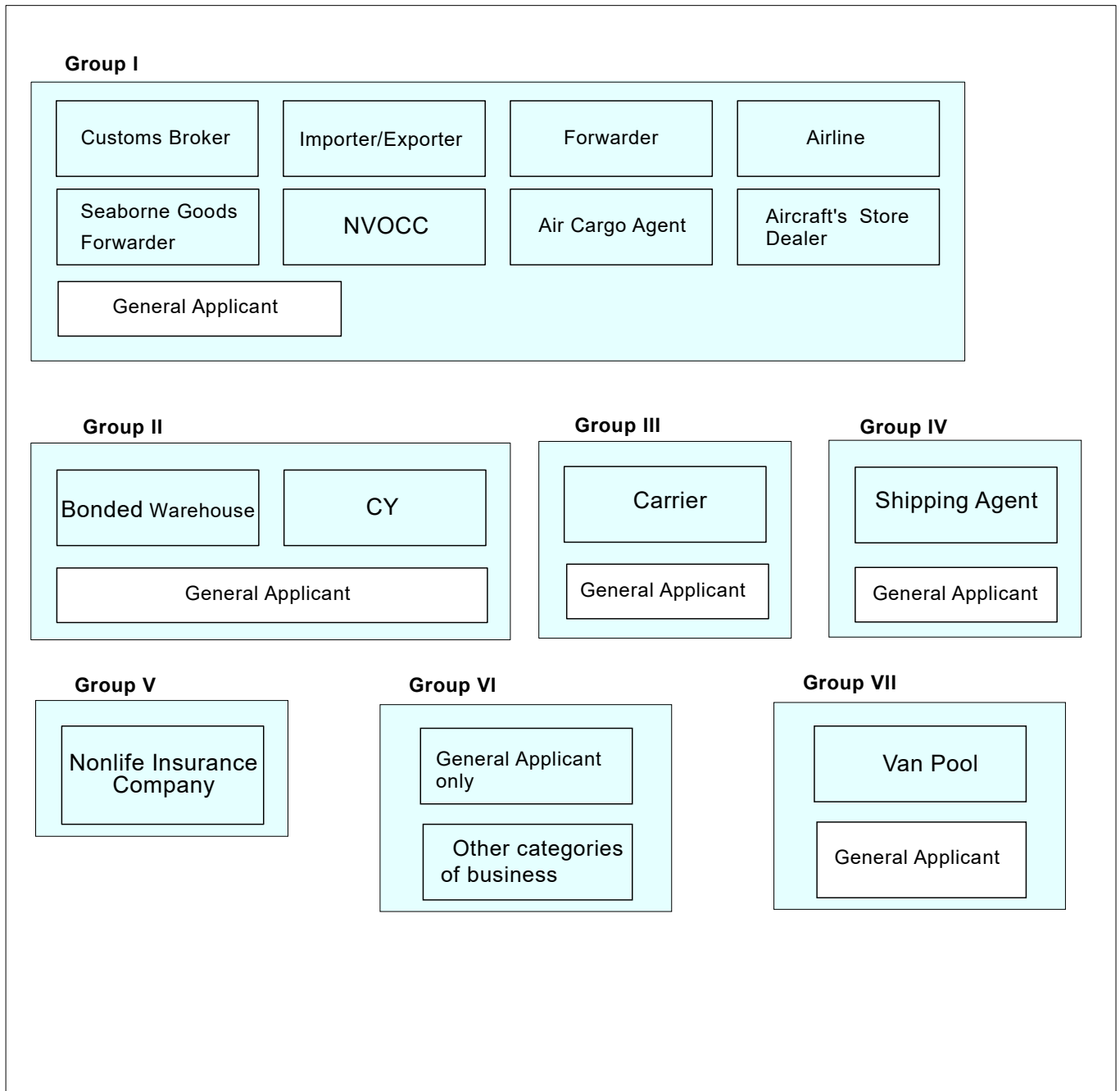


Figure 7.3.2 Diagram of the single sign-on group structure for users involved in multiple business types