

7.2 Network

The following measures are taken to improve reliability of the NACCS user network and ensure security.

- (1) Main facilities in the user network are in duplex configuration.
- (2) Main lines in the user network are duplicated (have multiple routes) to enable rapid switching to alternative routes in case of failure of lines or communication devices.
In addition, the NACCS Center server is connected to the network backbone via dedicated lines and the lines are duplicated.
- (3) The user network is logically closed, and only the data of NACCS users can flow through. In addition, only NACCS users can connect to the access points.
- (4) Each user can only communicate with the NACCS Center server and not with other users. (See Figure 7-2-1)

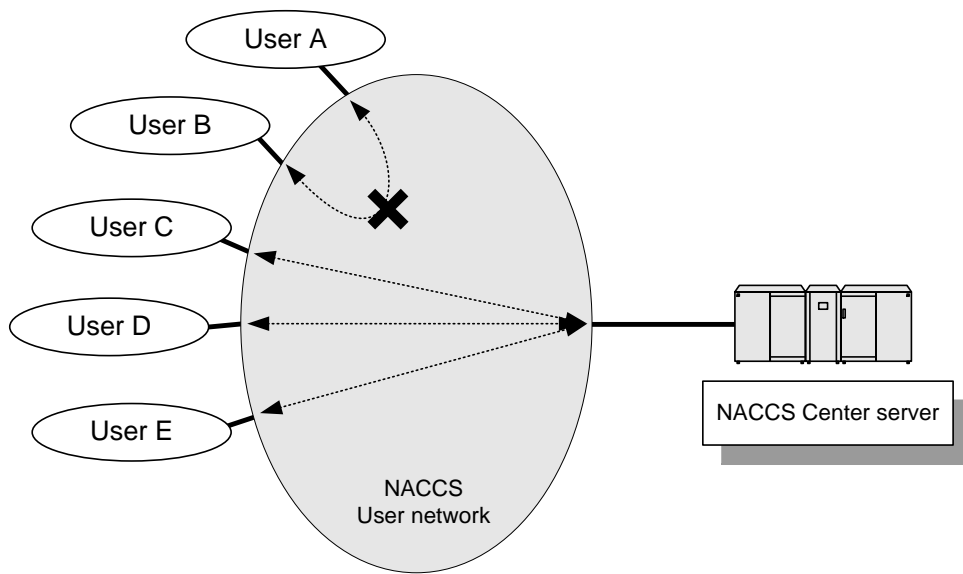


Figure 7-2-1 Image Diagram of Communication between Users and NACCS Center Server

- (5) Users connect to the user network using the router (which support 10BASE-T/100BASE-TX/1000BASE-T) provided by NACCS Center. The operational conditions for the router are set by NACCS Center in an integrated manner, and users cannot change the settings.

Functions (interface) of the router provided to users by NACCS Center are as follows.

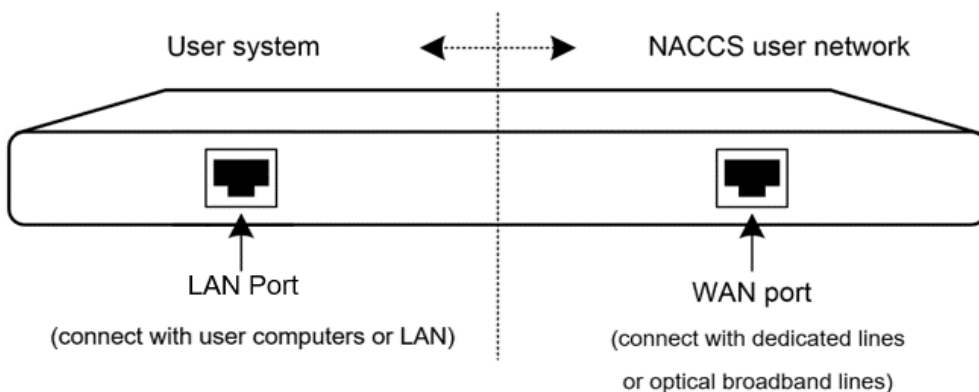


Figure 7-2-2 NACCS Connection Router

- (6) The communicable zone from the NACCS Center server to the NACCS connection router is controlled by NACCS Center, and therefore users cannot make any changes within the zone.

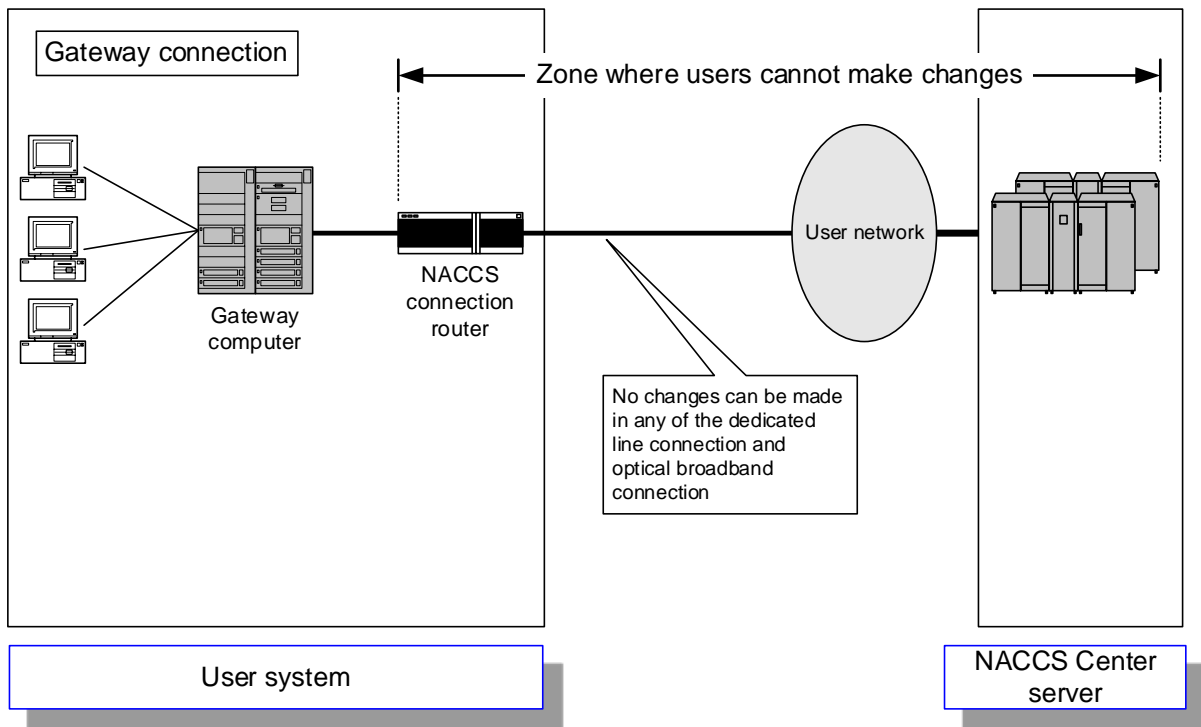


Figure 7-2-3 Zone Where Users Cannot Make Changes

(Note) In the figure above, a case of users using a gateway connection is given as an example. The same applies to cases of users using peer-to-peer connections and connections via a router.