

## 6.2 Procedures for Retrieving Management Document Information (Using the Own System)

### 6.2.1 Communication Specification

As the communication protocol for retrieving management document information in NACCS, TCP/IP is used for the network transport layer and HTTP for the upper layer.

#### 6.2.1.1 Specification for Sending/Receiving HTTP

##### (1) HTTP Request/Response

Table 6-2-1 shows HTTP request methods that can be used when sending to the NACCS Center server in management document information retrieval.

Table 6-2-1 Methods Used for Retrieving Management Document Information

| Item No. | Method | Outline  | Response of the management document information retrieval server in the Center (normal response) |
|----------|--------|--|--|
| 1        | POST   | Make a processing request to the management document information retrieval server in the Center and obtain the results. In this specification, a processing request message of 6.2.1.1 (2) also exists, but in either case a processing request is made using the POST method. | As a normal response, 200 and the processing results are returned.                               |

(Note) The HTTP request method used in this specification is the only Post method.

##### (2) Types of Processing Request Messages

In management document information retrieval, processing request messages shown in Table 6-2-2 exist in the user system and management document information retrieval server in the Center. For each processing request message, a corresponding processing result message exists and is sent to the user system as a response to the HTTP request.

Table 6-2-2 Types of Processing Request Messages

| Item No. | Message type   | Description  |
|----------|--|--|
| 1        | Management document information list request         | Obtain a list of management document information stored in the management document information retrieval server in the Center. |
| 2        | Management document information retrieval request    | Retrieve management document information stored in the management document information retrieval server in the Center.         |
| 3        | Management document information re-retrieval request | Re-retrieve management document information stored in the management document information retrieval server in the Center.      |

## 6.2.1.2 Sequence of Management Document Information Retrieval

### (1) Procedure Sequence

Figure 6-2-1 shows the sequence of retrieving management document information from the user system, and Figure 6-2-2 shows the sequence of re-retrieving management document information.

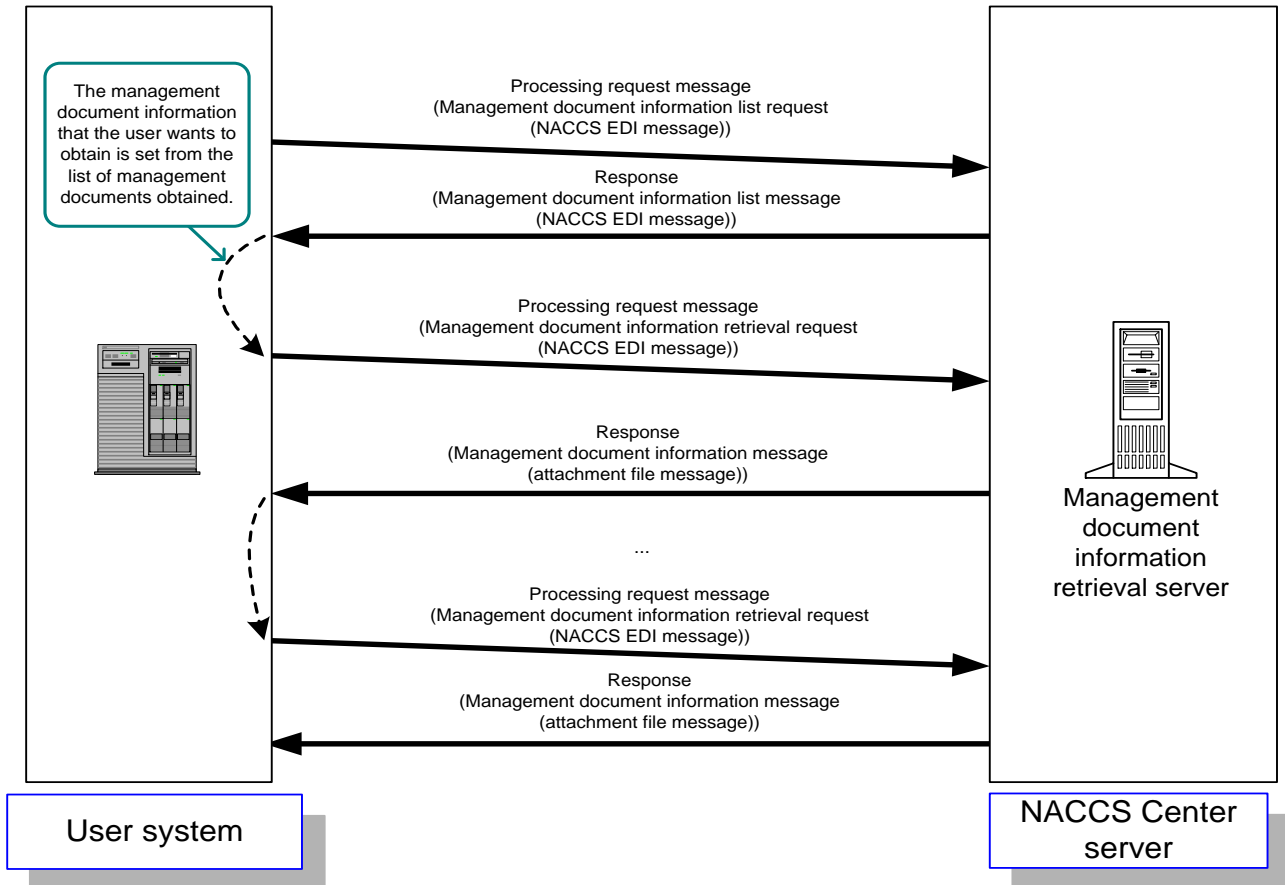


Figure 6-2-1 Sequence of Management Document Information Retrieval

- [1] The user system sends a request message for retrieving a list of management document information to the management document information retrieval server.
- [2] The management document information retrieval server receives a request from the user system and obtains the names and sizes of management document information files.
- [3] The management document information retrieval server returns the results to the user system.
- [4] From the management document list obtained, the user system sets the management document information to retrieve.
- [5] Based on the request from the user system [4], a management document information retrieval request message is sent to the management document information retrieval server.
- [6] The management document information retrieval server obtains the management document information based on the request message.
- [7] The management document information retrieval server sends the management document information obtained to the user system.

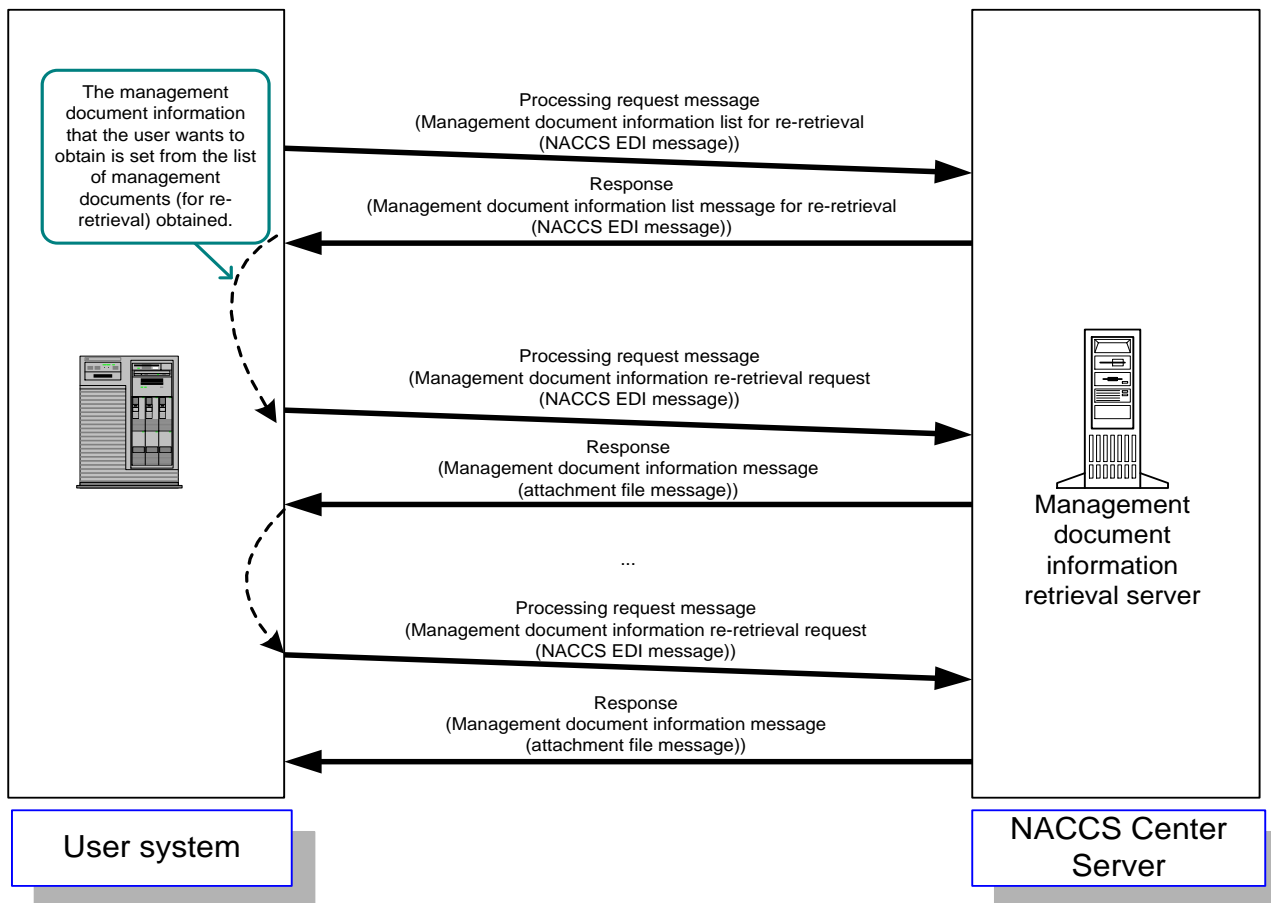


Figure 6-2-2 Sequence of Management Document Information Re-retrieval

- [1] In order to re-retrieve management document information, the user system sends a request message for retrieving a list of management document information for re-retrieval to the management document information retrieval server.
- [2] The management document information retrieval server receives a request for a list from the user system and searches for files.
- [3] The management document information retrieval server returns the search results to the user system.
- [4] From the management document list obtained, the user system sets the management document information to re-retrieve.
- [5] Based on the request from the user system, a management document information re-retrieval request message is sent to the management document information retrieval server.
- [6] The management document information retrieval server obtains the management document information already retrieved based on the request message.
- [7] The management document information retrieval server sends the management document information obtained to the user system.

## (2) Important Notes

### (A) Message format in management document information retrieval procedures

- The message format used in management document information retrieval procedures shall be the attachment file message format.  
See "6.2.2.1 Message Structure (2) Case of Attachment File Messages" for the details of attachment file messages.
- The management document information retrieval procedures and the management document information re-retrieval procedures shall be of different procedure codes.

### (B) File compression format

Management document information is stored in the GZIP compression format in the NACCS Center server and is transmitted as it is. Therefore, the user system must decompress GZIP compressed files.

### (C) Authentication at the time of management document information retrieval

The management document information retrieval server performs user authentication using the user code (5 digits) + Identifying Number (3 digits) and password set in the message (NACCS EDI message) received from the user system. Management document information can only be retrieved using the said user code. In case of authentication error, a message indicating the authentication error is returned to the user system.

### (D) Management document information retrieval function

Management document information can be retrieved by implementing the interface for retrieving management document information designed by NACCS center in the own system and by using HTTP connection.

## 6.2.2 Message Specification

In management document information retrieval, the NACCS EDI message format and the attachment file transmission message format are used.

### 6.2.2.1 Message Structure

Outline of structure of each message format is as follows.

#### (1) Case of NACCS EDI Messages

In management document information retrieval, NACCS EDI message format is used for processing request messages and processing result messages. Figure 6-2-3 shows the outline of NACCS EDI messages.

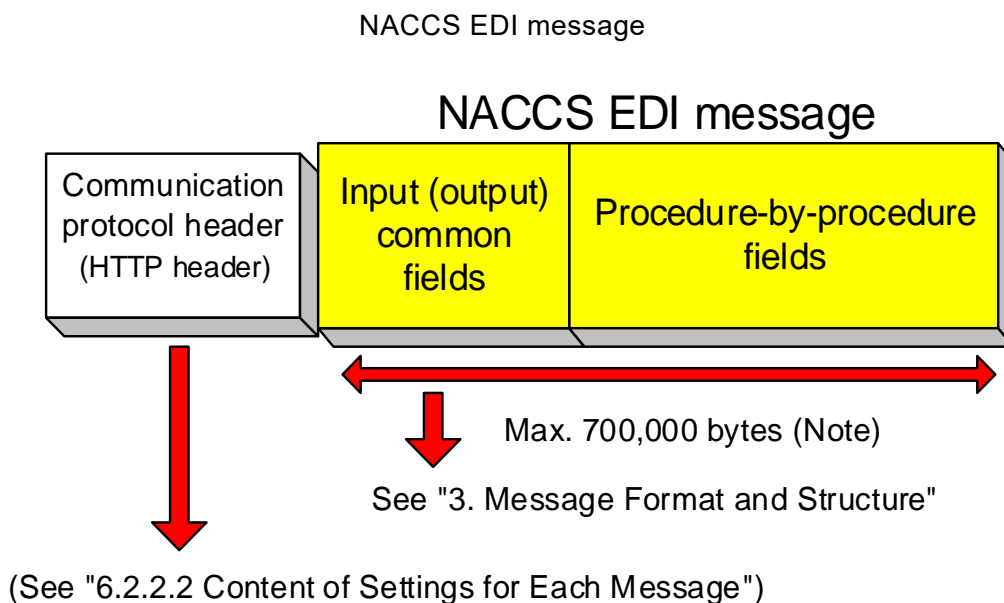


Figure 6-2-3 Outline of NACCS EDI Messages

[1] Processing request messages

Figure 6-2-4 shows the format used when the user system sends processing request messages (management document information list request, management document information retrieval request, management document information re-retrieval request) to the management document information retrieval server in the Center.

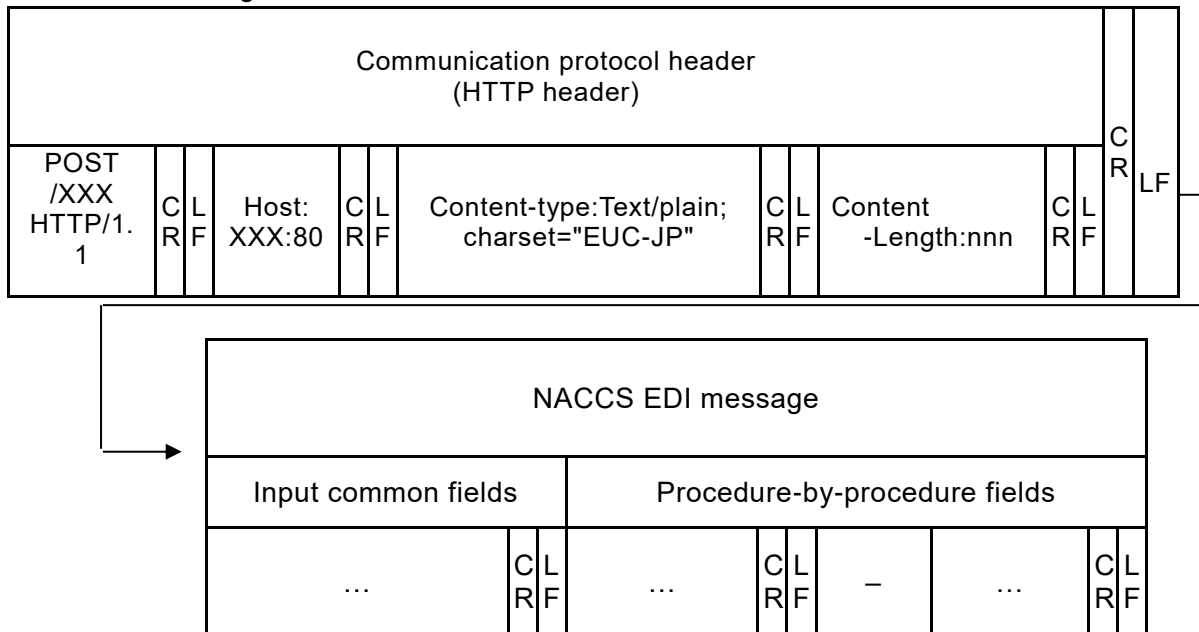


Figure 6-2-4 Message Content

[2] Processing result messages

Figure 6-2-5 shows the format used when the user system returns processing result messages (management document information list message / management document information message (error)) to the management document information retrieval server in the center in response to processing request messages.

See Figure 6-2-6 below for processing result messages that include management document information since management document information is returned to the user system as compressed attachment files.

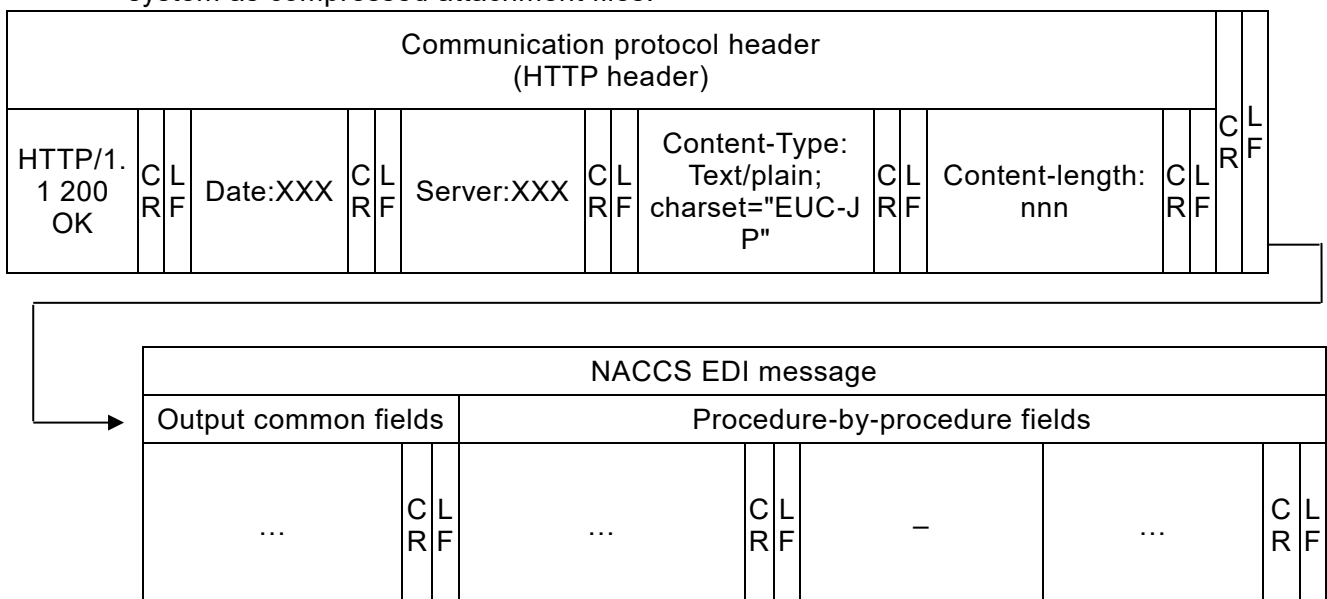
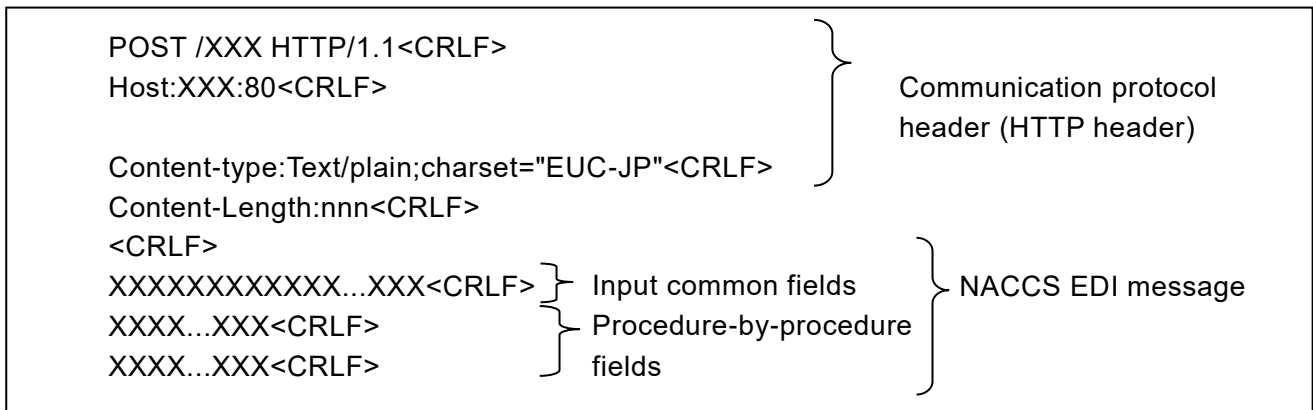


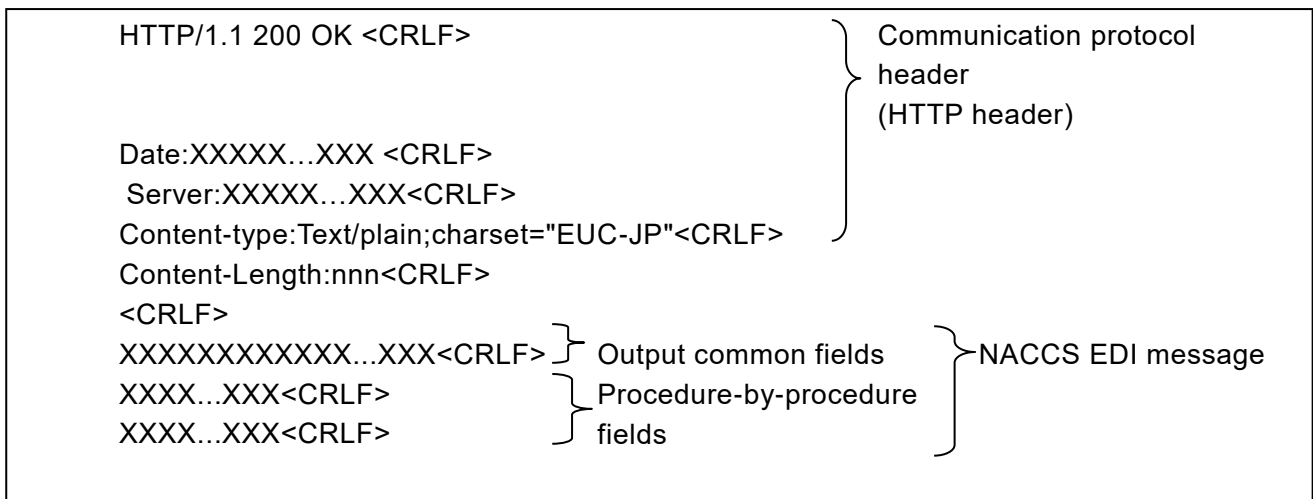
Figure 6-2-5 Message Content

(For reference) When the above message structure is viewed in a text format using text editor, etc., it looks like the following.

### Processing request messages



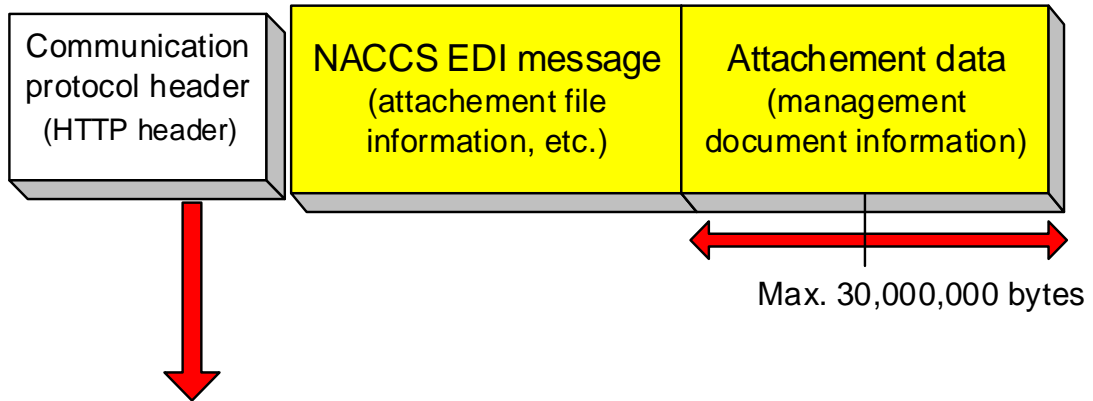
### Processing result message



(Note) "<CRLF>" may be seen differently depending on text editors, etc. used.

## (2) Case of Attachment File Messages

Management document information is returned to the user system as an attachment file transmission message. Figure 6-2-6 shows the outline of attachment file messages.



(See "6.2.2.2 Content of Settings for Each Message")

Figure 6-2-6 Outline of Attachment File Messages

When the management document information retrieval server in the Center sends management document information to the user system, the following format is used. Figure 6-2-7 shows the details.

### [1] Creating method

In NACCS, MIME (Multipurpose Internet Mail Extensions) is used when sending management document information. Management document information is created in attachment file format.

The detailed specification for sending attachment file messages are as follows.

- 1.0 is set for the MIME version.
- Content-Type shall be Multipart/mixed, and Text/plain is set for the NACCS message part and application/octet-stream for the attachment file part.
- BASE64 is set to Content-Transfer-Encoding of the attachment file part.
- "Attachment" is set to Content-Disposition and a file name to "filename".
- A file is composed of one management document information.
- 1 file is used as attachment data for each attachment file transmission message.

### [2] Message image

- An attachment file transmission message is composed of communication protocol header and body.
- NACCS EDI message and the body of attachment file encoded using BASE64 are set after <CRLF> following the HTTP header.



|  |     |    |                  |    |                |    |                            |    |                          |    |  |    |    |    |
|--|-----|----|------------------|----|----------------|----|----------------------------|----|--------------------------|----|--|----|----|----|
| Communication protocol header<br>(HTTP header) |     |    |                  |    |                |    |                            |    |                          |    |  |    |    |    |
| HTTP/1.<br>1                                   | 200 | CL | Date<br>:XX<br>X | CL | Server:<br>XXX | CL | Content<br>-length:<br>nnn | CL | Mime<br>-Version<br>:1.0 | CL | Content-Type:<br>multipart/mixed;<br>boundary="YYYYY<br>Y" | CL | CL | CL |
| OK   |     | RF |                  | RF |                | RF |                            | RF |                          | RF |  | RF | RF | RF |

|            |            |            |    |  |    |   |    |    |    |      |                                 |    |    |    |
|------------|------------|------------|----|--|----|---|----|----|----|------|---------------------------------|----|----|----|
| Body       |            |            |    |  |    |   |    |    |    |      |                                 |    |    |    |
| Text       |            |            |    |  |    |   |    |    |    | Text |                                 |    |    |    |
| · (Hyphen) | · (Hyphen) | YYY<br>YYY | CL | Content-Type:Te<br>xt/plain;<br>charset="EUC-JP<br>" | CL | Content<br>-Transfer<br>-Encoding:<br>8bit (Note) | CL | CL | CL | CL   | See<br>NACCS<br>EDI<br>message. | CL | CL | CL |
|            |            |            | RF |  | RF |   |    |    |    |      |                                 | RF | RF | RF |

|                      |            |            |    |   |    |  |    |    |    |    |   |    |    |    |
|----------------------|------------|------------|----|---|----|--|----|----|----|----|---|----|----|----|
| Body                 |            |            |    |   |    |  |    |    |    |    |   |    |    |    |
| Attachment file part |            |            |    |   |    |  |    |    |    |    |   | CL | CL |    |
| · (Hyphen)           | · (Hyphen) | YYY<br>YYY | CL | Content-Type:applicati<br>on/octet-stream;name=<br>"File name"; | CL | Content-T<br>ransfer<br>-Encoding<br>:BASE64 | CL | CL | CL | CL | Content-Dispo<br>sition:attachme<br>nt;filename="Fi<br>le name" | CL | CL | CL |
|                      |            |            | RF |   | RF |  |    |    |    |    |   | RF | RF | RF |

|                      |  |  |  |            |            |            |            |            |
|----------------------|--|--|--|------------|------------|------------|------------|------------|
| Body                 |  |  |  |            |            |            |            |            |
| Attachment file part |  |  |  | · (Hyphen) | · (Hyphen) | YYY<br>YYY | · (Hyphen) | · (Hyphen) |
| Attachment file body |  |  |  | CL         | CL         |            |            |            |
|                      |  |  |  | RF         | RF         |            |            |            |

(Note) The setting value of this item depends on the e-mail software used. "8bit" is just an example.

Figure 6-2-7 Example of Structure of Attachment File Messages



## 6.2.2.2 Content of Settings for Each Message

The content of settings for each message is as follows.

### (1) Settings for Management document Information List Request Messages

#### [1] HTTP header

Table 6-2-3 shows the content of settings for HTTP header in management document information list request messages.

Table 6-2-3 HTTP Header (Management document Information List Request Message)

| Item No. | Item           | Setting  |
|----------|----------------|--|
| 1        | Request line   | POST /naccs/os HTTP/1.1<CRLF><br>POST shall be set to the request method.<br>HTTP/1.1 shall be set to the HTTP version.<br>If not, an error will result. |
| 2        | HOST           | HOST: <i>IP address</i> 80<CRLF><br>80 shall be set to the port number.<br>If not, an error will result.   |
| 3        | Content-Type   | Content-Type:Text/plain;charset="EUC-JP"<CRLF><br>Fixed.   |
| 4        | Content-length | Content-length:nnn<CRLF><br>The message size of shall be set in place of "nnn".<br>If not, an error will result.   |

[2] Input common fields

Table 6-2-4 shows the content of settings for input common fields in management document information list request messages.

Table 6-2-4 Input Common Fields  
(Management Document Information List Request Message)

| Item No. | Field name          | Length | Settings  |
|----------|---------------------|--------|---|
| 1        | (Reserved area)     | 3      | (Space is set as a fixed value)   |
| 2        | Procedure Code      | 5      | ?LST△ (△ indicates a single-byte space)   |
| 3        | (Reserved area)     | 21     | (Space is set as fixed value)   |
| 4        | User code           | 5      | User code, Identifying Number, and user password are set and used for user identification   |
| 5        | Identifying Numbers | 3      |   |
| 6        | User password       | 8      |   |
| 7        | (Reserved area)     | 319    | (Space is set as a fixed value)   |
| 8        | System identifier   | 1      | (2 is set as a fixed value)   |
| 9        | (Reserved area)     | 27     | (Space is set as fixed value)   |
| 10       | Message length      | 6      | Indicates the length of NACCS EDI message (including input common fields)<br>000409 (Fixed) |

[3] Procedure-by-procedure fields

Table 6-2-5 shows the content of settings for procedure-by-procedure fields in management document information list request messages.

Table 6-2-5 Procedure-By-Procedure Fields  
(Management Document Information List Request Message)

| Item No. | Field name              | length | Settings   |
|----------|-------------------------|--------|--|
| 1        | Output information code | 7      | A space shall be set in case of normal retrieval. The output information code subject to re-retrieval shall be set in case of re-retrieval (Note). |
| 2        | Delimiter               | 2      | <CRLF> shall be set.   |

(Note) Since the volume of the information subject to re-retrieval is assumed to be large, the information subject is extracted by output information code.

Therefore, the output information code shall be set in case of re-retrieval.

## (2) Settings for Management Document Information List Messages

### [1] HTTP header

Table 6-2-6 shows the content of settings for HTTP header in management document information list messages.

Table 6-2-6 HTTP Header (Management Document Information List Message)

| Item No. | Item           | Settings  |
|----------|----------------|---|
| 1        | Status line    | HTTP/1.1 200 OK<CRLF><br>HTTP/1.1 shall be set to the HTTP version.   |
| 2        | Date           | The date and time when the message is generated shall be set. ((day of the week), dd MMM YYYY HH:mm:ss GMT format (Example: Thu, 28 May 2018 23:59:45 GMT)) |
| 3        | Server         | The information of the transmitting server shall be set.  |
| 4        | Content-Type   | Content-Type:Text/plain;charset="EUC-JP"<CRLF> is Fixed.  |
| 5        | Content-length | Content-length:nnn<CRLF><br>The message size of transmission message shall be set in place of "nnn".  |

[2] Output common fields

Table 6-2-7 shows the content of settings for output common fields in management document information list messages.

Table 6-2-7 Output Common Fields (Management Document Information List Message)

| Item No. | Field name                         |                          | Length | Settings   |
|----------|------------------------------------|--------------------------|--------|--|
| 1        | (Reserved area)                    |                          | 3      | (Note 1)   |
| 2        | Procedure Code                     |                          | 5      | The same procedure code as that for processing request messages shall be set (?LST△ (△ indicates a single-byte space))   |
| 3        | Output information code            |                          | 7      | Normal case: CAQ0160<br>Procedure error case: *C?LST△<br>Common error case: *CCMSG△<br>(△ indicates a single-byte space) |
| 4        | Date of Message Receipt            |                          | 14     | The message reception date and time shall be set (yyyymmddhhmm△△)  |
| 5        | User code                          |                          | 5      | The user code of the user who receives the message shall be set  |
| 6        | (Reserved area)                    |                          | 211    | (Note 1)   |
| 7        | Message control information        | Division sequence number | 3      | Normal case: 001<br>Error case: 000  |
| 8        |                                    | Termination              | 1      | E (Fixed)  |
| 9        |                                    | Message type             | 1      | Normal case: M<br>Error case: R  |
| 10       |                                    | (Reserved area)          | 3      | (Note 1)   |
| 11       | (Reserved area)                    |                          | 110    | (Note 1)   |
| 12       | Message destination control format |                          | 1      | Q (Fixed)  |
| 13       | (Reserved area)                    |                          | 28     | (Note 1)   |
| 14       | Message length                     |                          | 6      | Indicates the NACCS EDI message length 000400–700000 (The maximum message length is 700,000)                             |

(Note 1) The reserved area is used for the system control.

[3] Procedure-by-procedure fields

Table 6-2-8 shows the content of settings for procedure-by-procedure fields in management document information list messages (normal case).

Table 6-2-8 Procedure-By-Procedure Fields  
(Management Document Information List Message)

| Item No. | Field name                                | Length                                  | Settings   |   |
|----------|---|---|--|---|
| 1        | Processing result code                    | 75                                      | 00000-0000-0000△-△<br>(The processing result code shall be set to the leading 15 digits and spaces to the following 60 digits) |   |
| 2        | Delimiter                                 | 2                                       | <CRLF>   |   |
| 3        | Management document file name<br>(Note 1) | Output information code (Note 2)        | 7  | The output information code indicating the management document information shall be set.                                      |
| 4        |   | Target date                             | 6  | The date of data subject to editing shall be set (yymmdd format)  |
| 5        |   | Delimiter                               | 1  | _ (Underscore)  |
| 6        |   | Destination user code                   | 5  | The destination user shall be set   |
| 7        |   | Delimiter (Note 4)                      | 1  | _ (Underscore)  |
| 8        |   | Subject (Note 3)                        | Max. 64  | The importer/exporter code, etc. shall be set   |
| 9        |   | Delimiter (Note 4)                      | 1  | _ (Underscore)  |
| 10       |   | Copy source user code (Note 5) (Note 6) | 5  | The user code for the copy source shall be set  |
| 11       |   | Delimiter                               | 1  | _ (Underscore)  |
| 12       |   | Creation date and time                  | 14   | The system date and time when the transmission file is edited in the NACCS Center server shall be set (yyyymmddhhmmss format) |
| 13       |   | Extension                               | 4  | .csv or .edi shall be set   |
| 14       | Extension                                 | 3                                       | .gz shall be set   |   |
| 15       | (Reserved area)                           | 16                                      |  |   |
| 16       | Delimiter (Note 1)                        | 2                                       | <CRLF>   |   |
| 17       | Size (Note 1)                             | 8                                       | File size (Unit: byte)   |   |
| 18       | Delimiter (Note 1)                        | 2                                       | <CRLF>   |   |

(Note 1) When there are multiple management document files, item no. 3 to 18 are repeated. item no.3 to 14 are variable length.

(Note 2) When packaged software is used to retrieve management document information, the packaged software converts the output information code into

Procedure Specification number + management document information name (Japanese), and therefore the following naming scheme is used.

Procedure Specification number + Management document information name (Japanese) + Target date + \_  
+ Destination user code + \_ + Division sequence number + \_ + Importer/exporter code, etc. + \_ + Copy source user code, etc. + \_ + Creation date and time.csv

(Example of file name of management document information converted by packaged software)

199 Management document information retrieval data181100\_3ANTT\_001\_ABCDE0000000\_1ANTT\_20181208091024.csv

- (Note 3) This field is used when the same management document information is output a single destination by splitting it into multiple files and for reports created on as-needed basis.
- (Note 4) "\_"s (underscores) in front of and following the field 8 "Subject" are output with the "Subject" and are not output when "Subject" is not output.
- (Note 5) This field is used only when the management document information transmitted to a user is to be transmitted to another user. When "\_Subject\_" is included in the management document information of copy source user code, its content is output in front of this field.
- (Note 6) When the field 8 "Subject" is output and the copy source user code is not output, 2 underscores may be output side-by-side.



Table 6-2-9 shows the content of settings for procedure-by-procedure fields in management document information list messages (error case).

Table 6-2-9 Procedure-By-Procedure Fields  
(Management Document Information List Message)

| Item No. | Field name             | Length | Settings   |
|----------|------------------------|--------|--|
| 1        | Processing result code | 75     | Processing result code indicating the error (15-digit processing result code is repeated at most 5 times.) |
| 2        | Delimiter              | 2      | <CRLF>   |

(3) Settings for Management Document Information Retrieval Request Message/Management document Information Re-Retrieval Request Messages

[1] HTTP header

Settings are the same as that for management document information list request messages. (Table 6-2-3)

[2] Input common fields

Table 6-2-10 shows the content of settings for input common fields in management document information retrieval request messages/management document information re-retrieval request messages.

Table 6-2-10 Input Common Fields (Management Document Information Retrieval Request Message/Management Document Information Re-Retrieval Request Message)

| Item No. | Field name          | Length | Settings  |
|----------|---------------------|--------|---|
| 1        | (Reserved area)     | 3      | (Space is set as fixed value)   |
| 2        | Procedure Code      | 5      | Management document information retrieval request message<br>: ?GTN△ (△ indicates a single-byte space)<br>Management document information re-retrieval request message<br>: ?GTP△ (△ indicates a single-byte space) |
| 3        | (Reserved area)     | 21     | (Space is set as fixed value)   |
| 4        | User code           | 5      | User code, Identifying Number, and user password are set and used for user identification   |
| 5        | Identifying Numbers | 3      |   |
| 6        | User password       | 8      |   |
| 7        | (Reserved area)     | 319    | (Space is set as a fixed value)   |
| 8        | System identifier   | 1      | (2 is set as a fixed value)   |
| 9        | (Reserved area)     | 27     | (Space is set as fixed value)   |
| 10       | Message length      | 6      | Indicates the length of NACCS EDI message (including input common fields)<br>000530 (Fixed)   |

[3] Procedure-by-procedure fields

Table 6-2-11 shows the content of settings for procedure-by-procedure fields in management document information retrieval request messages/management document information re-retrieval request messages.

Table 6-2-11 Procedure-By-Procedure Fields  
(Management Document Information Retrieval Request Message/Management Document Information Re-Retrieval Request Message)

| Item No. | Field name | Length | Settings  |
|----------|------------|--------|---|
| 1        | File name  | 128    | The file name of the management document information file to be retrieved shall be set. At most 128 bytes in accordance with the field "Document information file name" in management document information list messages. |
| 2        | Delimiter  | 2      | <CRLF>  |

#### (4) Settings for Management Document Information Messages

##### [1] HTTP header

Table 6-2-12 shows the content of settings for HTTP header in management document information messages.

Table 6-2-12 HTTP Header (Management Document Information Message)

| Item No. | Item           | Settings  |
|----------|----------------|---|
| 1        | Status line    | HTTP/1.1 200 OK<CRLF><br>HTTP/1.1 shall be set to the HTTP version.<br>In case of normal response, 200 shall be set to the status code.                       |
| 2        | Date           | The date and time of the message generation shall be set. ((day of the week), dd MMM YYYY HH:mm:ss GMT format (Example: Thu, 28 May 2015 23:59:45 GMT))       |
| 3        | Server         | The information of the transmitting server shall be set.  |
| 4        | MIME-version   | In NACCS, "1.0" shall be set.   |
| 5        | Content-Type   | In normal case, multipart/mixed;boundary = "Arbitrary value" shall be set.<br>In case of error, "Content-Type:Text/plain; charset=EUC-JP<CRLF>" shall be set. |
| 6        | Content-length | Content-length:nnn<CRLF><br>The message size of shall be set in place of "nnn".   |

[2] Output common fields

Table 6-2-13 shows the content of settings for output common fields in management document information messages.

Table 6-2-13 Output Common Fields (Management Document Information Message)

| Item No. | Field name                         |                          | Length | Settings   |
|----------|------------------------------------|--------------------------|--------|--|
| 1        | (Reserved area)                    |                          | 3      | (Note 1)   |
| 2        | Procedure Code                     |                          | 5      | The same procedure code as that for processing request messages shall be set.  |
| 3        | Output information code            |                          | 7      | <ul style="list-style-type: none"> <li>• Normal response or procedure error response of management document information retrieval request messages: *C?GTN△</li> <li>• Common error response of management document information retrieval request messages: *CCMSG△</li> <li>• Normal response or procedure error response of management document information re-retrieval request messages: *C?GTP△</li> <li>• Common error response of management document information re-retrieval request messages: *CCMSG△</li> </ul> (△ indicates a single-byte space) |
| 4        | Date of Message Receipt            |                          | 14     | The message reception date and time shall be set<br>(yyymmddhhmm△△)  |
| 5        | User code                          |                          | 5      | The user code of the user that receives the message shall be set   |
| 6        | (Reserved area)                    |                          | 211    | (Note 1)   |
| 7        | Message control information        | Division sequence number | 3      | 000–999<br>The serial number shall be set according to the number of divisions of the management document.<br>If the document is not divided, 000 shall be set.  |
| 8        |                                    | Termination              | 1      | "E" shall be set for the last message.<br>A single-byte space shall be set otherwise.  |
| 9        |                                    | Message type             | 1      | R (Fixed)  |
| 10       |                                    | (Reserved area)          | 3      | (Note 1)   |
| 11       | (Reserved area)                    |                          | 110    | The information set for the processing request message shall be output as it is.   |
| 12       | Message destination control format |                          | 1      | Q (Fixed)  |
| 13       | (Reserved area)                    |                          | 28     | (Note 1)   |
| 14       | Message length                     |                          | 6      | Indicates the NACCS EDI message length<br>000477 (Fixed)   |

(Note 1) The reserved area is used for the system control.

[3] Procedure-by-procedure fields

Table 6-2-14 shows the content of settings for procedure-by-procedure in management document information messages.

Table 6-2-14 Procedure-By-Procedure Fields (Management Document Information Message)

| Item No. | Field name             | Length | Settings   |
|----------|------------------------|--------|--|
| 1        | Processing result code | 75     | Normal case: 00000-0000-0000<br><br>(The processing result code shall be set to the leading 15 digits and spaces to the following 60 digits)<br><br>Error case: Processing result code indicating the error<br><br>(15-digit processing result code is repeated at most 5 times) |
| 2        | Delimiter              | 2      | <CRLF>   |

[4] Attachment File

Normal case: Management document information encoded using BASE64 shall be attached.

Error case: No attachment file exists.

### 6.2.2.3 Naming Scheme of Management Document Information Files

The file name of CSV format private management document information is described as follows.

(1) File Name of CSV Format Management Document Information

*Output information code* ([1]) + *Target date* ([2]) + *\_* +

*Destination user code* ([3]) + *\_* + *Division sequence number* ([4]) + *\_* +  
*Importer/exporter code, etc.* ([5])

+ *\_* + *Copy source user code, etc.* ([6]) + *\_* + *Creation date and time* ([7]).csv

(2) File Name of Management Document Information Retrieved by Packaged Software

(After the retrieval, packaged software converts the file name and then stores it)

*Procedure Specification number* + *Management document information name*  
*(Japanese)* ([1']) + *Target date* ([2]) + *\_* +

*Destination user code* ([3]) + *\_* + *Division sequence number* ([4]) + *\_* +  
*Importer/exporter code, etc.* ([5])

+ *\_* + *Copy source user code, etc.* ([6]) + *\_* + *Creation date and time* ([7]).csv

[1]: Indicates the output information code of the management document information.

[1']: Indicates the document number of Procedure Specification, which describes the specification of management document information, and Japanese name of the management document information.

[2]: Indicates the date of the data subject to editing.

YYMMDD model (YY indicates the lower 2 digits of the year).

\* YYMM00 is used for monthly reports, and YY0000 for annual reports.

[3]: Indicates the destination user.

[4]: Indicates the serial number when output is divided. "*Serial number* + E" shall be output for the last file.

[5]: Indicates the importer/exporter code, etc. (Optional output)

\* This field is used when the same management document information is output a single destination by splitting it into multiple files. In addition, for management document information for which reports are created on as-needed basis, "ZUIJI\_*Serial No. of Receipt*", "ZUIJI\_*Serial No. of Receipt\_Serial number*", or "ZUIJI\_*Importer/exporter code, etc. Serial No. of Receipt\_Serial number*" is added. The content of output shall be set according to each output. See the "Procedure Specification" for management documents that are output as multiple files and the unit of output. See "Appendix Table 6-9-2 List of Private Management document Information" for management document information for which reports are created on as-needed basis.

[6]: Indicates the copy source user code. (Optional output)

\* This field is used when the management document information transmitted to a user is to be transmitted to another user. When "*\_Importer/exporter code, etc.\_*" is included in the file name of copy source management document information, "*\_Importer/exporter code, etc.\_*" is output in front of this field.

Management documents transmitted to other users are those specified in the Procedure Specification or those set by NACCS Center according to the requests from the users.

\* When the importer/exporter code, etc. ([5]) is output and this field ([6]) is not output, 2 underscores may be output side-by-side. (See below (Example 3))

[7] Indicates the system date and time when the transmission file is edited in the NACCS Center server.

(Note) "*\_*" (underscore) in front of the item [4] is output with the item [4] and is not output when the item [4] is not output.

(Note) "*\_*"s (underscores) in front of and following the item [5] are output with the item [6] and are not output when the item [5] is not output.

Examples of the file name of CSV format private management document information retrieved by the own system are described as follows.

(Example 1) Case of normal daily transmission management document information

(Management document information edited on December 9, 2018 at 04:50:12 to be transmitted to 1ANAC

(Daily report) (Data is of December 8))

AAA9990181208\_1ANAC\_20181209045012.csv

└Output information code

(Example 2) Case of transmitting the management document information of the user of (Example 1) also to 3ANAC

AAA9990181208\_3ANAC1ANAC\_20181209045012.csv

(Example 3) Case of monthly transmission management document information for which importer/exporter code, etc. is set for the file name

(Management document information edited on Saturday, December 08, 2018 at 09:10:24 to be transmitted to 1ANAC

(Monthly report) (Data is of November))

AAA9990181100\_1ANAC\_ABCDEFGHIJKL\_\_20181208091024.csv

: Management document information of the importer ABCDEFGHIJKL

AAA9990181100\_1ANAC\_MNOPQRSTUVWXYZ\_\_20181208091024.csv

: Management document information of the importer MNOPQRSTUVWXYZ

(Example 4) Case of transmitting the management document information of the user of (Example 3) also to 3ANAC

AAA9990181100\_3ANAC\_ABCDEFGHIJKL\_1ANAC\_20181208091024.csv

: Management document information of the importer ABCDEFGHIJKL

AAA9990181100\_3ANAC\_MNOPQRSTUVWXYZ\_1ANAC\_20181208091024.csv

: Management document information of the importer MNOPQRSTUVWXYZ

(Example 5) Case of transmitting the management document information of the user of (Example 1) by dividing it into 3 files

AAA9990181208\_1ANAC\_001\_20181209045012.csv

AAA9990181208\_1ANAC\_002\_20181209045012.csv

AAA9990181208\_1ANAC\_003E\_20181209045012.csv

### 6.2.3 Handling Errors

(1) Errors due to the Settings for HTTP Header

Table 6-2-15 shows handling errors occurred at the time of HTTP request.

Table 6-2-15 Handling Errors at the Time of HTTP Request

| Item No. | Method | Assumed errors and handling them  |
|----------|--------|---|
| 1        | POST   | <p>HTTP request is made, but no response is returned from the management document information retrieval server in the Center.</p> <p>&lt;Causes and handling&gt;</p> <ul style="list-style-type: none"> <li>• The destination port number is incorrect               <ul style="list-style-type: none"> <li>→ Confirm that a connection to the port number 80 is requested.</li> </ul> </li> <li>• The NACCS Center server is under maintenance.               <ul style="list-style-type: none"> <li>→ Check the information on the maintenance of the NACCS Center server disclosed on the NACCS Information. If it is under maintenance, try re-connecting after the completion of the maintenance.</li> </ul> </li> <li>• The NACCS Center server and/or network is in failure.               <ul style="list-style-type: none"> <li>→ Try re-connecting after some time. If it is not recovered for a long time, request for investigation to the help desk in NACCS Center. The failure information is also disclosed on the NACCS Information.</li> </ul> </li> </ul> <p>Since the information on the maintenance and failure of the server for testing connection is not disclosed on the NACCS Information however, consult NACCS Center for the status of the NACCS Center server when a connection to the server fails for a long time during the hours when connection tests can be performed.</p> <hr/> <p>An error response (other than the normal response (200)) is returned.</p> <p>&lt;Causes and handling&gt;</p> <p>[1] The destination URL is incorrect. (403 or 404)</p> <ul style="list-style-type: none"> <li>→ Confirm that the URL notified by NACCS Center is specified.</li> </ul> <p>[2] The HTTP header is incorrect. (400)</p> <ul style="list-style-type: none"> <li>→ Create the correct HTTP header and retry.</li> </ul> |



## 6.2.4 Others

### (1) Limits

When performing management document information retrieval in the user system, the following must be met.

- [1] Management document information retrieval in the user system is available only when leased connection or optical broadband connection is used for the access line.
- [2] Due to the restrictions on the capacity of the management document information retrieval server, the information must promptly be retrieved on (or after) the transmission date and time in the user system.
- [3] In order to avoid delay in response associated with the concentration of retrieval requests from some users, users of the own system must meet the following conditions.
  - Retrieval requests from the same own system shall not be made by multiple users at the same time.
  - Retrieval requests for multiple reports shall not be made by the same user at the same time.

### (2) Other notes

Users of management document information retrieval (in the own system) need to pay attention to the following.

- [1] Under heavy load of the system, operational restrictions such as not accepting messages from all users may be enforced. In this case, NACCS Center will notify users via telephone, FAX, or the NACCS Information, etc.
- [2] The environment for conducting a connection test shall be set up within the premises of a backup site. Therefore, in the event that the primary site is affected by a large-scale failure or a large-scale disaster, etc., normal operation will be implemented at the backup site and a connection test at the backup site may be unavailable.

## 6.2.5 Values of Various Timers

Table 6-2-16 shows the timer values specified for management document information retrieval (in the own system). In addition, Figure 6-2-8 shows the location of setting each timer.

Table 6-2-16 Timer Values

| ID  | Monitoring content   | Timer value           |
|-----|--|-----------------------|
| T01 | HTTP connection between the user terminal and the management document information retrieval server in the Center when transmitting from the user side. | Specified by the user |

(Note) T01 in the ID column of Table 6-2-16 indicates the ID of the timer shown in Figure 6-2-8.

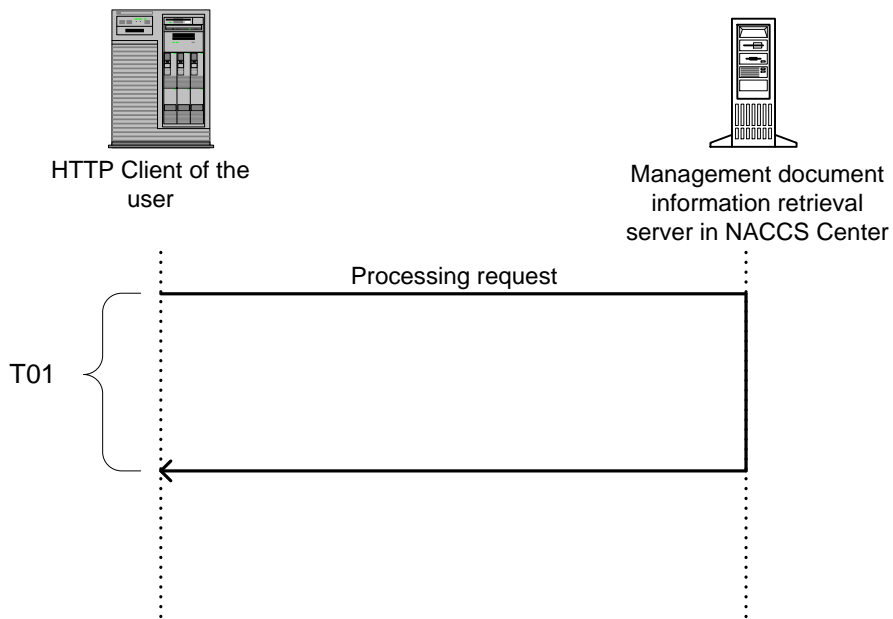


Figure 6-2-8 Timer Setting during Normal Connection